

EDEDECOR

MARCH 2020

THE NEW NATURALS

**SOPHIA BUSH BUILDS
HER HOLLYWOOD
DREAM HOME**

**RESERVATIONS, PLEASE!
OUR NEW CAFE OPENS
AT THE PLAZA**

**38 TOP TILE
TRANSFORMATIONS**



Actress Sophia Bush
in her L.A. garden

آموزشگاه انعکاس منبع جدیدترین اطلاعات، مقالات و دوره‌های آموزشی دکوراسیون داخلی

 Enekas.Academy

 Enekas.Academy



Objects for Interior life







TIFFANY & Co.

Elsa Peretti

آموزشگاه انعکاس منبع جدیدترین اطلاعات، مقالات و دوره‌های آموزشی دکوراسیون داخلی





ANATRA BY PATRICIA URQUIOLA



آموزشگاه انعکاس منبع جدیدترین اطلاعات ، مقالات و دوره‌های آموزشی دکوراسیون داخلی

 Enekas.Academy

 Enekas.Academy



JANUS et Cie®



THE DEFINITIVE SOURCE FOR SITE, GARDEN & CASUAL FURNISHINGS

JANUSETCIE.COM

آموزشگاه انعکاس منبع جدیدترین اطلاعات ، مقالات و دوره‌های آموزشی دکوراسیون داخلی

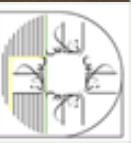
 Enekas.Academy

 Enekas.Academy





آموزشگاه انعکاس منبع جدیدترین اطلاعات ، مقالات و دوره‌های آموزشی دکوراسیون داخلی





ROLEX AND CINEMA

Rolex is committed to the transmission of knowledge across generations. Through our partnership with the Academy of Motion Picture Arts and Sciences, we are proud to perpetuate the art of cinema, sharing the experience and expertise that will inspire the filmmakers of tomorrow. Along with Oscar®-winning directors James Cameron, Martin Scorsese, Kathryn Bigelow and Alejandro G. Iñárritu, Rolex believes in the mentorship of future filmmakers, who will preserve cinema's greatest traditions and move the art form forward.

Discover more on rolex.org

#Perpetual



آموزشگاه انعکاس منبع جدیدترین اطلاعات، مقالات و دوره‌های آموزشی دکوراسیون داخلی

 Eneka.Academy

 Eneka.Academy





CAMÉLIA NECKLACE IN 18K WHITE GOLD*, RUBY AND DIAMONDS
CAMÉLIA RING IN 18K WHITE GOLD* AND DIAMONDS

CHANEL

HIGH JEWELRY





CALL 800.550.0005 OR VISIT CHANEL.COM TO FIND AT YOUR NEAREST BOUTIQUE. ©2020 CHANEL® Inc. White gold with a thin layer of Rhodium plating for

آموزشگاه انعکاس منبع جدیدترین اطلاعات ، مقالات و دوره‌های آموزشی دکوراسیون داخلی

 Enekas.Academy

 Enekas.Academy





Beautifully superior.

Designed by nature. Perfected through innovation.

Learn more at caesarstoneus.com



آموزشگاه انعکاس منبع جدیدترین اطلاعات، مقالات و دوره‌های آموزشی دکوراسیون داخلی



Enekas.Academy



Enekas.Academy



5810 Black Tempal - NEW



آموزشگاه انعکاس منبع جدیدترین اطلاعات ، مقالات و دوره‌های آموزشی دکوراسیون داخلی

 Eneka.Academy

 Eneka.Academy





BEN SOLEIMANI

Less is more.

Visit our first flagship showroom
8626 Melrose Ave, Los Angeles, CA 90069
bensoleimani.com

R: Douglas Friedman L: Photograph by Noé Gonzalez
L: Pierce Sofa, Ives Coffee Table, Andra Rug, Esme Lamp, Parker Lounge Chair, Basketweave Pillow Cover, Clarion Ottoman,
Hawthorn Nesting Table, Alma Candle, Aurora Vase, Ribbed Cashmere Throw, Marin Leather Box, Montana Bowl.



آموزشگاه انعکاس منبع جدیدترین اطلاعات، مقالات و دوره‌های آموزشی دکوراسیون داخلی

 Enekas.Academy

 Enekas.Academy





MARCH 2020

CONTENTS



The living room of
Marisa Berenson's riad in
Marrakech, page 96.

JONATHAN BECKER

آموزشگاه انعکاس منبع جدیدترین اطلاعات، مقالات و دوره‌های آموزشی دکوراسیون داخلی

 Enekas.Academy

 Enekas.Academy






THE LURE OF THE FINISH.
CHOOSE FROM A SEA OF FAUCET FINISHES—INCLUDING VIBRANT® OMBRÉ—
AND DESIGN YOUR SPACE AROUND WHAT CAPTIVATES YOU.

THE BOLD LOOK
OF **KOHLER**®

آموزشگاه انعکاس منبع جدیدترین اطلاعات ، مقالات و دوره‌های آموزشی دکوراسیون داخلی





Van Cleef & Arpels

Haute Joaillerie, place Vendôme since 1906





Frivole collection
Between the Finger Ring,
yellow gold and diamonds.



CONTENTS

26 EDITOR'S LETTER

31 POV

A peek inside the ELLE DECOR café at the Plaza Hotel; Tiffany & Co. launches a men's collection; this month's must-see exhibitions; and more

36 WHAT'S HOT

The best design discoveries

42 TALENT

Fashion designer Duro Olowu debuts a line of home fabrics with Soane Britain.

BY JESSICA BUMPUS

44 SHOP TALK

Artist Yuttana "Tee" Abkornburee hand-paints glassware at London's Thomas Goode & Co.

BY MICHELLE ZIFF

46 TRUTH IN DECORATING

Four interior design experts reflect on vanities

ED STYLE

50 SHOWCASE

A collection of timepieces with intricate mosaic dials from Harry Winston

52 MOOD BOARD

From high-fashion ski apparel to mountain home furnishings, everything you need on the slopes and in the cabin

58 SHORTLIST

Rose Tarlow and eight things she can't live without

ED BUILDER

61 TOOLBOX

Bold tiles are shaking up



Fairfax Dorn and Marc Glimcher in the den of their Sagaponack, New York, home, page 88.

kitchens, bathrooms, and stairwells alike.

BY TIM MCKEOUGH

ED LIVING

67 DANIEL'S KITCHENS

Chef Boulud prepares a classic pan of paella.

BY DANIEL BOULUD

70 ZODIAC TABLESCAPE

Hermès's new dinnerware collection is lush with botanical motifs

FEATURES

72 ONE TREE HILLS

Actress and activist Sophia Bush renovates a midcentury home in the Hollywood Hills.

BY CHARLES CURKIN
DESIGNERS
SOPHIA BUSH AND JAKE
ALEXANDER ARNOLD

78

Sophia Bush outfits the bedrooms and office of her newly renovated Hollywood house with custom closets.

PRESENTED BY
THE CONTAINER STORE

80

UPTOWN SPUNK

Designer David Netto brings an Upper East Side prewar apartment into the modern age.

WRITTEN AND
DESIGNED BY
DAVID NETTO

88

PLAYING HOCKNEY

Power couple Fairfax Dorn and Marc Glimcher fill a Hamptons spec house with blue-chip art.

BY HILARIE SHEETS
DESIGNER
FAIRFAX DORN

96

PARADISE FOUND

In her Marrakech home, the full breadth of Marisa Berenson's creative talents are on display.

BY VANESSA LAWRENCE
DESIGNER
MARISA BERENSON

104

THE MANOR BORN

Designer Philip Vergeylen thought he'd seen it all. Then came the call to

build and furnish a 25,000-square-foot new home in the center of London.

BY NANCY

HASS
DESIGNER
PHILIP VERGEYLEN

116

RESOURCES

120

NOT FOR SALE

A hand-painted plate by Greek artist Konstantin Kakaniyas



Page 52:
Bulgari Monete necklace, \$61,000.
bulgari.com

ON THE NEWSSTAND COVER

The living room of Sophia Bush's newly renovated midcentury home in Hollywood.

PHOTOGRAPH BY TREVOR TONDRO



E-mail: elledecor@hearst.com



Follow us on **Instagram** and **Twitter**: @elledecor



Like us on **Facebook**: facebook.com/ELLEDECORMag

Write to us: Mailbox, ELLE DECOR,
300 W. 57th St., 27th Fl., NY, NY 10019



TOP: LUKE WHITE; LEFT: RICARDO LABOUGLE



The dining room of a London home designed by Philip Vergeylen, page 104.

Visit service.elledecor.com to order a print subscription, pay your bill, renew your subscription, update your mailing and e-mail addresses, and more. Or write to: Customer Service Department, ELLE DECOR, P.O. Box 37870, Boone, IA 50037. One-year subscription rate \$15 for U.S. and possessions, \$41 for Canada, and \$60 for other international. To purchase digital back issues, please go to backissues.elledecor.com.



آموزشگاه انعکاس منبع جدیدترین اطلاعات، مقالات و دوره‌های آموزشی دکوراسیون داخلی

Eneka.Academy

Eneka.Academy



NEW YORK LOS ANGELES MIAMI CHICAGO TORONTO MEXICO CITY

#MolteniGroup



GREGOR SEATING SYSTEM— VINCENT VAN DUYSSEN

Molteni & C

آموزشگاه انعکاس منبع جدیدترین اطلاعات ، مقالات و دوره‌های آموزشی دکوراسیون داخلی

 Enekas.Academy

 Enekas.Academy

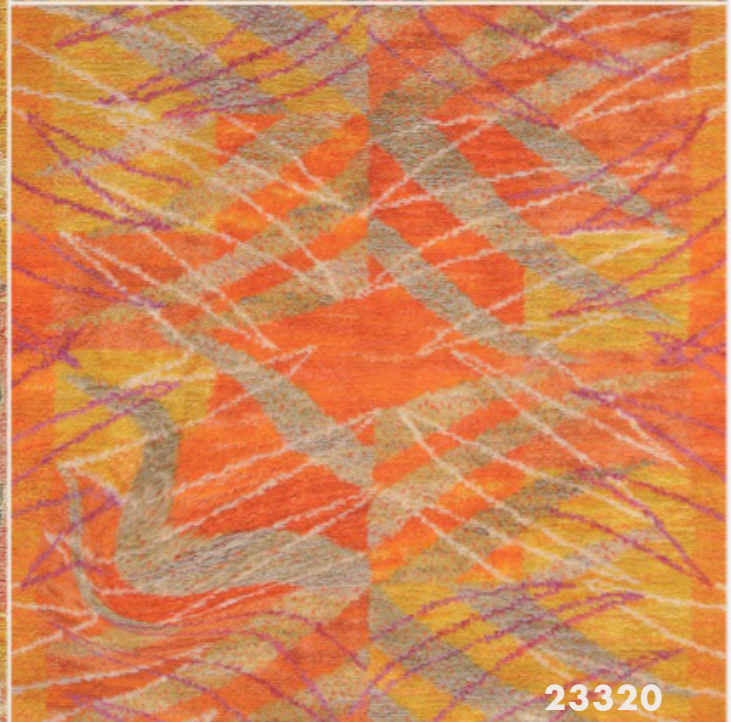




18553



27142



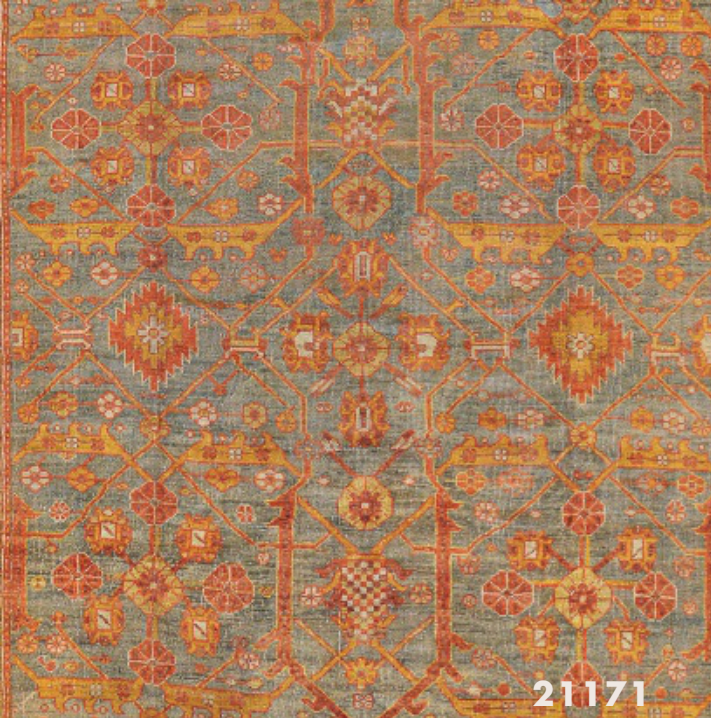
23320



13931

YELLOW ANTIQUE COLLECTION





21171



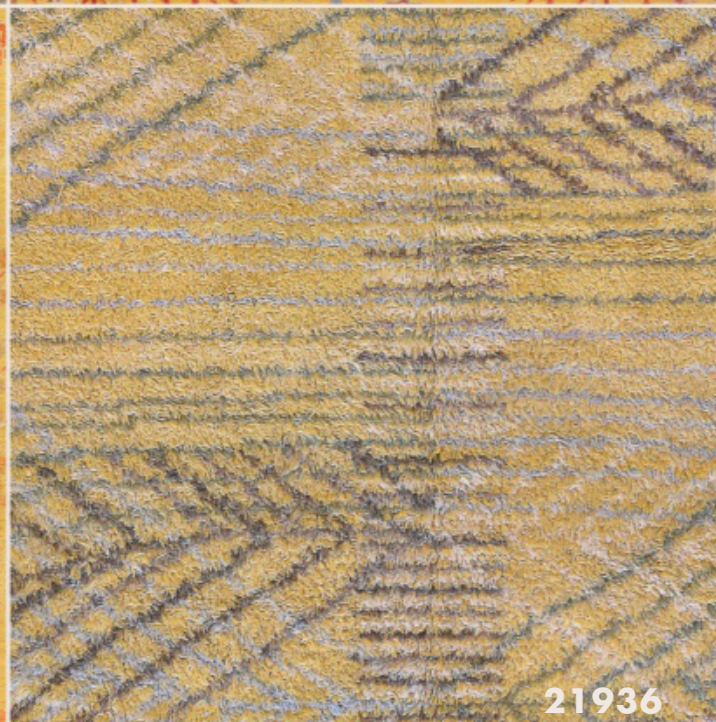
25294



22387



25567



21936



15324



25921



16248



25904



MANSOUR

MANSOUR
MODERN

LONDON · NEW YORK · LOS ANGELES

MANSOUR.COM · 310.652.9999

آموزشگاه انعکاس منبع جدیدترین اطلاعات، مقالات و دوره‌های آموزشی دکوراسیون داخلی

Enekas.Academy

Enekas.Academy



DON KINSELLA

Deputy Visual Director

"By the time March rolls around, I'm ready to escape the New York winter. This year, my wife and I are planning a weeklong sailing trip with friends around the British Virgin Islands."



KBG COFFEE MAKER

"For me, java is an absolute necessity. This drip coffee maker brews a killer batch that gets me ready for the day."

\$309. moccamaster.com



5.3 SERIES TURNTABLE

"My records have always meant a lot to me. I love to play them on this turntable, which was a gift from my wife."

Price upon request.
musichallaudio.com



LAVAGNA

"This East Village spot is a true Italian gem. The food is delicious, the wine list is extensive, and the vibe is cozy."

lavagnanyc.com

ELLE DECOR

EDITOR IN CHIEF Whitney Robinson

EXECUTIVE MANAGING EDITOR
Jeffrey Bauman

EXECUTIVE EDITOR
Ingrid Abramovitch

STYLE DIRECTOR
Parker Bowie Larson

CHIEF VISUAL CONTENT
DIRECTOR, HEARST MAGAZINES
Alix Campbell

SENIOR EDITOR
Vanessa Lawrence

ARTICLES EDITOR
Charles Curkin

VISUAL DIRECTOR
David M. Murphy

INTERNATIONAL DESIGN EDITOR **Cynthia Frank**
CONTRIBUTING DESIGN DIRECTOR **Dian-Aziza Ooka**
DEPUTY DESIGN DIRECTOR **Allie Adams**
MARKET EDITOR **Laurel J. Benedum**
ASSISTANT MANAGING EDITOR **Lillian Dondero**
COPY CHIEF **Jennifer Milne**
CONTRIBUTING SPECIAL PROJECTS EDITOR **Bebe Howorth**
EDITORIAL ASSISTANT **Samantha Swenson**
MARKET EDITORIAL ASSISTANT **Kate McGregor**
DIGITAL IMAGING SPECIALIST **Kevin Arnold**

HEARST VISUAL GROUP

VISUAL EDITOR **Nelida Mortensen**
DEPUTY VISUAL DIRECTOR **Don Kinsella**

ELLEDECOR.COM

DIGITAL DIRECTOR **Elizabeth Angell**
HOME DECOR EDITOR **Monique Valeris**
ASSOCIATE EDITOR **Maggie Maloney**
EDITORIAL ASSISTANT **Lucia Tonelli**

ELLE DECOR CONTRIBUTING EDITORS
CONSULTING EDITOR **Daniel Boulud**

CONTRIBUTORS

Ariel Ashe, Cara Barrett, Chesie Breen, Farhad Farman, Ken Fulk, Claudia Mata Gladish, Lori Goldstein, Genevieve Gorder, Nancy Hass, Patricia Hearst, Kathryn M. Ireland, William Li, Beatriz Pasquel (Mexico City), Jana Pasquel, Sophie Pera (Europe), Stephen Pulvirent, Judi Roaman, Adam Sachs, David Scoroposki, Estee Stanley, Bronson Van Wyck, Vanessa Von Bismarck, Madeline Weinrib, Bunny Williams, Gisela Williams, Michelle Ziff

CONTRIBUTING DESIGN EDITOR **Senga Mortimer**

INTERNATIONAL COORDINATOR **Monique Boniol**

PRODUCTION

OPERATIONS DIRECTOR **Chris Wengiel**
ASSOCIATE DIRECTOR **Julie Bosco**

PUBLISHED BY HEARST

PRESIDENT & CHIEF EXECUTIVE OFFICER **Steven R. Swartz**
CHAIRMAN **William R. Hearst III**
EXECUTIVE VICE CHAIRMAN **Frank A. Bennack, Jr.**

HEARST MAGAZINE MEDIA, INC.

PRESIDENT **Troy Young**
CHIEF CONTENT OFFICER **Kate Lewis**
EXECUTIVE VICE PRESIDENT, CHIEF FINANCIAL OFFICER & TREASURER **Debi Chirichella**
SECRETARY **Catherine A. Bostron**

PUBLISHING CONSULTANTS **Gilbert C. Maurer, Mark F. Miller**

CUSTOMER SERVICE

CALL: 800-274-4687
E-MAIL: EDCcustserv@cdsfulfillment.com
VISIT: service.elledecor.com
WRITE: Customer Service Dept.,
ELLE DECOR
P.O. Box 6000, Harlan, IA 51593

Published at 300 West 57th Street, New York, NY 10019.
Tel: 212-649-2000. ELLE® and ELLE DECOR™ are used under license from the trademark owner, Hachette Filipacchi Presse.

Printed in the USA.

For information on reprints and e-prints, please contact Brian Kolb at Wright's Reprints, 877-652-5295 or bkolb@wrightsreprints.com.



KATE MCGREGOR

Market Editorial Assistant

"In spring, I'm looking forward to venturing to California for the very first time. As a born and raised East Coast girl, I'm excited to see what all the fuss is about."



ODALIE RED LIPSTICK

"I'm obsessed with this color. It's the perfect shade of orangey red, and it goes with everything."

\$42. gucci.com



LUDLOW HOTEL

"Mid-March is my favorite time for a staycation. The Ludlow Hotel, on the Lower East Side, is a great weekend escape."

From \$225.
ludlowhotel.com



ANTIGUA PILLOW

"Archive New York works with artisans in Guatemala to preserve traditional craft techniques, like this handwoven pillow."

\$165. archivenewyork.com

KINSELLA PORTRAIT: KAT WIRSING

آموزشگاه انعکاس منبع جدیدترین اطلاعات ، مقالات و دوره های آموزشی دکوراسیون داخلی

Enekas.Academy

Enekas.Academy



B E R N H A R D T

آموزشگاه انعکاس منبع جدیدترین اطلاعات ، مقالات و دوره‌های آموزشی دکوراسیون داخلی

 Enekas.Academy

 Enekas.Academy





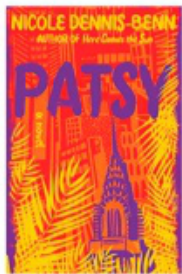
KAILIN VILLAMAR
Integrated Marketing Manager

"I'll be leaving the city soon for a trip to Cancún. I'm staying at Nizuc Resort & Spa—only 10 minutes from the airport, but worlds away from real life."



HYDRATION CREAM

"The whipped, moisturizing formula melts into my skin, making my complexion bright and radiant."
\$65. sundayriley.com



PATSY: A NOVEL

"There's nothing quite like a good read to make my commute feel worthwhile. Patsy is an emotional roller coaster."
\$12. amazon.com



AQUAZZURA SANDALS

"I plan to combat my winter blues with a touch of color, starting with a new pair of shoes."
\$895. bergdorfgoodman.com

ELLE DECOR

VP, GROUP PUBLISHING DIRECTOR/CHIEF REVENUE OFFICER
Jennifer Levene Bruno

ASSOCIATE PUBLISHER, ADVERTISING
William C. Pittel

BRAND MARKETING DIRECTOR
Esther Deming

EXECUTIVE DIRECTOR,
BRAND PARTNERSHIPS & DEVELOPMENT
Hillary Koota Krevlin

EXECUTIVE DIRECTOR,
INTEGRATED MARKETING
Lisa A. Lachowetz

EXECUTIVE DIRECTOR,
BRAND EXPERIENCE
Jennifer Orr

DESIGN ADVERTISING DIRECTOR
Angela Jett Okenica

NATIONAL DIGITAL DIRECTOR
Tara Weedfald

GROUP FINANCE DIRECTOR
Christopher J. Tosti

LUXURY & DESIGN COLLECTION NEW YORK SALES

EXECUTIVE DIRECTOR,
FASHION, JEWELRY & WATCH
Carl Kiesel
EXECUTIVE DIRECTORS,
HOME FURNISHINGS
Karen Elizabeth Marx,
Jon Walker

EXECUTIVE DIRECTOR, HOME PRODUCTS
Chris Agostinelli
EXECUTIVE DIRECTOR, BEAUTY
Angela Parauda
EXECUTIVE DIRECTOR, JEWELRY
Deena Schacter
EXECUTIVE DIRECTOR,
TRAVEL & FINANCE
Taylor Rae Schiffman

EXECUTIVE DIRECTOR,
INTERNATIONAL HOME FURNISHINGS
Sarah Smith
ADVERTISING SERVICES
MANAGER
Judy Braunstein

LUXURY & DESIGN COLLECTION MARKETING

BRAND PARTNERSHIPS & DEVELOPMENT
DIRECTOR **Laura Ives Colony**
MANAGER **Lauren Corbin**

INTEGRATED MARKETING
SENIOR MANAGER **Jennifer Lavoie**
MANAGERS **Brittney Burford,**
Jessica Molinari, Kailin Villamar
ASSOCIATE MANAGERS
Karina Camargo,
Mary Kate Murray
SENIOR COORDINATOR
Elena Metzner

BRAND EXPERIENCE
SENIOR DIRECTORS
Jennifer C. Lambros,
Suzy Rechtermann

CREATIVE DIRECTORS **Glenn Maryansky, Frauke Ebinger**
DESIGNER **Stephanie Athanasopoulos**
EXECUTIVE ASSISTANT TO THE GROUP PUBLISHING DIRECTOR **Caroline Filips**
ADVERTISING SALES ASSISTANTS **Ashleigh Uzoaru, Helen Ziminsky**

REGIONAL OFFICES

NEW ENGLAND **Taylor Rae Schiffman, 212-903-5321** SOUTHEAST **Jim Blazeovich, Yvonne Rakes, Whitney Otto, Blaze & Associates, 704-321-9097; Rita Walker, Mandel Media, 404-256-3800** SOUTHWEST **Virginia Davis, Wisdom Media, 214-526-3800** MIDWEST **Karen Loveland, Donna Schultz, 312-251-5370** LOS ANGELES **Cynthia McKnight, CM Media Sales, 310-291-2730; Joanne Medeiros, Medeiros & Associates, 424-317-0078; Sherri Zigman, Zigman Media, 310-663-6352** NORTHWEST **Meghan FitzGerald Tuohey, Poppy Media, 415-990-2825** CANADA **John D. Magner, York Media Services, 416-598-0101** ITALY **Roberta Battocchio, Global General Manager, 39-02-6619-2327, RBattocchio@hearst.it; Cinzia Scacchetti, Global Editorial Coordinator, Via Bracco 6, 20159 Milano, 39-02-6619-2296, CScacchetti@hearst.it** UNITED KINGDOM **Danielle Klein, Global Sales Director, Hearst Global, 72 Broadwick Street, London, W1F 9EP, 44-20-7439-5167, Danielle.Klein@hearst.co.uk**

CIRCULATION

VICE PRESIDENT, STRATEGY & BUSINESS MANAGEMENT **Rick Day**

HEARST DIRECT MEDIA

VICE PRESIDENT **Christine L. Hall**

TRADEMARK NOTICE

ELLE® AND ELLE DECORATION™ ARE USED UNDER LICENSE FROM THE TRADEMARK OWNER, HACHETTE FILIPACCHI PRESSE, A SUBSIDIARY OF LAGARDÈRE SCA.

ELLE
INTERNATIONAL

A DIVISION OF **Lagardère**

CEO **Constance Benqué**

CEO ELLE INTERNATIONAL LICENSES **François Coruzzi**

SVP/INTERNATIONAL DIRECTOR OF ELLE DECORATION **Valéria Bessolo Llopiz**

SVP/DIRECTOR OF INTERNATIONAL MEDIA LICENSES & SYNDICATION **Mickael Berret**

CREATIVE DIRECTOR OF ELLE DECORATION **Linda Bergmark**

MARKETING MANAGER OF ELLE DECORATION **Morgane Rohée**

SENIOR DIGITAL PROJECT MANAGER OF ELLE DECORATION **Moda Zere**

SYNDICATION OF ELLE DECORATION

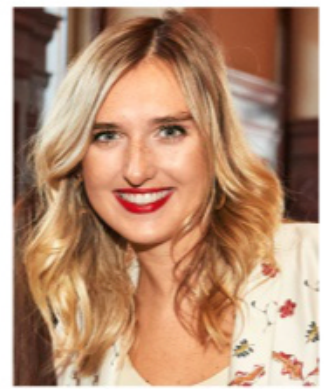
DEPUTY SYNDICATION TEAM MANAGER **Marion Magis**

SYNDICATION COORDINATOR **Johanna Jegou** COPYRIGHTS MANAGER **Séverine Laporte**

DATABASE MANAGER **Pascal Iacono**

INTERNATIONAL AD SALES HOUSE
LAGARDÈRE GLOBAL ADVERTISING

SVP/INTERNATIONAL ADVERTISING **Julian Daniel**
JDANIEL@LAGARDEREADVERTISING.COM



MARY KATE MURRAY
Associate Integrated Marketing Manager

"I can't wait to see *West Side Story* on Broadway this month. I have always loved the music and am eager to see Ivo van Hove's ultramodern interpretation."



BACKPACK

"My love for fashion came from my mother, who gave me this vintage Louis Vuitton backpack when I moved to New York."
louisvuitton.com



ENAMEL BANGLE

"My aunt gave me this beautiful Hermès piece, and I wear it every day."
\$455. hermes.com



FIASCHETTA PISTOIA

"I meet my girlfriends for wine and pasta at this East Village spot. They have the best *cacio e pepe* in the city."
fiaschetteriapistoia.com



MURRAY PORTRAIT: LONDON PHILLIPS

آموزشگاه انعکاس منبع جدیدترین اطلاعات ، مقالات و دوره های آموزشی دکوراسیون داخلی

Enekas.Academy

Enekas.Academy

Live Your Style



ONE KINGS LANE

NEW YORK

MANHATTAN

SOUTHAMPTON

BOSTON

FURNISHINGS • VINTAGE • DECOR • ART • GIFTS • INTERIOR DESIGN

Use code **OKLELLEDECO2**
to receive
20%
off your next order.*

آموزشگاه انعکاس منبع جدیدترین اطلاعات ، مقالات و دوره‌های آموزشی دکوراسیون داخلی

 Enekas.Academy

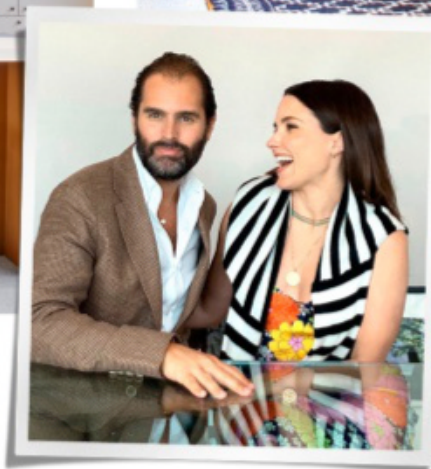
 Enekas.Academy



EDITOR'S LETTER



CLOCKWISE FROM LEFT: Sophia Bush with interior designer Jake Alexander Arnold and contractor Orie Prince at her newly renovated house in the Hollywood Hills. In Bush's master bedroom, the custom closet is from the Container Store. The countertop in the master bath is by Caesarstone, the sink fittings are by Brizo, and the wall tiles are from the Tile Shop. The living room's sliding doors are by LaCantina Doors. Whitney and Sophia. In the kitchen, the range is by Dacor, and the custom island is topped with Caesarstone's Fresh Concrete.



in our cover story: Feast your eyes on the Container Store closets (each room has a different organization system) or the stunning kitchen outfitted with Caesarstone counters, Brizo faucets, and Dacor appliances. Thanks to everyone who made this house an incredible reality.

Elsewhere in this issue, you'll see the home of another glamorous

Star Quality

WHEN I FIRST MET THE ACTRESS AND activist Sophia Bush at designer Kathryn Ireland's Santa Monica, California, nest a few years ago, I was impressed by her love of design, which showed through in everything from her passion for collecting to a deep knowledge of architectural history. (Her throaty laugh and infectious warmth were also draws, but that's another story.) You might know Sophia from TV shows like *One Tree Hill*, *Chicago P.D.*, and *This Is Us*; she is also a tireless advocate for women's and environmental rights. And I was thrilled to learn that she was launching a design firm, Filles Des Rincón, with her friend Lauren McGrady. So we hatched a plan: What if *ED* teamed up with Sophia on her first design project, a midcentury guesthouse next to her abode in the Hollywood Hills? This month, we are unveiling the results

star, Marisa Berenson, who generously opened the doors to her riad in Marrakech. There's the Hamptons residence of Pace Gallery scion Marc Glimcher and his wife, indie art champion Fairfax Dorn, who also recently launched her own design business; an amazing house in London by Paolo Moschino A-Lister Philip Vergeylen; and an Upper East Side reinvention by David Netto and Gil P. Schafer. As for Sophia, as good as this project is, with her interests in both design and politics, I wouldn't be surprised if she were one day redecorating the White House—and living in it. ■

Whitney

Whitney Robinson, Editor in Chief
elledecor@hearst.com

Follow me on Instagram: @whowhatwhit

TREVOR TONDRO (5). FOR DETAILS, SEE RESOURCES

آموزشگاه انعکاس منبع جدیدترین اطلاعات، مقالات و دوره‌های آموزشی دکوراسیون داخلی

Enekas.Academy

Enekas.Academy

CHILDREN'S



SPLASH

CHILDRENFREEDOM.COM/SPLASH

آموزشگاه انعکاس منبع جدیدترین اطلاعات ، مقالات و دوره‌های آموزشی دکوراسیون داخلی

 Enekas.Academy

 Enekas.Academy





Mitchell Gold + Bob Williams

Artisans of Comfort



SPRING 2020

آموزشگاه انعکاس منبع جدیدترین اطلاعات، مقالات و دوره‌های آموزشی دکوراسیون داخلی

 Eneka.Academy

 Eneka.Academy



circa LIGHTING®

EXPERIENCE VISUAL COMFORT



PRESIDIO SMALL LANTERN
IN HAND-RUBBED ANTIQUE BRASS
DESIGNER: IAN K. FOWLER



SHOP NOW: [CIRCALIGHTING.COM](https://www.circalighting.com)

ATLANTA AUSTIN BOSTON CHARLESTON CHICAGO DC DENVER GREENWICH HOUSTON LA

آموزشگاه انعکاس منبع جدیدترین اطلاعات ، مقالات و دوره‌های آموزشی دکوراسیون داخلی

 Eneka.Academy

 Eneka.Academy



WHAT TO SEE, READ, AND DO RIGHT NOW

POV

ON THE TOWN

Rawther Fancy

SASHA BIKOFF
CHANNELS A GROWN-UP
ELOISE IN HER
DESIGN FOR THE FIRST
ELLE DECOR CAFÉ,
AT THE PLAZA HOTEL.

EVER WONDER WHAT ELOISE would be like as a 30something in New York City? Still living at the Plaza hotel, in a room on the “tippy-top floor,” no doubt. This question was foremost when designer Sasha Bikoff was chosen by ELLE DECOR to reimagine the iconic Rose Club, which overlooks the Plaza’s lobby and has been a venue for performances by the likes of Bob Hope and Liza Minnelli. The pop-up ELLE DECOR Café is where a grown-up Eloise might come for drinks with her friends. “This is where she’d be hanging out,” Bikoff says of the café, which debuted in December and will be open through March 31.

Bikoff, a Manhattan interior designer who landed on *ED*’s A-List for the first time last summer, grew up going to the Plaza with her family on Sundays. For an Eloise fan, the commission was her childhood dream come true. While she wasn’t allowed to touch the room’s historically significant moldings and wood paneling, nothing else was off-limits. To create a fun, irreverent new ▶



FROM TOP: The pop-up ELLE DECOR Café at the Plaza, in the hotel’s Rose Club, which designer Sasha Bikoff redecorated; the sofa is from Universal Furniture, and the custom rug is by the Rug Company. Bikoff (left) with Brooke Shields at the launch of the ELLE DECOR Café. A menu on a side table by Calligaris. **RIGHT:** The custom curtains from the Shade Store are in Bikoff’s Uptown Toile fabric for Vervain (background).



INTERIORS: CORY DAWSON (2); PORTRAIT: DANIEL GONZALEZ; FOR DETAILS, SEE RESOURCES

آموزشگاه انعکاس منبع جدیدترین اطلاعات، مقالات و دوره‌های آموزشی دکوراسیون داخلی

Enekas.Academy

Enekas.Academy

POINT OF VIEW

look in the space, Bikoff collaborated with the Rug Company on the design of a floral rug and added glossy oxblood-red chairs and white marble tables from Calligaris. She also commissioned custom curtains from the Shade Store, which are made of her new Uptown Toile from Vervain in lavender and red.

A modern take on traditional toile de Jouy textiles, the old world-style pattern is updated with imagery straight out of *Sex and the City*. “It depicts a woman living her best life—having a shopping spree on Fifth Avenue, martinis with friends, and picking up Midtown finance guys,” Bikoff says. And what would this millennial city child have made of the ELLE DECOR Café that she inspired? “It’s Eloise,” Bikoff notes. “She would definitely approve of what I’ve done.” *theplaza ny.com* —Charles Curkin



ABOVE: The barstools are from the ELLE DECOR Collection.
RIGHT: The café’s oxblood chairs are by Calligaris.



CLOCKWISE FROM LEFT: Jeff Goldblum at the launch party in Hollywood. Diamond Point tray. A sterling beer mug. Olympic fencer Miles Chamley-Watson sports Tiffany men’s silver chains. A sterling pool chalk. A\$AP Ferg tries out the Tiffany pool table. A Tiffany basketball. Diamond Point cuff links in 18-karat gold.



LIFESTYLE

Men in Blue

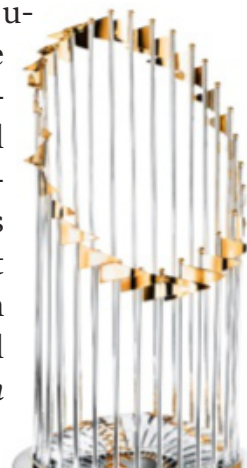
TIFFANY & CO. HEADS WEST TO DEBUT A NEW LINE AIMED AT A MALE CLIENTELE.

AT THE LAUNCH OF THE new Tiffany & Co. men’s collection at the Hollywood Athletic Club, the actor Jeff Goldblum showed up with a bejeweled Schlumberger pin attached to his tuxedo’s lapel (“It’s an important piece, plus I like any name that starts with *shla*—like *schlimazel*,” he joked). Justin Theroux went minimalist in a classic gold chain (“It’s become more OK for men to adorn themselves,” he said). And then there was the rapper A\$AP Ferg, who piled it on with multiple ropes of Tiffany pearls—and a hairdo in trademark Tiffany blue to match. Eat your heart out, Audrey Hepburn: At the launch party—which also featured a Tiffany-blue pool table and a display of sports trophies made at the iconic American luxury brand’s Rhode Island workshop—men were now wearing the jewels.

For Tiffany’s chief artistic officer, Reed Krakoff, the time was ripe for a men’s line, even in this era of gen-

der fluidity. “Half the people in our stores are men buying engagement rings or gifts for their spouses and mothers,” he says. “But while we had money clips and cuff links, this was a category that hadn’t gotten much attention.” At the same time, he said, men are not just wearing more jewelry, but “are into curating their own life—whether it is where they eat, how they relax, or where they travel.”

The Tiffany men’s collection includes everything from retro, American-inspired jewelry styles—think signet rings and dog tags—to a sterling-silver chess set made to look like corrugated cardboard. One item that has been flying out the door (and into hoops): Tiffany-blue basketballs. As A\$AP Ferg noted at the opening event: “I’m surprised they waited this long!” *tiffany.com* —Ingrid Abramovitch



ELLE DECOR CAFÉ INTERIOR: CORY DAWSON

آموزشگاه انعکاس منبع جدیدترین اطلاعات، مقالات و دوره‌های آموزشی دکوراسیون داخلی

Enekas.Academy

Enekas.Academy

FLEXFORM

MADE IN ITALY



ROMEO SOFA

Antonio Citterio Design

FLEXFORM NEW YORK

Tel. 212 355 2328

FLEXFORM LOS ANGELES

Tel. 310 424 5460

FLEXFORM SAN FRANCISCO

Tel. 415 399 0770

Also available at
selected dealers in
Austin, Boston,
Chicago, Dallas,
Denver, Houston,
Los Angeles, Miami, New York

AGENT FOR USA

Antonella Cremonesi

Tel. 312 265 1181

antonella@alphaonestudio.com

آموزشگاه انعکاس منبع جدیدترین اطلاعات ، مقالات و دوره‌های آموزشی دکوراسیون داخلی

 Enekas.Academy

 Enekas.Academy



POINT OF VIEW



60 SECONDS WITH...

Royal Rogers

SHE IS THE DIRECTOR OF A NEW FILM ON **PAUL R. WILLIAMS**, THE ICONIC L.A. ARCHITECT.

Your new documentary, Hollywood's Architect: The Paul R. Williams Story, aired in February on PBS. How long did you spend on it?

RR: Quite a few years. The enthusiasm was incredible. Every person who heard Paul's story stopped and listened, and their eyes lit up. In 1923, Paul Revere Williams had the distinction of being the first black architect to gain membership in the American Institute of Architects (AIA). Would you say the industry has improved in terms of representation since then?

RR: Yes, but only slightly. It's something that the industry is finally waking up to. The percentage of

African American members of the AIA is very low, but they are taking steps to address it with membership and mentoring programs. They helped to support this documentary along with the National Organization of Minority Architects. Despite his esteem as an architect, as a black man he wasn't welcome in the hotels and restaurants that he designed. What kind of effect did that have on him?

RR: He used it as a motivator. His granddaughter says he never brought that kind of unpleasantness home, but it's obvious it got under his skin. An example we give is the Beverly Hills Hotel, where

he built the famed Crescent Wing. He wouldn't, for instance, be able to go down and have lunch by the pool.

How did he get commissions despite the systemic racism of the era?

RR: Los Angeles was growing fast, there was so much building, and it was just a wide-open place then. It was a city that didn't necessarily see color if you had skills.

What was his greatest achievement?

RR: That he did it—that he persevered. He designed many landmarks, such as the Beverly Hills Saks Fifth Avenue store and the MCA Headquarters building; and he was part of the team that built Los Angeles International Airport. *How would you describe his style?*

RR: He did everything from Colonial Revival to midcentury modern (for Frank Sinatra's bachelor pad). He didn't come in like a Frank Lloyd Wright, telling clients what he was going to do. He asked, "What do you want?"

What's the most interesting thing you discovered about Williams during your research?

RR: That he taught himself to draw upside down, so he wouldn't have to lean over his clients. It became his calling card.

What will his legacy be?

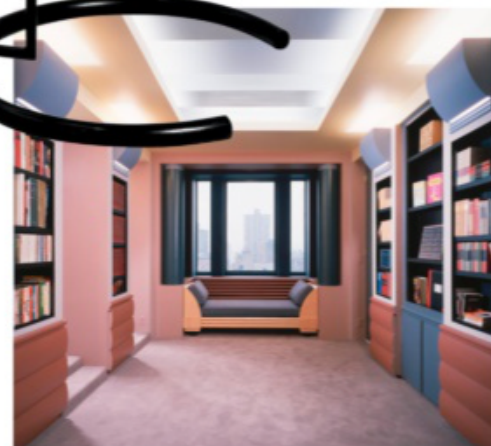
RR: He will be remembered for blazing a trail and showing that color doesn't know any bounds of creativity. We see that in other fields, but he certainly showed it in architecture.

—Charles Curkin



ABOVE, CLOCK-WISE FROM TOP LEFT: The Beverly Hills Hotel, MCA Headquarters, and Saks Fifth Avenue, all designed by Paul R. Williams in Beverly Hills. **RIGHT:** Architect Paul R. Williams.

DATEBOOK THE MUST-SEE EXHIBITIONS ON OUR CALENDAR.



TOP: Eileen Gray's E 1027 side table.

ABOVE: From "Home Stories," the Reinhold apartment in New York, designed by Michael Graves.

"Home Stories"

**Through August 23;
Weil am Rhein, Germany**

The Vitra Design Museum presents "Home Stories: 100 Years, 20 Visionary Interiors." Through a series of iconic interiors by architects and designers such as Adolf Loos, Finn Juhl, and Elsie de Wolfe, visitors are transported back in time to explore the evolution of the contemporary private interior. design-museum.de

"Eileen Gray"

**Through July 10;
New York City**

Renowned architect, designer, and artist of the 20th century Eileen Gray was best known for her avant-garde furniture in lacquer and tubular steel frames. The exhibition, now on view at the Bard Graduate Center Gallery, showcases nearly 200 of Gray's works and, in five thematic sections, parses the pivotal moments of her career. bgc.bard.edu

"Harper's Bazaar: First in Fashion"

February 28–July 14; Paris

The Musée des Arts Décoratifs marks the reopening of its fashion galleries with a paean to Harper's Bazaar.

Highlighting the publication's progression from its birth as a literary



weekly in 1867 to the present, the show features a dynamic mix of fashion artifacts, writings, videos, and more. madparis.fr

—Samantha Swenson

BEVERLY HILLS HOTEL: SLIM AARONS/GETTY IMAGES; MCA HEADQUARTERS: MAYNARD L. PARKER, COURTESY OF THE HUNTINGTON LIBRARY, SAN MARINO, CA; SAKS FIFTH AVENUE: ERIK LATTWEIN/ALAMY; WILLIAMS PORTRAIT: ALLAN GRANT/ THE LIFE PICTURE COLLECTION VIA GETTY IMAGES; VITRA: PETER AARON/OTTO

آموزشگاه انعکاس منبع جدیدترین اطلاعات، مقالات و دوره‌های آموزشی دکوراسیون داخلی

Enekas.Academy

Enekas.Academy

THE ITALIAN SENSE OF BEAUTY



MADE IN ITALY
CERTIFIED

MIA
by CARLO
CRACCO

KITCHENS, LIVING AND BATHROOMS

Flagship Stores NEW YORK, MIAMI

Scavolini Soho Gallery, New York, NY - Scavolini New York, Midtown Manhattan, NY - Scavolini Miami, Miami, FL - Brooklyn, NY - Los Angeles, CA - Orange County, CA - Roseville, CA - San Gabriel, CA - Washington, DC - Aventura, FL - Naples, FL - Chicago, IL - Boston, MA - Detroit, MI - Bergen County, NJ - Las Vegas, NV - **BARBADOS** - **CANADA**: Toronto - Vancouver - Montreal - **GUATEMALA**: Guatemala City - **EL SALVADOR**: San Salvador - **MEXICO**: Mexico City - Monterrey - Los Cabos - Merida - Turreon - Huatulco - **NICARAGUA**: Managua - **PANAMA**: Panama City - **PERÚ**: Lima - **PUERTO RICO**: San Juan - **REP. DOMINICANA**: Santo Domingo - **VENEZUELA**: Caracas - Valencia - Puerto La Cruz

SCAVOLINI™

For further information Scavolini USA, Inc. Tel. 212.334.6776 - contact@scavoliniusa.com

آموزشگاه انعکاس منبع جدیدترین اطلاعات، مقالات و دوره‌های آموزشی دکوراسیون داخلی

 Enekas.Academy

 Enekas.Academy



THE BEST DESIGN DISCOVERIES

WHAT'S

O

T



In Plume

Unveiled during Art Basel Miami 2019, **Marc Ange's** Il Pavone capsule collection for **Visionnaire** was inspired by the peacocks Ange saw on a trip to India. Taken with the birds' maximalist beauty, he created an armchair and this throne. Crafted from camel leather, custom Visionnaire fabrics, and bronze-plated brass, it pays homage to the peacock's extravagant, eye-catching plumage.

102.5" w. x 35.5" d. x 59" h., price upon request. visionnaire.com

BY VANESSA LAWRENCE

PRODUCED BY LAUREL J. BENEDUM

آموزشگاه انعکاس منبع جدیدترین اطلاعات، مقالات و دوره‌های آموزشی دکوراسیون داخلی



Enekas.Academy



Enekas.Academy





S Harris

sharris.com 800 999 5600

آموزشگاه انعکاس منبع جدیدترین اطلاعات ، مقالات و دوره‌های آموزشی دکوراسیون داخلی

Enekas.Academy

Enekas.Academy



WHAT'S HOT THE BEST DESIGN DISCOVERIES



British designer **Julian Chichester** injects a delightful *Alice in Wonderland* topsy-turvy spirit into this whimsical Rosa Trolley cart, shown in a Teal Vellum finish. 38.5" w. x 23" d. x 31.5" h., available in other finishes, \$4,785. julianchichester.com



Scalloped black lines and gold-leaf accents give this white ceramic Faith table lamp from **Mitzi by Hudson Valley Lighting** an Art Deco glamour. 14" w. x 22.5" h. with a 6" dia. base, \$260. hvlgroup.com



As sweet and irresistible as candy—without the calories or toothache—these **Thomas Fuchs Creative** drinking vessels are handblown by glass artisans in Murano, Italy. Available in other colors, \$390 for set of six. thomasfuchscreative.com



A winged piece of saddle hide wraps around the back of this jacquard-upholstered Angie armchair from **Minotti**, reminiscent of the cinched, sculpted form of a corset. 34.5" w. x 37" d. x 34.5" h., available in other sizes and colors, \$8,155. minottiny.com



A trip to Rajasthan prompted Italian designer **Matteo Cibic**'s new collection of rugs, entitled Wunderkammer (a reference to mid-16th-century cabinets of curiosities), for the socially minded Indian brand **Jaipur Rugs**. The wool-and-viscose hand-tufted carpets are made by a network of 40,000 weavers across India. 8' x 10', available in other sizes and colors, \$2,410. jaipurrugs.com



MAXALTO IS A B&B ITALIA BRAND.
COLLECTION COORDINATED BY ANTONIO CITTERIO.
WWW.MAXALTO.IT



MAXALTO

آموزشگاه انعکاس منبع جدیدترین اطلاعات ، مقالات و دوره‌های آموزشی دکوراسیون داخلی

 Enekas.Academy

 Enekas.Academy



WHAT'S HOT THE BEST DESIGN DISCOVERIES



Designed by **Elena Salmistraro** for **Bottega Intreccio**, these Lisetta armchairs in hand-carved rattan, wicker, and Vienna straw are an ode to Elisa Caponi, the matriarch of the family that established Bottega Intreccio's hometown of Mogliano, Italy, as a weaving center.

From left: 32" w. x 26.5" d. x 71" h.; 32" w. x 26.5" d. x 35.5" h., from \$4,680 each. artemest.com



The lines of this canaletto wood, leather, and steel Ren magazine rack from **Poltrona Frau** take their cues from the strokes in the Chinese character *ren*, which means "person."

14" w. x 16" d. x 27.5" h., \$2,500. poltronafrau.com



The silk-and-velvet pillows in British designer **Emma J. Shipley's** signature collection feature animal motifs inspired by safaris and John James Audubon illustrations.

Available in 17.5" sq. and 17.5" l. x 11" w., \$125 each. emmajshipley.com



María José González-Moro, Marta Cotoner, and Juqui Suárez de Lezo of **Molecot** hand-paint porcelain from Limoges with expressive art, such as the evocative brushstrokes on these pieces from their Pink Brush collection.

From \$200 for a pasta bowl or salad bowl. molecot.com

آموزشگاه انعکاس منبع جدیدترین اطلاعات ، مقالات و دوره های آموزشی دکوراسیون داخلی

Enekas.Academy

Enekas.Academy



Fast drying. No extreme heat.
Engineered for different hair types.

Engineered for fast drying, with intelligent heat control to help protect your natural shine. Features styling attachments to style different types of hair.



dyson supersonic

Available now at [dyson.com/hairdryer](https://www.dyson.com/hairdryer)

آموزشگاه انعکاس منبع جدیدترین اطلاعات ، مقالات و دوره‌های آموزشی دکوراسیون داخلی

 Enekas.Academy

 Enekas.Academy



Swatches from Duro Olowu's fabric collection for Soane Britain. **CLOCKWISE FROM TOP LEFT:** Timbuktu in Baobab, Regency Swirl in Etrurian Blue and Adam's Pink, Stencil Leaf in Raspberry, ottoman in Koro in Water Nymph, and Timbuktu in Mirage.



Olowu and Lulu Lytle in the Soane Britain showroom in London.

SOANE BRITAIN'S LATEST FABRIC collection, a team effort with the Nigerian-born, London-based fashion designer Duro Olowu, is the result of a fortuitous Instagram fluke. "I walked past Soane one evening in Pimlico, and they had this beautiful window [display]," Olowu recalls. "I took a picture, posted it, and got so many likes." Lulu Lytle, the cofounder and creative director of the 23-year-old British home-furnishings brand, noticed and responded with a thank-you message. Soon, a plan was hatched for Olowu to collaborate with Soane on his first home-fabrics line. Olowu's "irreverence for any rules, incredibly bold use of color, and combinations of patterns have always appealed to me," Lytle says.

For his part, Olowu was drawn to Soane's layered English-country styles, replete with antique motifs, florals, and botanicals. "It's very classic, but it's also not conventional," he observes.

Olowu is a self-professed textiles and decorating buff. He collects West African fabrics and is a fan of the work of the iconic New York interior designer Billy Baldwin. Olowu's Soane collection, comprising four fabric designs in 11 colorways, takes inspiration from a wide range of sources, from the mud mosques of Mali ("A feat of the imagination," he enthuses) to Georgian wrought-iron architecture and the Arts and Crafts movement. The idea was "to create a sophisticated celebration of pattern," Olowu says. ■

Man of the CLOTH

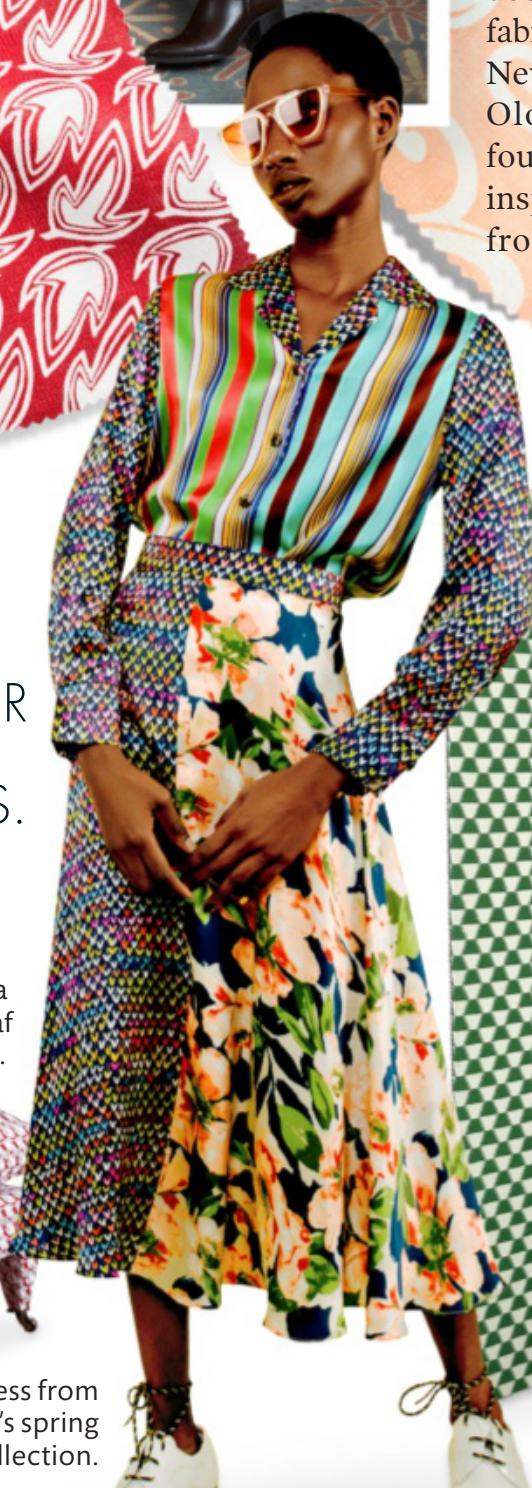
LONDON FASHION DESIGNER **DURO OLOWU** DEBUTS HIS FIRST LINE OF HOME FABRICS.

BY JESSICA BUMPUS
PRODUCED BY PARKER BOWIE LARSON



Soane's Rampart sofa in Stencil Leaf in Raspberry.

A dress from Olowu's spring 2020 collection.



Screen in Timbuktu in Thorn Apple.

FABRIC SWATCHES: ALLIE HOLLOWAY; MODEL: CHRISTINA EBENEZER, COURTESY OF DURO OLOWU. FOR DETAILS, SEE RESOURCES

HIBERNATE

NO BARS. NO SPRINGS. PURE COMFORT.



AMERICAN
LEATHER®

Visit these partners and AMERICANLEATHER.COM for more information

AZ Thomasville & More 602.278.3500 CA Cantoni-Irvine 949-585-9191 | Cantoni-Los Angeles 323.634.0909 | Lawrence 888.790.6477 | MichaelKate Interiors 805.963.1411
| Sunrise Home 415.456.3939 FL Wassers Exclusive Furniture & Interiors 954.454.9500 | Sklar Furnishings 561.862.0800 GA Cantoni-Atlanta 404.881.8111

آموزشگاه انعکاس منبع جدیدترین اطلاعات ، مقالات و دوره‌های آموزشی دکوراسیون داخلی

 Enekas.Academy

 Enekas.Academy



SHOP TALK



GLASS Menagerie

IN LONDON, ARTIST YUTTANA ABKORNBUREE HAND-PAINTS DELICATE HEIRLOOMS FOR A-LIST COLLECTORS.

BY MICHELLE ZIFF
PRODUCED BY PARKER BOWIE LARSON
PHOTOGRAPHS BY LUKE WHITE



The Thomas Goode shop in London's Mayfair.

ABOVE: Glass artist Yuttana Abkornburee.

BELOW: Macaw vase, \$2,400.



THE THAI GLASS ARTIST YUTTANA "TEE" Abkornburee is a soft-spoken man whose gentle demeanor belies the fact that his exquisite creations are collected by the likes of Sir Elton John and members of the British royal family. For the past 11 years, he has hand-painted his delicate flora and fauna on glassware—everything from Champagne flutes to cake stands—at Thomas Goode & Co., the legendary tableware shop in a redbrick Victorian building in London's Mayfair neighborhood.

Thomas Goode's commercial director, Andrew Guest, was introduced to Abkornburee in Thailand in the early aughts. Abkornburee was then working in calibration at General Motors, but he had developed a reputation as a talented artist. Guest invited him to paint on-site at the Thomas Goode store in 2009.

Known for his flora and fauna, Abkornburee says his inspiration stems from memories of growing up in Thailand surrounded by nature and observing his father—a monk and artist who painted at the local temple—while tending the family rice fields on the border of Cambodia. He documents his craft on his Instagram account, @tee.glasspainter. For Abkornburee, the hand-decorated pieces he creates at Thomas Goode give him "the opportunity to share my heritage, honor my father's memory, and make my family proud." That said, a highlight was when the actress Elizabeth Hurley "personally thanked me for her beautiful cake stand," he says. We'll raise a glass to that. thomasgoode.com ■

FROM TOP: Display cases at Thomas Goode. Meadow vase, \$3,115. Eden highball tumbler, \$228.

آموزشگاه انعکاس منبع جدیدترین اطلاعات، مقالات و دوره‌های آموزشی دکوراسیون داخلی

Enekas.Academy

Enekas.Academy

LUSTERTONE ICONIX™
STAINLESS STEEL SINK



ELUHH3017TPD

© 2020 Elkay Manufacturing Company

ELKAY® LUSTERTONE ICONIX STAINLESS STEEL SINK WITH PERFECT DRAIN®

Express your desire for clean, simple design with the new Lustertone Iconix™ stainless steel sink. Its sophisticated shape keeps wine glasses upright, while its sleek, smooth finish protects the surface from everyday wear and tear — so you can achieve a modern yet timeless look.

ELKAY®

آموزشگاه انعکاس منبع جدیدترین اطلاعات، مقالات و دوره‌های آموزشی دکوراسیون داخلی

 Enekas.Academy

 Enekas.Academy



TRUTH IN DECORATING



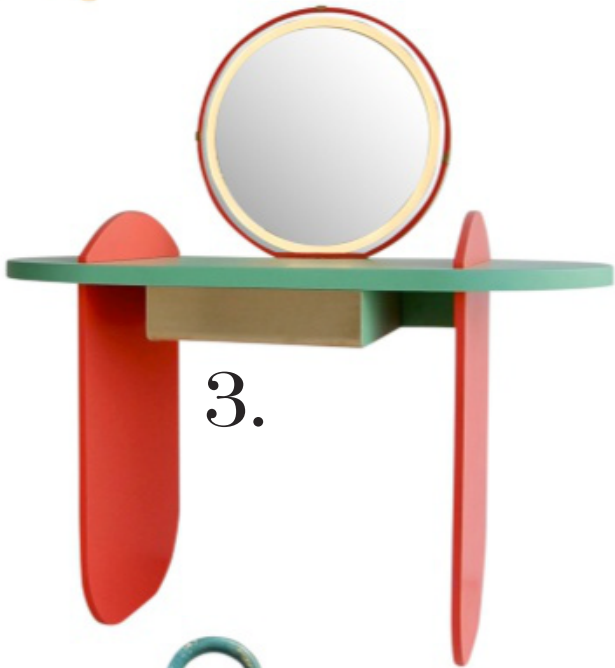
“Use a dressing table to introduce **color** and pattern into a space.”
ELLIE CULLMAN
INTERIOR DESIGNER



“Vanities are not extravagant or unnecessary, but tremendously **functional** pieces of furniture.”
SUZANNE TUCKER
INTERIOR DESIGNER



Mirror,
MIRROR
FOUR EXPERTS
REFLECT ON
THE MODERN
DRESSING TABLE,
STILL A LUXURIOUS
STAPLE OF
INTERIOR DESIGN.
PRODUCED AND WRITTEN BY
KATE MCGREGOR



“Consider them temples of **personal luxury**, not just for getting-ready tasks.”
MARTYN LAWRENCE
BULLARD
INTERIOR DESIGNER



1.
**ALTREFORME
BETTE DAVIS EYES
VANITY**
33" w. x 19.5" d. x 53.5" h.,
\$7,149.
altreforme.com

2.
**VG NEW
TREND SECRET 3
BLUE AND RED
VANITY DESK**
55" w. x 28" d. x 30" h.,
\$12,810. artemest.com

3.
**DESIGN KRAFT
MIRROR MODE
VANITY**
48" w. x 23.5" d. x 50.5" h.,
\$1,906.
design-kraft.com

4.
**CIPRIANI HOMOOD
COCOON VANITY
TABLE**
55" w. x 19.5" d. x 30.5" h.,
\$12,520.
ciprianihomood.com

5.
**PORTE ITALIA
SAN SAMUELE
VANITY**
40" w. x 20" d. x 30" h.,
\$9,294.
porteitalia.com ▶



PERENNIALS

LUXURY PERFORMANCE FABRICS AND RUGS



TRUTH IN DECORATING

6.



“It is a **ritual space**, a personal area where you can have time just for you.”

DANIEL MARTIN
MAKEUP ARTIST



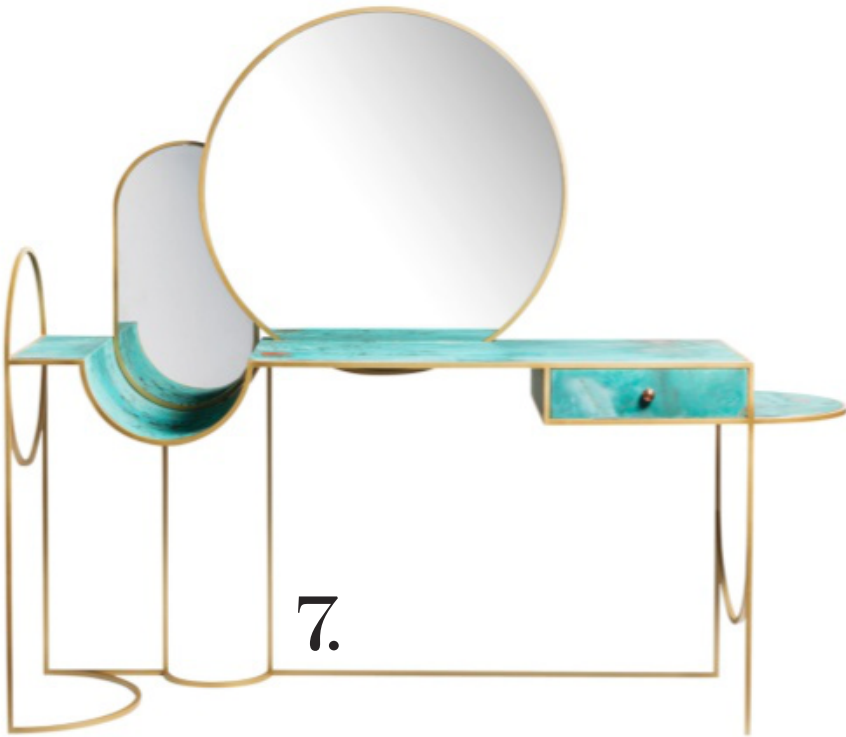
“Every dressing area needs **two things**: perfectly balanced lighting and a comfortable chair.”

BULLARD

9.



7.



8.



“My favorite type of vanity is one that can **multitask**—a total command center.”

CULLMAN

10.



6.
GLAS ITALIA
ETRUSCO
VANITY

47" w. x 17.5" d. x 80.5" h.,
\$8,770.
glasitalia.com

7.
BOHINC STUDIO
CELESTE
CONSOLE

69" w. x 17.5" d. x 58" h.,
\$18,260.
bohincstudio.com

8.
MICHAEL AMINI
& JANE SEYMOUR
HOLLYWOOD
SWANK VANITY

56" w. x 19" d. x 78.5" h., price
upon request. amini.com

9.
PINEL & PINEL
BEAUTY
TRUNK

Custom sizes available,
price upon request.
pineletpinel.com

10.
SOANE RATTAN
BROADWAY
DRESSING TABLE

48" w. x 21.5" d. x 55.5" h.,
\$6,125.
soane.com

MARTIN AND BULLARD PORTRAITS: GETTY IMAGES

آموزشگاه انعکاس منبع جدیدترین اطلاعات ، مقالات و دوره های آموزشی دکوراسیون داخلی

Enekas.Academy

Enekas.Academy



THE
SHADE
STORE

custom made simple.*

CUSTOM SHADES, BLINDS & DRAPERY

HANDCRAFTED IN THE USA SINCE 1946. NATIONWIDE MEASURE & INSTALL SERVICES.
ALL PRODUCTS SHIP IN 10 DAYS OR LESS.

آموزشگاه انعکاس منبع جدیدترین اطلاعات، مقالات و دوره‌های آموزشی دکوراسیون داخلی

 Enekas.Academy

 Enekas.Academy



DESIGN FOR THE FASHIONABLE LIFE

STYLE



SHOWCASE

Piece Signs

THE FINE ART OF
MOSAIC WORK IS
ON ELEGANT DISPLAY
IN THESE NEW
WATCHES FROM
HARRY WINSTON.

BY VANESSA LAWRENCE
PRODUCED BY PARKER BOWIE LARSON

Premier Precious Micromosaic
Automatic timepiece in 18-karat
rose gold with diamonds and glass
tesserae in brown, nude, and white, price
upon request. Background: Truman
mosaic in Tortoise Shell jewel glass by
New Ravenna; newravenna.com.

آموزشگاه انعکاس منبع جدیدترین اطلاعات، مقالات و دوره‌های آموزشی دکوراسیون داخلی

 Enekas.Academy

 Enekas.Academy





CLOCKWISE FROM TOP LEFT: Premier Precious Micromosaic Automatic timepiece in 18-karat white gold with diamonds and glass tesserae in turquoise, blue, and white. Premier Precious Peacock Automatic timepiece in 18-karat white gold with diamonds and sapphires and glass tesserae in blue, green, and turquoise. A work in progress. Premier Precious Micromosaic Automatic timepiece in 18-karat rose gold with diamonds and glass tesserae in red, pink, and white; all prices upon request. The creation of a design.



HOME TO NO FEWER THAN EIGHT EARLY CHRISTIAN UNESCO-designated monuments, the city of Ravenna in northeastern Italy is the unofficial international seat of the art of mosaics. It was the capital of both the Western Roman Empire and of Byzantine Italy in the fifth and sixth centuries, and as such, the glasswork techniques of these cultures flourished there. Among the examples of exquisite craftsmanship at this UNESCO World Heritage Site are the Arian Baptistery and its golden rendering of Christ and the Apostles, and a circa-547 portrait of the Eastern Roman Emperor Justinian I in the Basilica of San Vitale.

While created far more recently—and sans religious iconography—the decorative faces of Harry Winston's new Premier Precious Micromosaic and Peacock Automatic collections of timepieces also hail from this same Italian artistic heritage. Made by artisans in Ravenna, they require a meticulous process: Colored glass blocks are heated and mixed to achieve an ideal hue; the hot glass is formed into thin rods, and small pieces are cut from the cool glass and painstakingly applied with tweezers to the watches' 18-karat-gold bases. Fortunately, the final geometric designs, offset by dials encrusted in diamonds, rubies, and sapphires, are protected by an antireflective sapphire-crystal-glass layer—no UNESCO intervention required. harrywinston.com ■

Skis double as sun beds in this 1950s photograph by Slim Aarons, taken at Cranmore Mountain Resort, in New Hampshire.



Piste PERFECT

HIT THE SLOPES IN HIGH FASHION, THEN CHILL OUT IN A CHALET FURNISHED WITH THE LATEST IN **APRÈS-SKI DECOR**—FROM AN ANTLER CHANDELIER TO A SHEEPSKIN-CLAD BED.

PRODUCED BY PARKER BOWIE LARSON

SLIM AARONS/GETTY IMAGES



LIAIGRE

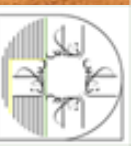


NOMAD SHOWROOM 102 MADISON AVE NEW YORK, NY 10016
NEW YORK UES TOWNHOUSE 34 EAST 61ST STREET NEW YORK, NY 10065 NYC@LIAIGRE.US
MIAMI SHOWROOM 137 NE 40TH STREET MIAMI, FL 33137 MIA@LIAIGRE.US

آموزشگاه انعکاس منبع جدیدترین اطلاعات ، مقالات و دوره‌های آموزشی دکوراسیون داخلی

 Enekas.Academy

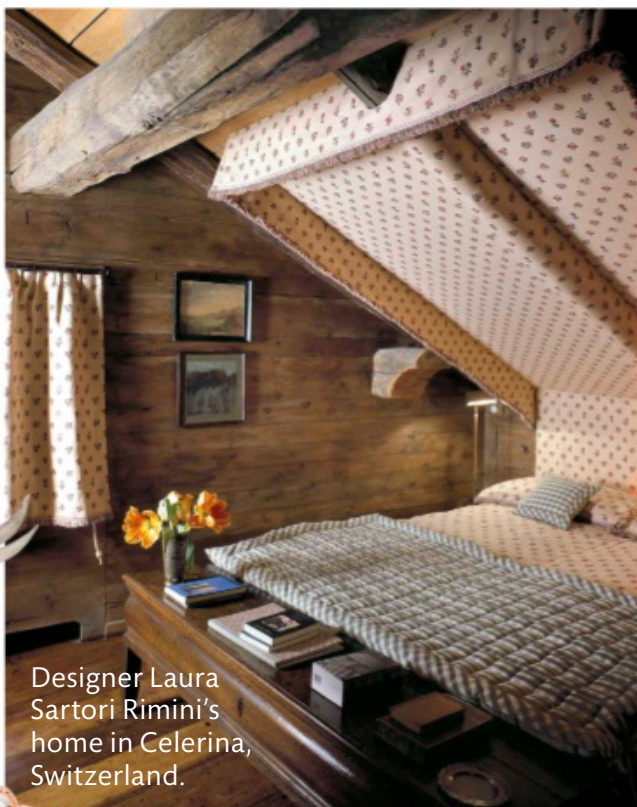
 Enekas.Academy



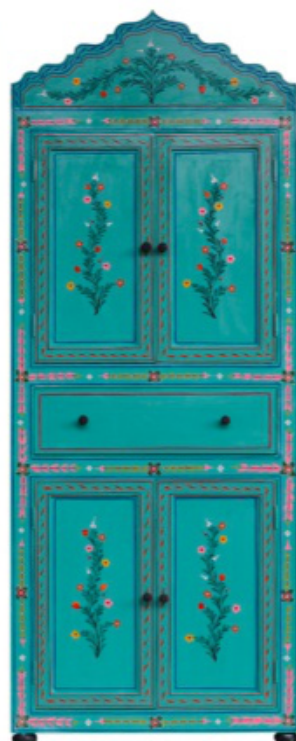
STYLE MOOD BOARD



Natural Antler chandelier in Sunbleached, \$2,621. rhskihouse.com



Designer Laura Sartori Rimini's home in Celerina, Switzerland.



Emery & Cie En Fleurs cabinet, \$1,000. emeryetcie.com



Dennis Basso Quilted Trooper hat, from \$900. dennisbasso.com



Bulgari Monete bracelet, \$35,600. bulgari.com

A fondue picnic for skiers in 1967 at Snowmass-at-Aspen, Colorado, photographed by Slim Aarons.

Bomber Ski Keith Haring Angel Wing 78 skis, \$2,500. bomberski.com



RH, Restoration Hardware Belvedere Teak lounge chairs, \$1,196 each, and Ixtapa Round fire table, from \$3,746. rhskihouse.com



Aerin x Williams Sonoma Alpine napkin, \$60 for four. williams-sonoma.com

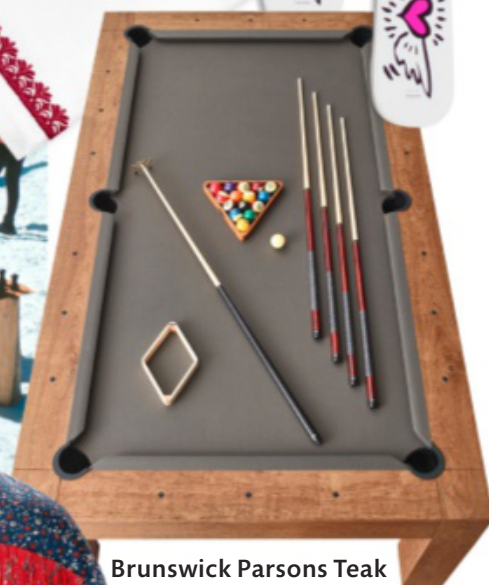


Fendi Spike-Stud and FF Jacquard Strap ski goggles, \$590. matchesfashion.com



Ralph Lauren Home Gwyneth dinner plate, \$46. ralphlaurenhome.com

Moncler Orbeillaz puffer jacket in Multi-color, \$2,845. shop.moncler.com



Brunswick Parsons Teak billiard table, \$11,621. rhskihouse.com



Gorsuch Crystal Skier vase in Blue, \$798. gorsuch.com



Yeti Sheepskin bed, from \$7,646. rhskihouse.com



Soren Hair-on-Hide chair in Camel with Brushed Brown Oak finish, \$1,571. rhskihouse.com

SNOWMASS-AT-ASPEN: SLIM AARONS/GETTY IMAGES; INTERIOR: COURTESY OF STUDIO PEREGALLI

آموزشگاه انعکاس منبع جدیدترین اطلاعات، مقالات و دوره‌های آموزشی دکوراسیون داخلی

Enekas.Academy

Enekas.Academy

LOVE.
JOY.
BLISS.

DESIGN PROFESSIONALS:

JOIN OUR TO THE TRADE
PROGRAM AND RECEIVE
AMAZING BENEFITS.

UniversalFurniture.com/JoinToTheTrade



As someone who loves the sanctuary of being at home, it has been a dream of mine to create my own collection of furniture that not only is aesthetically pleasing but that also promotes a warm, positive, loving energy. So many of the small, daily moments of my own life served as inspiration for this collection – I hope you love it as much as I do.

Miranda Kerr
xxx

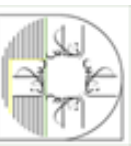
MIRANDA KERR

UniversalFurniture.com/MirandaKerrHome

آموزشگاه انعکاس منبع جدیدترین اطلاعات، مقالات و دوره‌های آموزشی دکوراسیون داخلی

 Enekas.Academy

 Enekas.Academy





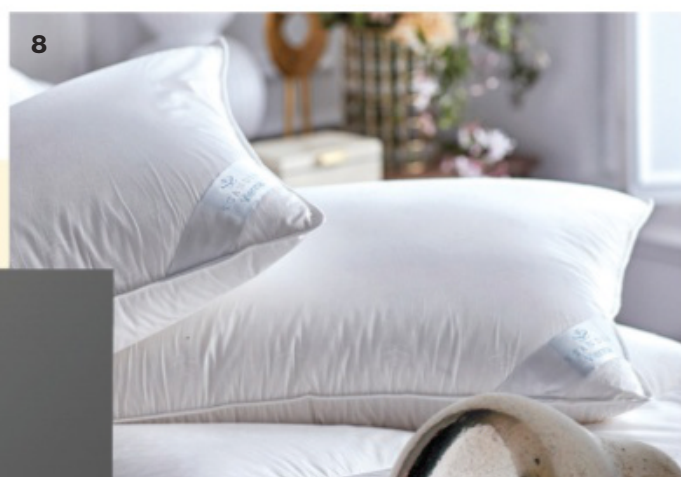
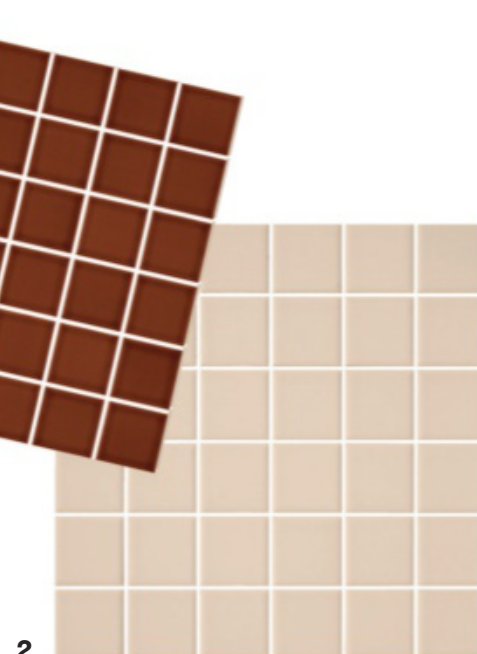
L.A. RESIDENTELLE

Throughout 2019, ELLE DECOR partnered with actress and activist, Sophia Bush (*center*), on the renovation of her historic 1950's Bungalow in Los Angeles. Explore the project, designed by Jake Alexander Arnold (*left*) and constructed by contractor Orie Prince (*right*), from renovation to reveal on **elledecor.com**.

FACING PAGE, CLOCKWISE FROM TOP LEFT: 1. The Laren closet system, in Flint, from The Container Store for the master bedroom. 2. Tiles in Sienna and Blush from The Tile Shop Imperial Collection for the master and guest bathrooms. 3. Aluminum Thermally Controlled Multi Slide Doors by LaCantina. 4. Jason Wu for Brizo Two-Handle Wall-Mount Lavatory Faucet and Solna Pull-Down Kitchen Faucet from Brizo. 5. Bowman 6-inch Outdoor Wall Sconce from Circa Lighting. 6. Caesarstone in Fresh Concrete for countertops. 7. Dacor's 36-inch Built-in French Door Refrigerator and 36-inch Pro Gas Range in Graphite Stainless Steel. 8. Scandia Home down pillows. 9. Mushroom cabinet knobs from Rocky Mountain Hardware.



Sophia's Shopping List





1 **Café de la Poste**
It's in this simple, beautiful village in Provence, France, where I have a home. I leave my own jar of marmalade there so I can have it with breakfast.



2

H.R. Higgins Tea
They have hundreds of fabulous teas in gorgeous cans in this old wooden London shop. I always buy tons.
hrhiggins.co.uk

3



Her Grandson, Ezio
He is 12 and lives in New York. And he's a very good artist. His drawings are contemporary and unusual. When he visits me in Provence, we draw together.



4 **La Fromagerie**
The best lemon cake in the world is from this place in London. When my sister and I go there, we'll get one slice because it's very rich.
lafromagerie.co.uk



Rose Tarlow.

Rose Tarlow AND **EIGHT THINGS** SHE CAN'T LIVE WITHOUT.

BY VANESSA LAWRENCE

Looking in from the outside on a design business with decades of successful longevity, it's tempting to imagine the immense planning and premeditation that went into its creation. Rose Tarlow easily dismisses this idea when asked how she transformed the small antiques store she opened on Melrose Place in Los Angeles in 1976 into a global brand offering furniture, fabrics, and accessories. "I never had any intention of it being anything," Tarlow says. "And I still feel that way."

Tarlow was in her early 20s when her now ex-husband suggested she open a shop devoted to her passion for antiques. A few years later, she began designing her own pieces at the request of customers, and the creations took off. In addition to her interiors line, Tarlow crafts homes for extremely select names, including Oprah Winfrey, David Geffen, and Edythe and Eli Broad. This spring, she will open a new flagship on Robertson Boulevard in Los Angeles, where her more recent contemporary creations will commingle with the antiques she continues to scout for her store.

"When I was starting out, I bought very serious antiques. These pieces are more casual—they are things that have character and make the shop look great," Tarlow says. "They're a little more fun."

rosetarlow.com



5

Woven Baskets

I have never met a finely woven basket I could walk away from—I must have been a tree in another life. I have a preoccupation with a marvelous patina.



Antique Tools

Over the years, I've collected hundreds of serving pieces. This saw was a gift from my old friend Bill Blass. He was one of my first clients when I came to California.

7



Santa Maria Novella

I have played with every bath scent available, and my must is Santa Maria Novella Melograno. I give it as a gift all the time.
buy.smnovella.com



8

Hatchards

This London bookstore has been in Piccadilly for over 200 years. I've gone there my whole life, since I was 18. I have a huge library in every house—I love to read.
hatchards.co.uk

Designed & Built by Giuffo Cabinetry |
Styling by Elizabeth Dow | Photography by JJ Jetel



LEGENDARY KITCHENS START WITH LEGENDARY APPLIANCES

For those who believe the kitchen is a place to connect, entertain and create.

dacor

NEW YORK | CHICAGO | LOS ANGELES | SEOUL

آموزشگاه انعکاس منبع جدیدترین اطلاعات ، مقالات و دوره‌های آموزشی دکوراسیون داخلی

 Enekas.Academy

 Enekas.Academy



White
Bronze
High
Polished



ROCKY MOUNTAIN
H A R D W A R E

آموزشگاه انعکاس منبع جدیدترین اطلاعات، مقالات و دوره‌های آموزشی دکوراسیون داخلی

 Enekas.Academy

 Enekas.Academy



INSPIRATION FOR YOUR RENOVATION

BUILDER

TOOLBOX

Fired Up

A NEW GENERATION OF **TILE OPTIONS** IS SHAKING UP THIS ANCIENT ART FORM WITH COLOR, PATTERN, AND TEXTURE.

BY TIM McKEOUGH
PRODUCED BY LAUREL J. BENEDUM

CERAMIC TILE HAS A SPLIT personality. On one hand, it is a product of utilitarian performance—a hard-wearing, impervious, hygienic surface that has become the cladding of choice for the most demanding environments, from hospitals to subway tunnels, public restrooms to prisons. On the other, it is an artistic product of the highest order, one that has communicated stories of culture, artistic achievement, and decorative flair for centuries.

Over the last decade, the utilitarian aspects of tile appeared to win out, as plain white subway tiles became de rigueur in kitchens and bathrooms. But the functionalist reign is coming to an end. Tile trends are now moving in a maximalist direction as designers ▶

Tiles from Ann Sacks, Balineum, Fornace Brioni, Popham Design, Sister Parish x Country Floors, and the Tile Shop. For individual tile names, see Resources.

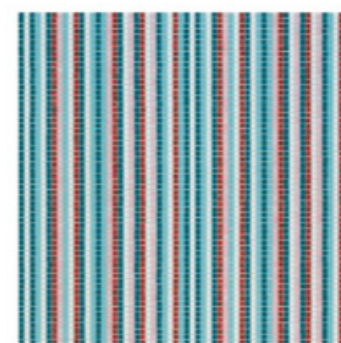
BUILDER TOOLBOX

and manufacturers embrace more creative designs once again.

“I see a wave of people going for pattern, color, and even different textures,” says designer Nicole Fuller, whose Whimsy collection of boldly geometric terrazzo tiles for Ann Sacks was inspired by 20th-century art. “Clients are now saying, ‘Let me see that tile with the pale pink, yellow, and gray.’ It’s a really exciting time.”

British designer Beata Heuman has also been experimenting with statement tile. “People are quite formulaic in how they design bathrooms, so it’s easy to create character with something playful and unexpected,” she says. “It’s such a great way of adding personality.”

The rise of room-defining tile may feel like a long time coming, but it is actually the material’s return to form. “Throughout history, there’s always been a love of color and love of detail,” says Terry Bloxham, assistant curator of ceramics and glass at the Victoria and Albert Museum in London, who recently wrote *The Tile Book* (Thames & Hudson), a tome exploring the lavish ceramic items produced from the 13th century to the present day. “We’re no different from our ancestors.”



LEFT: The mosaic floor of a kitchen and dining room by Spanish designer Patricia Bustos gives off major Almodóvar vibes. **ABOVE:** Marco Braga Stripes Winter mosaic tile, \$110 per sq. ft.; bisazza.it. **BELOW:** Majolica tile creates a dramatic stairwell in a home in Ischia, Italy, designed by Giuliano Andrea dell’Uva.

Today, however, the range of ceramic options is broader than ever, thanks to the blossoming of small-scale makers as well as new technology that is allowing established manufacturers to invent tiles that weren’t previously possible.

“Technological advances have had a huge impact,” says Luke Crownover, product manager at the Tile Shop, pointing to high-definition printing, which can give ceramic the look of marble or wood; metallic glazes; high-polish finishes; and manufacturing capabilities that allow for the creation of deeply textural three-dimensional tile. “We’ve taken the next step forward, and all the manufacturers are just playing with the technology to see what they can do.”

Dazzling tiles are also turning up in places beyond bathrooms, kitchens, and mudrooms. Fuller has installed mosaic murals—depicting birds, butterflies, and branches—on walls around fireplaces and in dressing rooms. “I’m defining spaces with patterned tile, where it becomes more of an artistic piece,” she says.

Even in rooms that call for slightly more subdued ceramics, designers are bypassing basic white tile in favor of options that offer nuanced color and texture. Martin Brudnizki,

for instance, clad some walls of Pink Mamma restaurant in Paris with green rectangular tile in varying sizes and shades. “The older a tile looks, the better it feels, so we used different shades of green,” he says. “It creates an aged look with an extra layer of patina.”

That’s a well-understood concept for Robin Standefer and Stephen Alesch of Roman and Williams, who have long been masters of designing new spaces with an immediate sense of history. “Too often, tile is made to look synthetic, when its natural characteristics and glaze are its greatest assets,” Alesch says. “We let the variation, the technique of firing, and the material speak loudly.”

Sometimes, that mind-set produces interiors with installations of simple tiles that have just enough color and texture to stand out from the crowd. Other times, it results in something wildly original, like an abstract tile-based mural behind the bar at Chicago’s Café Integral or showers lined with blue-and-white oceanic scenes recalling Portuguese azulejos at Greydon House, a boutique hotel on Nantucket. Traditional Portuguese tile “told stories of trade, travel, and exploration,” Standefer notes. “The showers at Greydon House are so intimate, you feel like you’re out at sea.” ■

TOP: NACHO URIBE SALAZAR; BOTTOM: MATTHIEU SALVAING

Extremely Handmade by Tufenkian.

TUFENKIAN
ARTISAN CARPETS



LUMINANCE | RUSTY SLATE

Every rug we sell makes a difference.
EXPLORE THE PROJECTS TUFENKIAN FUNDS AT [Tufenkian.com/foundation](https://tufenkian.com/foundation)



آموزشگاه انعکاس منبع جدیدترین اطلاعات ، مقالات و دوره های آموزشی دکوراسیون داخلی

 Eneka.Academy

 Eneka.Academy



Tile One On

THESE **STATEMENT ROOMS** MAKE A COLORFUL CASE FOR GOING BEYOND BASIC WHITE.

PRODUCED BY LAUREL J. BENEDUM



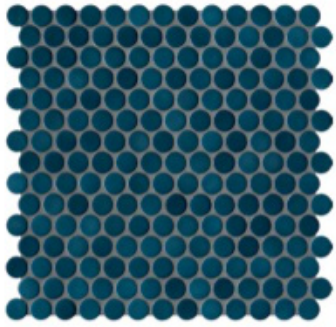
Delft Influence

Floor-to-ceiling Dutch earthenware in a kitchen designed by Rhoda Burley Payne proves that blue and white never goes out of style. Get the look with Ruan Hoffmann Plant Delft tile, \$64 per sq. ft. cletile.com



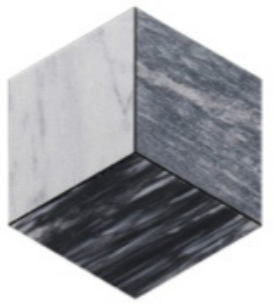
Moor Is More

Traditional Moroccan *zellige* tiles bring pattern to this master bath by Commune Design. Get the look with Santos cement tile, \$105 for 12. growhousegrow.com



Penny Wise

The walls of Jonathan Adler and Simon Doonan's New York bathroom are anything but basic and clad in cobalt penny tiles. Get the look with Nautilus ceramic penny tile, \$23 per sq. ft. waterworks.com



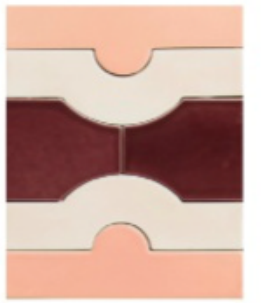
Neo Geo

Diamond-pattern black-and-white floors imbue old-world elegance into this study designed by Lorenzo Castillo. Get the look with Catia Cube Mosaic tile, from \$30 per sq. ft. annsacks.com



Free Forms

Abstract tiles add a dose of whimsy to this master bath designed by Caitlin and Samuel Dowe-Sandes of Popham Design. Get the look with Fruit Salad cement hex tile, \$200 for 12. jujupapers.com



Viva Retro

Seductive shades of red and pink in a bathroom designed by Julia Rouzaud recall classic 1940s glamour. Get the look with Cristina Celestino Scenografica Trionfo clay tile, \$389 per sq. m. fornacebrioni.it

CLOCKWISE FROM TOP RIGHT: DOMINIQUE VORILLON; RICARDO LABOUGLE; ROMAIN RICARD; RICHARD POWERS; DOUGLAS FRIEDMAN; JAMES MERRELL





FERGUSON
Bath, Kitchen & Lighting Gallery

DuraSquare. Striking. Precise. Rectangular.

The sleek, precise ceramic edges of the DuraSquare bathroom series are a perfect match for the XSquare furniture collection by Kurt Merki Jr. Handle-free drawer fronts, striking chrome profiles and 28 furniture finishes enable countless unique bathroom design options. Coordinating mirrors feature a touch-free control panel for de-fogging, light and dimming functions. Now available at the following locations: **Atlanta** 770-442-1800, **Austin** 512-382-2032, **Boston** 781-592-1200, **Chicago** 630-916-8560, **Dallas** 214-761-9333, **Ft. Lauderdale** 954-567-3110, **Houston** 713-626-3300, **King of Prussia** 610-337-8856, **Las Vegas** 702-368-2284, **Los Angeles** 310-829-1062, **New York** 212-688-5990, **San Diego** 858-974-5100, **San Francisco** 415-551-3580, **Seattle** 206-505-0980, **Washington DC** 202-567-5656. www.duravit.us





L'ATELIER

PARIS
HAUTE DESIGN



THE ART, CRAFTSMANSHIP & EXCELLENCE OF HAUTE CUISINE

HANDCRAFTED COOKING RANGES & SUITES, STEEL CABINETRY, FINE WOOD WORKING & APPLIANCES

PARIS • NEW YORK • MIAMI • LOS ANGELES

آموزشگاه انعکاس منبع جدیدترین اطلاعات، مقالات و دوره‌های آموزشی دکوراسیون داخلی

 Eneka.Academy

 Eneka.Academy



FOOD, HOTELS, TRAVEL, ENTERTAINING

LIVING

DANIEL'S KITCHENS

TO FEED AN ARMY

HOSTING A GARRISON OF DINNER GUESTS? CONSIDER **PAELLA** YOUR SECRET WEAPON.

BY DANIEL BOULUD
PRODUCED BY ADAM SACHS
PHOTOGRAPHS BY DAVID PRINCE
STYLED BY LAUREL J. BENEDUM

THE BEST PAELLA I'VE EVER HAD was one my friend Eric Ripert, the co-owner and chef of Le Bernardin, and I made together. It's not every night you have the chef of a three-Michelin-star restaurant preparing a paella for you, so it was very special. Eric is well known among friends for his paella-cooking skills. He grew up in Andorra, an ►

Spanish *carabineros* shrimp top a paella prepared in a Staub pan. The tea towel is by Heather Taylor Home.

independent principality situated between France and Spain, and has a natural familiarity with the cuisine of both of these neighbors. His paella included a bit of everything—chicken, mussels, garlic, saffron, and delicious Spanish shrimp. The rice was just perfect—caramelized and crunchy on the bottom, but not burned. As Eric says, paella is the most convivial dish to cook: Dinner guests can pitch in to help—or just have a drink and enjoy watching the action.

I suggest getting bright red *carabineros* shrimp to mix with the mussels and chorizo. (If you can't find them locally, Browne Trading Company sells them.) To feed an army, you'll need a big, shallow pan. Don't give in to the temptation of stirring the rice after adding the stock, as this can lead to a mushy, overcooked texture.

“Paella is the most convivial dish to cook.”



With a traditional paella pan, you really need a fire. My favorite way to cook the dish is over a bundle of aged grapevines, which produce a brief but furiously hot fire for the 15 minutes or so required to create the *soccarat*—the tasty, chewy, crispy bits of well-cooked rice at the bottom of the pan.

My nephew married a woman from Valencia, the home of paella, so now I like to claim my own connection to the dish. With this recipe, I hope to honor the Spanish tradition; the result may not be totally authentic, but I always have fun making it. The beauty of paella is that it's so simple, yet endlessly complex. It's luxurious and homey, too, in that you use the best seafood *and* can eat it from the pan at the table, with your legion of satisfied guests circling back for seconds. I think Eric Ripert would agree. ■



DANIEL'S PAELLA SERVES 6

FOR THE STOCK

- 3 cups chicken stock
- 2 pinches saffron
- 1 tsp. smoked paprika

FOR THE PAELLA

- 1/3 cup Spanish hot dry chorizo, cut into 1/2-inch dice
- 1/4 cup extra-virgin olive oil
- 4 boneless, skinless chicken thighs, cut into 1-inch dice
- 1 Spanish onion, cut into 1/2-inch dice
- 1 red pepper, peeled and sliced in 1/2-inch strips
- 1 yellow pepper, peeled and sliced in 1/2-inch strips
- 1 1/2 cups bomba rice

- 2 T tomato paste
- 2 T garlic, chopped
- 1/2 cup sherry or white wine
- 1/2 lb. green beans, blanched and cut into thirds
- 12 large shrimp, peeled and deveined, seasoned with salt, olive oil, and chile flakes
- 24 mussels or clams
- Salt, freshly ground pepper, and chile flakes to taste
- 1/4 bunch of parsley leaves, roughly chopped
- 2 lemons, cut into wedges

1. Preheat the oven to 425°F. In a medium saucepan over medium heat, combine the chicken stock,

saffron, and smoked paprika. Simmer for 5 to 10 minutes while the spices infuse.

2. Using a 14- or 16-inch paella pan on medium-high heat, add the chorizo and a teaspoon of olive oil to render the fat. Once the chorizo is cooked (about 3 minutes), remove it from the pan and set aside, leaving the oil behind. Add the chicken, allowing it to brown slightly, then remove it from the pan and set aside.

3. Add 3 tablespoons of the olive oil to the pan. When the oil is hot, add the onion and peppers. Cook until they are tender (about 8 minutes), stirring often. Then toss in the rice and toast it for 2 minutes. Add in the tomato paste and chopped garlic. Cook for an additional 2 minutes, then deglaze the pan with the sherry or wine. Cook the rice until almost all of the sherry or wine has evaporated, then cover with the infused chicken stock. Season with salt and bring the liquid up to a simmer. Toss in the chicken and chorizo and stir to incorporate. Tightly cover the pan with aluminum foil.

4. Place the paella on the bottom rack of the oven and cook for 15 to 20 minutes, or until the rice has absorbed all of the stock. Remove the aluminum foil and sprinkle the blanched green beans on top of the paella. Place the seasoned shrimp around



WHAT TO DRINK

“Paella is best served with a refreshing wine. From Spain, there's Bernardo Estevez's Chanselus Blanco 2015 [\$45], a briny blend from Galicia. For something French, I like Bernard Baudry's Chinon Rosé 2018 [\$23], a floral rosé from the Loire Valley.”

—Raj Vaidya, head sommelier, Daniel

the rim of the pan, spaced evenly. Alternating with the shrimp, put the mussels hinge-side down into the rice, so they stick up. Rotate the pan completely to ensure even cooking, cover it tightly with aluminum foil, and return it to the oven for an additional 6 minutes.

5. Once the shrimp are fully cooked and the mussel shells have opened, turn off the heat, season with salt, pepper, and chile flakes, sprinkle the parsley over the top, and garnish with lemon wedges.



FLOWER POWER WALLPAPER - RENDEZ-VOUS & DOLCE LINO FABRICS

ÉLITIS

Auteur & Éditeur.

آموزشگاه انعکاس منبع جدیدترین اطلاعات، مقالات و دوره‌های آموزشی دکوراسیون داخلی

 Enekas.Academy

 Enekas.Academy



See you Arrivederci

21_26.04.2020



Salone
del Mobile.
Milano

Fiera Milano, Rho

Salone Internazionale
del Mobile
EuroCucina
FTK, *Technology For the Kitchen*
International Bathroom
Exhibition

S.Project
Workplace3.0
International Furnishing
Accessories Exhibition
SaloneSatellite



fieramilano

salonemilano.it

آموزشگاه انعکاس منبع جدیدترین اطلاعات ، مقالات و دوره‌های آموزشی دکوراسیون داخلی

Enekas.Academy

Enekas.Academy



CRÉATIONS DES XX^e ET XXI^e SIÈCLES

SPECIAL ORDERS RESERVED TO INTERIOR DESIGNERS, UNIQUE PIECES AND LIMITED SERIES

www.glustin.net



GLUSTIN
PARIS

Instagram: @galerieglustin
140 rue des Rosiers 93400 Saint-Ouen (Paris) – glustin@wanadoo.fr
Opening Saturday, Sunday, Monday and upon appointment

Studio Glustin / Noble materials: piece of furniture in amber, bronze and alabaster scone, brass chandelier, velvet mohair armchairs

آموزشگاه انعکاس منبع جدیدترین اطلاعات، مقالات و دوره‌های آموزشی دکوراسیون داخلی

 **Eneka.Academy**

 **Eneka.Academy**





CARLISLE & CO.™

WALLCOVERINGS

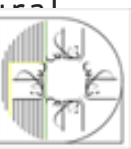


Mineral Mica Mural

آموزشگاه انعکاس منبع جدیدترین اطلاعات، مقالات و دوره‌های آموزشی دکوراسیون داخلی

 Enekas.Academy

 Enekas.Academy





LIMA COLLECTION BY HENRIK PEDERSEN

LOS ANGELES · CHICAGO · MIAMI · DANIA BEACH · NEW YORK FLAGSHIP

WWW.GLOSTER.COM



آموزشگاه انعکاس منبع جدیدترین اطلاعات ، مقالات و دوره‌های آموزشی دکوراسیون داخلی

 Enekas.Academy

 Enekas.Academy





Light Your Life

DENMARK 49338-91



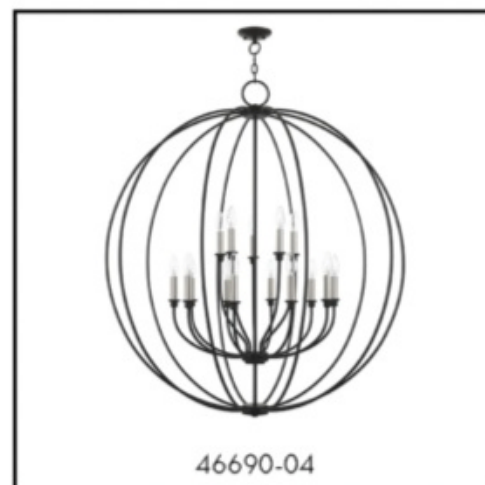
46214-91

INDOOR



22382-04

OUTDOOR



46690-04

EXTRAORDINARY

LIVEX®
— LIGHTING —

  / livexlighting

آموزشگاه انعکاس منبع جدیدترین اطلاعات، مقالات و دوره‌های آموزشی دکوراسیون داخلی

 Enekas.Academy

 Enekas.Academy



PALECEK®

SAN FRANCISCO LOS ANGELES LAGUNA NIGUEL LAS VEGAS DALLAS ATLANTA HIGH POINT NEW YORK



FURNITURE • LIGHTING • ACCESSORIES • OUTDOOR • C.O.M • TO-THE-TRADE • HOSPITALITY

آموزشگاه انعکاس منبع جدیدترین اطلاعات ، مقالات و دوره‌های آموزشی دکوراسیون داخلی

 Enekas.Academy

 Enekas.Academy



SUPER Natural

A BOUNTIFUL NEW
COLLECTION FROM
HERMÈS IS FIT FOR A
PISCES DREAMER.

BY VANESSA LAWRENCE
PRODUCED BY PARKER BOWIE LARSON
PHOTOGRAPH BY ALLIE HOLLOWAY



BOTANICAL MOTIFS ARE a common decorative flourish in most table-settings, whether as a pattern on dishes or in a statement centerpiece. In the hands of a Pisces (February 19–March 20) host, however, an injection of nature into a tableau becomes an immersive experience. A water sign ruled by Neptune, Pisces is known to be deeply intuitive and artistically explorative. Fortunately, the new Passifolia tabletop collection from Hermès affords multiple options for creative expression. “Since the theme is tropical, the idea was to portray the abundance of plants and foliage and the richness of the floral world, all intricately intermingled,” says Benoît-Pierre Emery, the creative director of La Table Hermès. As such, the French house turned to artist Nathalie Rolland-Huckel to illustrate the vibrance of nature in hyperrealistic detail. In her vivid designs, a teacup and saucer might be covered in a dense thicket of vegetation, while a dinner plate could feature a single delicate palm frond. “I worked almost intuitively in my studio, surrounded by dozens of plants and hundreds of photographs, without a predefined composition,” says Rolland-Huckel. “The important thing was to transpose, with the greatest of care, the beauty and diversity of this almost magical natural world.” [hermes.com](https://www.hermes.com) ■

CLOCKWISE FROM TOP LEFT: Passifolia tart platter, \$510; dinner plates, in Philodendron and Palm, \$240 each; dessert plate, in Passiflora, \$165; bread and butter plates, in Tamaya and Kalos, \$130 each; presentation plate, \$360; breakfast cup and saucer, \$370; and teapot, \$825. Grand Attelage flatware by Hermès, from \$330 per piece. Saint-Louis Bubbles Champagne flute, \$240. Saint-Louis Folia regular tumbler, \$129. Saint-Louis Folia small candlestick, \$126. Hermès Maîtres de la Forêt Mosaïque fabric in Jade and Cascade fabric in Emeraude, prices upon request. Floral centerpiece by East Olivia. Reéditions J.-M. Frank table for Hermès, \$14,700. For details, see Resources.





ONE TREE HILLS

ACTRESS AND ACTIVIST **SOPHIA BUSH** RENOVATES A MIDCENTURY HOME IN HOLLYWOOD FROM TOP TO BOTTOM.

BY CHARLES CURKIN

PRODUCED BY ANITA SARSIDI

PHOTOGRAPHS BY TREVOR TONDRO

FASHION STYLISTS: BRIT + KARA; HAIR: DAVID GARDNER; MAKEUP: SPENCER BARNES

آموزشگاه انعکاس منبع جدیدترین اطلاعات، مقالات و دوره‌های آموزشی دکوراسیون داخلی

 Enekas.Academy

 Enekas.Academy



Sophia Bush outside her 1950s modernist home in the Hollywood Hills. Bush collaborated with interior designer Jake Alexander Arnold and contractor Orie Prince on the renovation. Landscape designer John Alden Sharp installed cacti that are native to California. **OPPOSITE:** In the dining area, the vintage furnishings include a Knoll table, Bertoia chairs with cushions in a Zak+Fox fabric, and a Doris Leslie Blau rug.



IT MUST BE WRITTEN SOMEWHERE THAT TO LIVE ONE'S best life in and around Los Angeles, one must first find the perfect modernist house. It's an axiom that TV star Sophia Bush is adhering to, having just lovingly renovated a 1,600-square-foot 1950s bungalow in the Hollywood Hills. "Restoring this house and bringing it back to its midcentury splendor has been such a joy," she says.

The house is next door to the home she resides in, making it a familiar setting for the star of the early-aughts teen drama *One Tree Hill* and the upcoming Disney+ series *Love, Simon*. Her former neighbors had purchased the land in the 1950s and built the house for themselves, which, for her, gave the property an added feeling of authenticity and

familiarity. She simply had to have it, but to say that the place needed work would be an understatement.

Initially, Bush thought that she'd only have to decorate and lightly renovate her new home, but history and patina don't always equate to structural soundness. The foundation turned out to be uneven, and the plumbing needed updating. Bush realized she had her work cut out for her.

Luckily, she is not easily intimidated—as proven by her longtime activism for causes such as voting rights and gun control. Working in collaboration with ELLE DECOR, she enlisted interior designer Jake Alexander Arnold, landscaper John Alden Sharp, and contractor Orie Prince to help in what became an arduous, yearlong gut renovation. "Once



BELOW: The B&B Italia sectional in the living area is by Mario Bellini, and the artwork is by Paul Rusconi. The Eileen Gray side table, Arteluce floor lamp, and Eames screen are all vintage. **RIGHT, FROM TOP:** Bush cuts flowers in her kitchen, where the range is by Dacor and the cabinet pulls are by Rocky Mountain Hardware. The custom island is topped with Caesarstone's Fresh Concrete, the faucet is by Brizo, the bar stools are by Hay, and the pendant is by George Nelson.





ABOVE: In the master bath, the tub fittings are by Brizo, the towels are by Scandia Home, and the wall tiles are from the Tile Shop. The walls and ceiling are painted in a custom color by Portola Paints & Glazes. **ABOVE LEFT:** The guest bed is dressed with Scandia Home linens and Pat McGann decorative pillows, and the pendant is by Gubi. **LEFT:** The landscaping was inspired by Bush's trips to Marfa, Texas. The sconces are by Circa Lighting, and the doors are by LaCantina Doors. **OPPOSITE:** Bush turned a former guest room into her home office. The Knoll executive desk and Eames desk chair are vintage, the recycled terrazzo tile is from Nurazzo, and the walls are covered with cork. For details, see Resources.

I knew that we were looking at a teardown, we were able to begin envisioning a new flow for the space," she says.

Bush and Prince kept the original footprint of the house and left the guest rooms and guest bath in their original locations. But everything else about the home's layout was reimagined. Key to the new design was an open central core that encompasses an airy and connected living and dining area. The kitchen, which was shifted from the opposite end of the house, was outfitted with a dramatic 13-foot-long island the color of adobe bricks and topped with Caesarstone and a custom sink fitted with a Brizo faucet. There are new top-shelf appliances from Dacor; era-appropriate terrazzo tiles from Nurazzo cover the floor. Bush also added a powder room and created a master suite out of what was once a small bedroom and a back den. "It flows so naturally now," she says.

As it turns out, the project could not have come at a more opportune time. Last year, Bush launched her own design firm, Filles Des Rincón, with her friend Lauren McGrady. Bush's newly finished house is her first major achievement in her growing portfolio, and Hollywood A-listers are taking note. "What I love most about Sophia's home is that it is a reflection of her vibe," says the comedian Chelsea Handler, who is a longtime friend. "Sophia is earthy, down to get real, and an intelligent being who thinks and leads and shares and searches."

This is just the beginning for Sophia Bush, interior designer. This house is her proof of concept, one that she hopes will lead to a successful new career. "Everyone who's come to visit says they've never seen anything like it," she says. "And being here makes me feel incredibly grounded and creative. So it's working."

“What I love most about Sophia’s home is that it is a **reflection** of her vibe.”

CHELSEA HANDLER



PRESENTED BY

The Container Store®
CUSTOM CLOSETS



DESIGNING YOUR HOME FROM SCRATCH AFFORDS many possibilities—not least of which is the chance to install some impressive closets and custom storage systems. Just ask Sophia Bush, who turned to The Container Store for help when renovating her midcentury house in the Hollywood Hills. “What can I say? I love to organize,” Bush says.

For her office, where she keeps books, scripts, and recording equipment (the room doubles as a studio where she records her *Work in Progress* podcast), Bush chose the Elfa Décor line for its minimalist aesthetic and high

functionality. In the guest room, she installed the Avera line in the Dune finish, which features touch-activated drawers and dramatic back panels.

Lastly, for her master bedroom she chose Laren, The Container Store’s most luxurious closet line. “I wanted a wall of walnut cabinets in the style of midcentury homes that used veneer cabinetry,” she says. Six pairs of doors open up to hanging space for red-carpet gowns, drawers filled with T-shirts and jeans, and shelves for everything from stilettos to sneakers. Clearly, Bush not only has an aptitude for organization, but also an eye for great style. ■





ABOVE: For her master bedroom, Bush chose a midcentury walnut look with The Container Store's Laren closet system in the Flint finish. **RIGHT, FROM TOP:** Shoes, shirts, and bags arranged in the guest room's Avera closet. In Bush's office, books, scripts, and supplies are stored on the walnut shelves of the Elfa Décor closet.



Shop Sophia's Closet

Just a few of the accessories from The Container Store that Bush uses to stay organized.



Bigso Marten Organizer
\$20



Wooden Shirt Hangers
\$30 for 20



Woven Kiva Storage Bin
From \$10



Wit & Delight Concrete Pencil Cup & Bookend
\$15 for set of two



Pandan Shirt Box
\$30





In the gallery of an apartment on New York's Upper East Side that was designed by David Netto and the architect Gil P. Schafer, the custom console by Christopher Hodson is framed by a pair of mahogany Regency chairs and topped with lamps by Blackman Cruz and an artwork (left) by LeRoy Grannis. The mirror is by RH Modern, the ceiling fixture is by the Urban Electric Co., and the sconce is by Christian Liaigre. The wallpaper is by Pierre Frey, the custom runner is by Holland & Sherry, and the wall artworks are by Dewey Nicks (top left), Ralph Gibson (bottom left), and Rene Ricard (right).





UPTOWN SPUNK

HOW DO YOU BRING AN UPPER EAST SIDE PREWAR INTO THE MODERN AGE? DESIGNER **DAVID NETTO** SHARES HIS RECIPE FOR SUCCESS.

BY DAVID NETTO
PHOTOGRAPHS BY FRANCESCO LAGNESE

آموزشگاه انعکاس منبع جدیدترین اطلاعات، مقالات و دوره‌های آموزشی دکوراسیون داخلی

 Eneka.Academy

 Eneka.Academy







M

MANY OF US HAVE A FAVORITE BUILDING ON New York's Upper East Side—whether our reasons are based on aesthetics, history, or looking up while strolling and wishing we might one day live there ourselves. When I was about 10, my pick was a handsome Georgian building on Lexington in the high 60s. A classmate's family lived in a magnificent apartment

there, haphazardly furnished, with a fireplace in the empty front hall. I first saw it when we were turned away from a matinee of *The Jerk* (rated R) and went to his house to pretend to skateboard, sliding around on the parquet.

Cut to nearly four decades later and I am a grown-up decorator—who can get into any movie he wants—designing an apartment in this very same building. My collaborator is a longtime friend, the architect Gil P. Schafer, who is a master of sure-footed, elegant American classicism. I met Gil early in my career, and while we have worked together before, this was our first team project in an urban context.

It's all very nice for architects and designers to stand for something, but the clients are the characters driving the story. The narrative here is charming: A husband and wife, their children grown and gone, plan to trade their apartment of almost 30 years for a loft, then realize they are too much in love with their

ABOVE: In the living room the sofa, in a Holland & Sherry linen horsehair, and the cocktail table are by Liz O'Brien Editions. The Louis XV chair from Gerald Bland is in a Jasper leather, the cane Marcel Breuer chair is from Bauhaus 2 Your House, and the tall bookcase is one of a pair designed by Albert Hadley. The dining table is by Rove Concepts, the table lamp is by Gregorius Pineo, and the painting is by Richard Serra. **OPPOSITE:** The hallway's wallpaper is by Studio Printworks, the jute carpet is by Beauvais Carpets, and the custom lacquered ceiling depicts the night sky. The diamond painting is by Kurt Pio.



CLOCKWISE FROM

ABOVE: The Eileen Gray chair in the den is from Ecart International, the wallcovering is by Nobilis, and the artworks are by Hugo Guinness (*top*) and Paddy Farrell. The living room's table lamps are by Jacques Adnet (*left*) and Gregorius Pineo, and the floor lamp is by Cedric Hartman. In the kitchen, the oven and hood are by Wolf, and the custom cabinetry has E.R. Butler & Co. hardware; the clock is from the MoMA Design Store. In the master bath, the custom Urban Archaeology vanity has Lefroy Brooks fittings; the flooring is Paonazzo marble from BAS Stone, and the walls are in Benjamin Moore's Dove Wing.

neighborhood to leave. That's when Gil and I got their call and were tasked with reviving their familiar uptown surroundings with a touch of downtown edge.

Our first line of attack was to reinvent the apartment's layout. The old plan ticked all the boxes—generous entrance gallery, fireplace in the living room. But it also had all the usual problems that you find in a 1920s apartment whose original occupants were accustomed to summoning their live-in staff by ringing a dinner bell. The kitchen was isolated. The relationship between the gallery and living room was about hierarchy and separation, not relaxation and flow. All of the bedrooms were the same size—and none of them were big enough to deliver any sense of decadence in the master.

I have watched over the years as half-height bookcases have transformed one spacious but bourgeois Park Avenue apartment after another into airy, expansive masterpieces

(note Grace Dudley's place at 550 Park Avenue and Oscar de la Renta's at 660 Park Avenue). We used this device here but reintroduced pairs of doors—in French-polished mahogany, no less—to invoke a little of the formality one expects in a classic building.

Color: Go in strong if you go at all. These clients were not afraid of bold hues, and we needed them to energize the deepest parts of the apartment, where there was little natural light. Pierre Frey made us the brown jungly wallpaper for the gallery (a kind of New York take on the banana-leaf pattern at the Beverly Hills Hotel). The kitchen is certainly as dramatic as anything that Gil or I have ever done. This is because we didn't do it—the homeowner did, and we helped her to achieve her dreams. I may have suggested dark lacquer, but she and my studio director, Lily Dierkes, came up with that very rich blue and the surprising colors of the linoleum floor.





آموزشگاه انعکاس منبع جدیدترین اطلاعات ، مقالات و دوره‌های آموزشی دکوراسیون داخلی





ABOVE: The master bedroom's custom bed is upholstered in a Sahco fabric and dressed with linens by Schweitzer Linen. The Mecox nightstands are topped with Collier Webb lamps, the Hans Wegner stools for Carl Hansen are from Design Within Reach, the side table is by Lawson-Fenning, and the curtains, wallcovering, and screen are of a Sahco fabric.

LEFT: In the guest bath, the fittings on the St. Thomas Creations sink and in the shower are by Newport Brass, the medicine cabinet is by RH, Restoration Hardware, and the shower tile is by Daltile. The room is painted in Benjamin Moore's Deep Royal.

What happens to great New York style? How does it move forward? If Gil Schafer doesn't know, then nobody does. As he explains, the goal with this project was to return the apartment to its good classical bones while thinking about them in a fresh way. "The most interesting conversation can be between opposite points of view," Gil says, "as long as both sides are listening and understanding."

After all those hours spent listening and planning, a real friendship developed. I still call this couple all the time to tell them a joke or talk about our children or insist that the wife watch *Succession* because Cherry Jones and the entire Pierce clan are clearly based on her family. We have even traveled together to Nantucket and Mexico City, laughing for days. Being a good decorator is not a job with a lot of boundaries, but I've learned that in order to do your best work, you have to care so much, you wouldn't dream of letting your client down. ■



The living room's Pierre Paulin chairs are from Artifort, the Hervé van der Straeten mirror is from Maison Gerard, and the raffia rug is by F.J. Hakimian. The custom Regency-style mantel is by Jamb, and the mahogany door was made by Laszlo Sallay. For details, see Resources.





PLAYING HOCKNEY

ART-WORLD POWER COUPLE **FAIRFAX DORN** AND **MARC GLIMCHER** UPEND A HAMPTONS SPEC HOUSE WITH DAZZLING DESIGN AND A-LIST ART FROM HIS PACE GALLERY.

BY HILARIE SHEETS

PRODUCED BY CYNTHIA FRANK

PHOTOGRAPHS BY LUKE WHITE



A corner of the living room in Fairfax Dorn and Marc Glimcher's vacation home in Sagaponack, New York, which she designed. A Lee Ufan painting hangs above a circa-1930 Oscar Nilsson console from Lief. The Kwangho Lee copper side table is from Salon 94 Design, and the artwork at right is by Elizabeth Murray. **OPPOSITE:** Dorn, wearing a Celine blouse, Gucci pants, and Hermès boots, in the living room in front of a painting by David Hockney, who is represented by Glimcher's Pace Gallery. The vintage Milo Baughman chairs for Thayer Coggin are in a Sandra Jordan fabric, the circa-1970 Jens Harald Quistgaard stool is from Galerie Half, and the Angelo Lelii chandelier is from Nilufar.

HAIR AND MAKEUP: KARINA MONTOYA

آموزشگاه انعکاس منبع جدیدترین اطلاعات ، مقالات و دوره‌های آموزشی دکوراسیون داخلی

 Enekas.Academy

 Enekas.Academy



M

MARC GLIMCHER AND FAIRFAX DORN, A PROMINENT ART-world couple with two highly developed aesthetics, never imagined they would be the kind of people who would buy a spec house. But when plans to build their own summer home in the Hamptons fell through in 2017, they decided to check out a newly developed 11-bedroom property in Sagaponack, New York, that Dorn had seen online.

"I just fell in love with it," says Glimcher, president and CEO of Pace Gallery. Pace was founded 60 years ago by his father, Arne, who put it on the map by persuading the sculptor Louise Nevelson to take a chance on an unknown gallerist. Working alongside his father for decades, the younger Glimcher is now leading the powerhouse gallery into the future with his multidisciplinary vision and a statement-making new eight-story global headquarters that opened last fall in Manhattan's Chelsea neighborhood.

At the time the couple toured the Sagaponack property, Glimcher was consumed in the gallery's building project, and the spec house seemed appealingly easy and finished. "There were sheets on the bed," Glimcher recalls. "I was like, 'We don't have to do a thing!'"

His wife saw it differently. "It was very tastefully done but felt a little soulless to me," says Dorn, who grew up near Corpus Christi, Texas; in 2003 she cofounded the eccentric arts space Ballroom Marfa, which brings contemporary art, music, performance, and film to the small Texas town that Donald Judd first made art-world famous in the 1970s with his installations at a former army base. She agreed that the house suited them but told her husband, "I think we need to make some changes."

Thus began Dorn's "intervention on a spec house," as she

RIGHT: Jennifer Shorto's Forbidden Fruit wallcovering sheathes the dining room, where an 18th-century Swedish table from Galerie Half is surrounded by 1950s dining chairs by Jean Touret from Almond & Co. The vintage René Gabriel sideboard from Alt for Living is topped with vintage Maurizio Tempestini lamps from Wyeth. The pendants are by CB2, and the custom bookcase is painted in Vardo by Farrow & Ball.







refers to it today. Her design collective, Fairfax Dorn Projects, took on the task. “With any house, your personality has to be a part of it,” she says.

“Fairfax is a master installer,” says Glimcher, who hired his wife’s team to select and place furniture in the executive offices of the new Pace building. “She has a very complete vision of what a place could look like,” he adds, joking that if he wants to install a show at the gallery or an art fair himself, he intentionally gives Dorn the wrong date or time.

For the Sagaponack house, Glimcher shared opinions when asked. Dorn tackled the dining room first, where she

pulled him into her internal debate between minimal and maximal. “Either the dining room could be very simple, or it could go all the way,” says Dorn, who came across an extravagant wallpaper designed by Jennifer Shorto with monkeys leaping through an architectural folly and stylized blue trees.

“The monkeys showed up, and everything just went wild,” Glimcher says. He agreed to let go of his “white cube” gallery aesthetic and got on board. From there, Dorn brought in a long 18th-century Swedish library-type table for dining, 1950s French chiseled dining chairs by Jean Touret, and

“I feel like every Hamptons house should have a **funky room.**”

FAIRFAX DORN



inexpensive basket pendant lights that play off the tropical feeling of the wallpaper. “I feel like every Hamptons house should have a funky room,” Dorn says. “It’s just very cozy.”

It’s the only room in the house that doesn’t have art, as Dorn has yet to find the right piece to work with the wallpaper. Everywhere else, though, art takes pride of place. “I really wanted to showcase artists that Pace and I have a relationship with in a special way,” she says.

In the living room, where she was aiming for an atmosphere that felt “very beachy and open,” David Hockney’s vibrant *Interior with Blue Terrace and Garden* glows

ABOVE LEFT: In the den, a 1940s Frits Schlegel armchair from Ponce Berga and a 2008 chair by Carlos Motta flank a side table by Green River Project. The sofa is by Oliver Gustav, and the cocktail table is a vintage French workbench from Galerie Half. The lamp is by Gino Sarfatti, and the artwork is by Julian Schnabel. **ABOVE:** Sergio Rodrigues barstools from Espasso pull up to a custom island in the kitchen. The pendants are by Heather Levine Ceramics, the wall tile is by Fireclay Tile, and the ceiling is lined in cedar.

over the fireplace. Airy compositions by two other Pace artists—Elizabeth Murray and Lee Ufan—provide counterbalance. The eclectic mix of furnishings, which include a welded-copper side table by Korean designer Kwangho Lee,



A Yoshitomo Nara painting marks the entrance to the guest suite. In the hallway, the early-19th-century bench is African, the shiplap walls are painted in White Dove by Benjamin Moore, and the floors are white oak. **OPPOSITE,** **FROM TOP:** In the master bedroom, the bed linens are by Society Limonta and D. Porthault, the vintage rattan and bamboo stools are from 1stdibs, and the painting is by Sue Williams. A sitting area in the property's guest cottage is furnished with a pair of 1960s Carl Malmsten chairs in a Sandra Jordan alpaca, a Mathieu Matégot cocktail table, and a kilim by Woven; the artwork is by Nathaniel Mary Quinn. For details, see Resources.





are loosely linked by the rhythm of their curves, Dorn says.

A black chandelier by Fred Wilson and three of his paintings set the tone in the home's entry hall, while Julian Schnabel's huge canvas *Rose Painting (Near Van Gogh's Grave)* XXI dominates the den. Indeed, the home is filled with works by Pace artists, including Louise Nevelson, Lynda Benglis, and Yoshitomo Nara. But Dorn also made sure to hang works by artists she has long championed personally, including Nathaniel Mary Quinn, Rita Ackermann, Sue Williams, Loie Hollowell, and William Monk (the latter two are now represented by Pace).

For the couple, who had their first child together in 2018 in the midst of the Sagaponack project, the house is a place for the three of them and Glimcher's four older children from two earlier marriages to gather in the summer and on holidays. "Marc loves it when they're all here," Dorn says. "That was his inspiration for buying the house."

The couple has aimed to make it a retreat—"something that feels comfortable and not so precious," Dorn explains. Sometimes an intervention is exactly what's needed to turn a spec house into a family home. ■



PARADISE FOUND

IN HER MARRAKECH HOME, THE FULL BREADTH OF **MARISA BERENSON**'S CREATIVE TALENTS ARE ON DISPLAY.

BY VANESSA LAWRENCE

PHOTOGRAPHS BY JONATHAN BECKER



آموزشگاه انعکاس منبع جدیدترین اطلاعات ، مقالات و دوره‌های آموزشی دکوراسیون داخلی



Enekas.Academy



Enekas.Academy





Marisa Berenson, wearing an Etro dress from spring 2020, on the patio of her Marrakech riad, which she renovated and designed. The sofa and chairs at left are covered in kilim rugs, and the carved sofa is in a Pierre Frey fabric. The rugs are from Anatolie Kilim, and the fountain is clad in azulejo tiles from Seville, Spain.





THERE IS A COMMON LITANY OF GLAMOROUS TIDBITS THAT TENDS TO accompany any story about Marisa Berenson. Her christening portrait was published in *Vogue*. Elsa Schiaparelli was her maternal grandmother. Gene Kelly taught her to dance. Diana Vreeland jump-started her modeling career. Andy Warhol was a dear friend. Yves Saint Laurent anointed her the “girl of the 70s,” thanks in part to her star-making roles in Luchino Visconti’s 1971 *Death in Venice*, Bob Fosse’s 1972 *Cabaret*, and Stanley Kubrick’s 1975 *Barry Lyndon*. Whether this collection of particulars constitutes anything close to an accurate portrait of Berenson as a model, actress, and general cultural icon is up for debate. But when considering the Marrakech riad that she has called home for the better part of the past few years, it does make you wonder why a woman whose life has been so publicly chronicled over seven decades would open up her personal sanctuary to more of the same.

“This place is my haven. I’m away from the world here, and I do like to keep it that way. So I don’t know why I did these pictures for ELLE DECOR!” Berenson admits with a laugh.

The motivation behind her decision to share her Moroccan home with an audience may be elusive, but we are unquestionably its happy beneficiaries: Berenson designed the house entirely herself, and it is a marvelous example of her multifaceted creative talent. About eight years ago, Berenson started spending more time in Marrakech while she was designing a spa for a Sofitel there and working on an eponymous skin-care line to be used in its treatment rooms. She fell in love with the city’s peaceful lifestyle; after renting a series of houses, she found out about a property for sale through word of mouth.

“It was completely abandoned—like a ghost house,” Berenson recalls. “But there was an energy about it. And I knew it was a place I wanted to transform.”

Berenson studied at London’s Inchbald School of Design when she was 16. “I’ve always decorated my own homes,” she says, adding that she had intended to become an architect before her career as a model took off. As such, she felt confident in reimagining the house into a Venetian-Andalusian amalgam, with help from a local architect who drew up a new set of plans.

The central patio, through which you enter, has a classic fountain covered in blue-and-white azulejos from Seville, Spain. The space is furnished with antique seating reupholstered in textiles by Pierre Frey—most of the home’s fabrics are Pierre Frey—and the tiled floor is strewn with kilim rugs. A fireplace features tiles Berenson salvaged from an old palace in Seville, and the hand-painted mural of angels was inspired by the inside of a church she saw in Spain. She also installed a retractable glass roof, making the patio comfortable even in the winter.

In a living room next to the patio, one finds leopard-print seating and yellow and red Venetian sofas, along with a hand-sculpted plaster fireplace that is as airy as lace. An adjacent dining room, separated by double-sided orange and

gold taffeta curtains, has antique light fixtures Berenson picked up at a Paris flea market and a black-lacquer Chinese panoramic screen that was originally in her New York apartment.

A nearby library is home to a pair of Napoleon III chairs she rescued from the Château de Ferrières, outside Paris. “They were being discarded, and I said, ‘No, no, no, I’m going to keep them!’” says Berenson, who has a knack for reviving abandoned treasures. “They’re all completely in their own juice, getting a bit old. But they have personality.”

The outdoor spaces are equally enchanting, with a wild, lush garden, an expansive terrace, a swimming pool (there is an indoor one, too, for colder days), and an organic vegetable garden and chicken coop. There are two guest-houses, and when you add in the five bedrooms radiating off the main patio and the two upstairs suites, that brings the total bedroom number to nine.

“I wanted this home to be a place where all my loved ones could come to stay for however long,” explains Berenson, who often has people over for festive lunches and cozy dinners. “This house can have intimate corners, or it can have a lot of people if one wants.”

Indeed, Berenson had a housewarming of sorts three years ago when she hosted more than 200 people for a party celebrating the opening of the Yves Saint Laurent Museum. It was an appropriate inauguration considering that Berenson first visited Marrakech as a model in the ’70s, when Saint Laurent held court in the city with Pierre Bergé and Loulou de la Falaise. Berenson’s modeling days are still thriving: She was recently the star of a campaign for the Italian brand Etro, whose cashmere fabrics she used in a beloved Parisian apartment she owned in the ’80s. And Berenson has a slew of film projects, about which she remains coy, on the horizon.

“I never expected any of the things in my life to happen. I dreamt about them. I had a desire for them, but it just came into my life as a sort of miracle,” she says of her long and rich career. “It’s great to be able to still make my dreams come true.” ■

OPPOSITE: A view of the swimming pool and gardens, which Berenson designed.





آموزشگاه انعکاس منبع جدیدترین اطلاعات ، مقالات و دوره‌های آموزشی دکوراسیون داخلی

 Enekas.Academy

 Enekas.Academy





TOP ROW, FROM LEFT: A view of the outdoor pool. Berenson in Etro pants from spring 2020. A hand-painted wall with a butterfly on the patio. The living room. **MIDDLE ROW, FROM LEFT:** Berenson wears an Etro shirt and pants from spring 2020 in her master bedroom, where the bed is covered in a Pierre Frey print and the Syrian nightstands are inlaid with mother-of-pearl. Berenson, wearing an Etro dress and coat from spring 2020, reclines on a sectional covered in a Pierre Frey fabric; the Indian mirror was purchased at an antiques market in Marrakech. **LEFT:** Berenson wears an Etro jacket from spring 2020 on the lawn in front of her house. **OPPOSITE:** Berenson, in an Etro dress and coat from spring 2020, on the patio in front of a set of doors that are hand-carved and covered in gold leaf.



آموزشگاه انعکاس منبع جدیدترین اطلاعات ، مقالات و دوره‌های آموزشی دکوراسیون داخلی

 Enekas.Academy

 Enekas.Academy





CLOCKWISE FROM TOP LEFT:

The dining room as seen from the living room. Berenson in an Etro jacket from spring 2020 with her hens, which lay organic eggs. In the dining room, the fireplace is made with antique azulejos from Seville, and the decor on the table includes mother-of-pearl swans and small silver vases from India, antique crystal candleholders from a flea market in Paris, green vases from Morocco, and colorful ceramic birds, fruits, and vegetables. The outdoor terrace. On the terrace, Berenson wears an Etro kimono from spring 2020 beside an outdoor table, which is set for lunch with vegetables from her organic garden.

OPPOSITE: The indoor swimming pool. For details, see Resources.





THE MANOR BORN

DESIGNER **PHILIP VERGEYLEN** THOUGHT HE'D SEEN IT ALL. THEN CAME THE CALL TO BUILD AND FURNISH A 25,000-SQUARE-FOOT NEW HOME IN THE CENTER OF LONDON.

BY NANCY HASS PRODUCED BY CYNTHIA FRANK PHOTOGRAPHS BY RICARDO LABOUGLE

آموزشگاه انعکاس منبع جدیدترین اطلاعات ، مقالات و دوره‌های آموزشی دکوراسیون داخلی

 Enekas.Academy

 Enekas.Academy





The back facade of a Georgian-style mansion in London, designed by Philip Vergeylen of Paolo Moschino for Nicholas Haslam, overlooks an expansive lawn framed by clipped taxus hedges and European beech trees.

آموزشگاه انعکاس منبع جدیدترین اطلاعات ، مقالات و دوره‌های آموزشی دکوراسیون داخلی

 Enekas.Academy

 Enekas.Academy





آموزشگاه انعکاس منبع جدیدترین اطلاعات، مقالات و دوره‌های آموزشی دکوراسیون داخلی

 Enekas.Academy

 Enekas.Academy



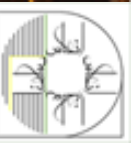


In the library, the sofa and armchairs, in fabrics by Lelièvre and Zoffany, are all custom, the cocktail table is by Bernhard Rohne, and the bronze console is from the 1970s. The table lamps are by Paolo Moschino for Nicholas Haslam, the chandelier is Charles X, and the marble-and-bronze mantel features a pair of bronze satyrs. The lacquered walls are inset with custom boiserie by Féau & Cie.

آموزشگاه انعکاس منبع جدیدترین اطلاعات، مقالات و دوره‌های آموزشی دکوراسیون داخلی

 Eneka.Academy

 Eneka.Academy



F

FIVE YEARS AGO, WHEN THE BELGIUM-BORN, London-based designer Philip Vergeylen met briefly with a prospective client to discuss a commission—a vast classical estate planned for smack in the middle of the tony London enclave of St. John’s Wood—he thought to himself, There’s no way a house of this size and ambition will ever be built here.

But soon after, the client suggested a follow-up meeting on-site. He wanted to show Vergeylen the extraordinary edifice that had, indeed, already been constructed—at least the bare bones of it. The 25,000-square-foot Georgian-style mansion was spread over three floors, set on tranquil rolling lawns hidden from public view. “My mouth was just wide open when I saw it,” Vergeylen says. “It was complicated and enormous.” That it was also basically a shell thrilled the designer; he was accustomed to mammoth feats. A former marketing executive who changed careers a decade ago, he has developed a thriving interiors business to complement Paolo Moschino for Nicholas Haslam Ltd, the furnishings company purchased in 1995 by his romantic and business partner, the Italian-born Moschino, from the legendary decorator. (Haslam himself, now 80, still decorates for private clients under his own name.) The much-photographed late-19th-century house that Vergeylen and Moschino fashioned for themselves in the once-dicey London neighborhood of Victoria is widely considered a tour de force of floor-plan reinvention, and their weekend house in West Sussex, in southeast England, is a celebration of British country vernacular, honed with a fresh edge.

RIGHT: Designer Philip Vergeylen in the dining room.
OPPOSITE: The orangery’s custom dining table, inspired by midcentury French designer Serge Roche, is surrounded by Louis XVI–style chairs from a Paris flea market. A crystal-and-amethyst chandelier hangs below a skylight framed by a mirrored trellis. The mirror is Venetian, the candle stands are by Paolo Moschino for Nicholas Haslam, and the Roman shades are of a Sahco silk.

Such a mélange is Vergeylen’s forte. Whether designing for himself or for clients, he brings a contemporary twist to traditional environments. With his encyclopedic knowledge of history’s iconic rooms and a puckish sense of humor, he loves nothing more than parsing a grand residence into a series of interlocking, ever-evolving narratives that careen through centuries and cultures.

Because Paolo Moschino for Nicholas Haslam has a deep expertise in custom work as well as its own sumptuous line of furniture and objects, Vergeylen is able to freely mix antiques with modernist—even Brutalist—pieces to create a layered tapestry. “Who doesn’t love a deep story?” he says.

In the St. John’s Wood house, there certainly was a broad canvas to work with. The couple, who have four children, wanted a profound sense of opulence throughout the estate and allowed Vergeylen to lavish every surface with the finest European techniques, even if it meant bringing in craftsmen from other countries. He was able to adorn the walls with boiserie from Féau & Cie, the Paris-based firm that has, over the years, acquired wall panels from historic 17th- and 18th-century buildings as well as those by Art Deco masters Eugène Printz and Émile-Jacques Ruhlmann. Féau’s artisans set up shop in the house for weeks, fitting, painting, and finishing every inch. Much of the lighting is provided by crystal chandeliers, both antique and custom, made in Greece to Vergeylen’s specifications. There are also a multitude of marbles throughout—from Nero Marquina to Saint Anne—in floor patterns, tabletops, and carved hearths that subtly enrich the atmosphere. ▶





آموزشگاه انعکاس منبع جدیدترین اطلاعات، مقالات و دوره‌های آموزشی دکوراسیون داخلی





A 19th-century English flamed-mahogany table stands in the entry hall. The Paolo Moschino for Nicholas Haslam bench is in a Turnell & Gigon velvet, the custom doors have Beardmore hardware, and the flooring combines Carrara and Nero Marquina marbles. **OPPOSITE:** The dining room's table, hand-carved gilded chairs, crystal-and-bronze chandeliers, and silk rug with dragon motif are all custom. The mercury mirror is integrated into wood paneling from Féau &





آموزشگاه انعکاس منبع جدیدترین اطلاعات ، مقالات و دوره‌های آموزشی دکوراسیون داخلی





In a house so large, Vergeylen says, each room ought to spring from a profound inspiration, maintaining its own inner life. While such chambers must feel part of the whole, they must also each tell a discrete tale. Otherwise, he feels that such a house runs the risk of seeming unpunctuated and becomes just an agglomeration of beautiful things.

For example, in creating the highly ornamented dining room, Vergeylen used a palette informed by the gold and deep green Paris salon that Hubert de Givenchy fashioned at his 1731 hôtel particulier in the 7th arrondissement. Because the room is in its own wing, Vergeylen was able to commission a huge gilded-bronze cupola to let in more light—or, in the evening, a view of the night sky. The silk rug, of his design, bears a border with dragons—an homage to the wife’s childhood years spent in Asia.

Vergeylen used another iconic Parisian room as fodder for the orangery, where the family often eats breakfast: Ladurée, the pale-green patisserie. The hue is as redolent as one of Proust’s madeleines, and there are mercury-mirrored doors in the space as well as a Serge Roche-inspired table.

The library, cozy yet vibrant, references the famed rue Cambon jewel-box apartment of Coco Chanel, kept intact all these years and arrayed with her bold brass objets and some of the Coromandel screens she collected. But Vergeylen says his interpretation is “done in a bolder manner”: Walls are lacquered in aubergine, and Coromandel and gilt details flank a marble-and-bronze mantel. There is also a Charles X chandelier and an etched fire-oxidized-copper cocktail table by 1970s master Bernhard Rohne.

But as always, Vergeylen’s allusions span the globe. The DNA of the games room, for example, originated in an idealized locale thousands of miles east of this fashionable slice of London. It resembles a

ABOVE: In the pool area, the rattan furniture is by Bielecky Brothers, and the pendants are by Charles Edwards. **RIGHT:**

In the drawing room, the sofas, in a Claremont silk velvet, slipper chairs, in a Le Manach tiger velvet, and cocktail table of reclaimed Brèche Violette marble with bronze claws are all custom. The 18th-century Coromandel screen is Chinese, and a pair of Louis XVI–style mirrors hang above antique demi-lune tables. The curtains are of a Claremont taffeta, the silk rug is hand-knotted, and the painting is by Vergeylen.







ABOVE: The master bed has a custom canopy of Turnell & Gigon fabrics and D. Porthault bedding. The custom sofa is in a Pierre Frey print, the chairs are by Paolo Moschino for Nicholas Haslam, and the 1970s cocktail table is Italian. The chandelier is by Fiona McDonald, and the walls are in Pure Grey 5 by Papers and Paints.

OPPOSITE, FROM TOP: The powder room's custom black-lacquer paneling is inset with Gracie wallpaper. The conservatory's sofa is by Massant, and the 19th-century chairs are in a Paolo Moschino for Nicholas Haslam linen; the 1960s cocktail table is French, and the pendant is by Charles Edwards. For details, see Resources.

Chinese Art Deco hideaway with a billiard table and a forest-green chesterfield sofa, and the seed of its inspiration was a visit to the chic Hong Kong restaurant of the late Sir David Tang. Vergeylen amplified that mood with a boldly geometric carpet evoking those favored by the debonair decorator David Hicks, who in the 1960s redefined urbane English style.

The house was finished a year ago; before then, among the first rooms completed was the husband's study, based on a blue Paris dining room created by



Stéphane Boudin, the Maison Jansen designer who in the 1960s helped Jacqueline Kennedy redo the White House. Paneled in mahogany, with black-lacquered pilasters flanking the mantel, it was so inviting—simultaneously masculine, elegant, and homey—that one night, long before the rest of the house was entirely habitable, the husband sent Vergeylen a picture, taken in the study, of a bottle of Château Pétrus beside a full glass and a roaring fire. The caption? “I’m in heaven.” ■



RESOURCES

Items pictured but not listed are from private collections.

EDITOR'S LETTER

PAGE 26: Custom closet: The Container Store, containerstore.com. **Master bath countertop:** Caesarstone, caesarstoneus.com. **Fittings:** Brizo, brizo.com. **Wall tiles:** The Tile Shop, tilshop.com. **Doors:** LaCantina Doors, lacantinadoors.com. **Range:** Dacor, dacor.com. **Island countertop:** Caesarstone.

POV

PAGES 31–32: *Sasha Bikoff, sashabikoff.com.* **Swivel chairs and bar stools:** Elle Decor Collection, elleboutique.com. **Sofa:** Universal Furniture, universalfurniture.com. **Rug:** The Rug Company, therugcompany.com. **Side table and chairs:** Calligaris, calligaris.com. **Curtains fabric:** Vervain, vervain.com. **Curtain installation:** The Shade Store, theshade.com.

TALENT

PAGE 42: *Duro Olowu, duroolowu.com. Lulu Lytle, Soane Britain, soane.co.uk.*

SHOP TALK

PAGE 44: *Yuttana Abkornburee, Thomas Goode & Co., thomasgoode.com.*

TRUTH IN DECORATING

PAGES 46–48: *Suzanne Tucker, Suzanne Tucker Home, suzannetuckerhome.com; Ellie Cullman, Cullman & Kravis, cullmankravis.com; Martyn Lawrence Bullard, Martyn Lawrence Bullard Design, martynlawrencebullard.com; Daniel Martin, thewallgroup.com.*



TOOLBOX

PAGE 61: Tiles: 1. Diamond Chevron Lawn, Milk, and Kohl cement tile, from \$25 per sq. ft., pophamdesign.com. 2. Sister Parish Design Serendipity Blue glazed ceramic tile, \$40 per sq. ft., countryfloors.com. 3. Ink Azulejo Artístico glazed ceramic tile, \$50 per sq. ft., tilshop.com. 4. Terrazzo Il Breggia composite tile, from \$7 each, balineum.co.uk. 5. Sister Parish Design Serendipity Red glazed ceramic tile, \$40 per sq. ft., countryfloors.com. 6. Kohler WasteLAB Crackle Field Amber glazed ceramic tile, from \$40 per sq. ft., annsacks.com. 7. Kohler WasteLAB Crackle Field Emerald glazed ceramic tile, from \$40 per sq. ft., annsacks.com. 8. Rush River Stone Hampton

Carrara Polished marble tile, \$25 per sq. ft., tilshop.com. 9. Hanley Tube Line Scallop Ocean and Cornflower glazed ceramic tile, \$13 each, balineum.co.uk. 10. Sister Parish Design Albert Green glazed ceramic tile, \$40 per sq. ft., countryfloors.com. 11. Kohler WasteLAB Crackle Field Turquoise glazed ceramic tile, from \$40 per sq. ft., annsacks.com. 12. Hanley Tube Line Scallop Fern and Cherry glazed ceramic tile, \$13 each, balineum.co.uk. 13. Cristina Celestino for Fornace Brioni Acanti Rosato terra-cotta tile, \$35 per sq. ft., cletile.com.

DANIEL'S KITCHENS

PAGES 67–68: *Daniel Boulud of Restaurant Daniel, danielnyc.com.* **Carabineros shrimp:** Browne Trading Company, brownetrading.com. **Pan:** Staub, staub-online.com. **Tea towel:** Heather Taylor Home, heather taylorhome.com. **Cutting board:** Black Creek Mercantile & Trading Co., marchsf.com.

ZODIAC TABLESCAPE

PAGES 70–71: **Platter, plates, cup and saucer, teapot, flatware, napkin fabric, and table:** Hermès, hermes.com. **Champagne flute, tumbler, and candlestick:** Saint-Louis, saint-louis.com. **Floral centerpiece:** East Olivia, eastolivia.com.

ONE TREE HILLS

Interior design: Sophia Bush and Jake Alexander Arnold, jakeaarnold@gmail.com. Contractor: Orié Prince, orieprince.com. Landscape design: John Alden Sharp, johnaldensharp.com. **PAGES 72–73:** **Table:** Knoll, knoll.com. **Chair cushions fabric:** Zak+Fox, zakandfox.com. **Rug:** Doris Leslie Blau, dorisleslieblau.com. **PAGES 74–75:** **Sectional:** B&B Italia, bebitalia.com. **Side table:** Eileen Gray, eileengray.co.uk. **Range:** Dacor, dacor.com. **Cabinet hardware:** Rocky Mountain Hardware, rockymountainhardware.com. **Island countertop:** Caesarstone, caesarstoneus.com. **Faucet:** Brizo, brizo.com. **Bar stools:** Hay, us.hay.com. **PAGES 76–77:** **Bathtub fittings:** Brizo. **Towels:** Scandia Home, scandiahome.com. **Wall tile:** The Tile Shop, tilshop.com. **Wall and ceiling paint:** Portola Paints & Glazes, portolapaints.com. **Bedding:** Scandia Home. **Decorative pillows:** Pat McGann, patmcganngallery.com. **Pendant:** Gubi, gubi.com. **Sconces:** Circa Lighting, circalighting.com. **Doors:** LaCantina Doors, lacantinadoors.com. **Desk:** Knoll. **Terrazzo tile:** Nurazzo, nurazzo.com.

UPTOWN SPUNK

Interior design: David Netto, davidnettodesign.com. Architecture: Gil P. Schafer, G.P. Schafer Architect, gpschafer.com. **PAGES 80–81:** **Console:** Christopher Hodson, hodson.com. **Lamps:** Blackman Cruz, blackmancruz.com. **Mirror:** RH Modern, rhmodern.com. **Light fixture:** The Urban Electric Co., urbanelectric.com. **Sconce:** Liaigre, liaigre.com. **Wallpaper:** Pierre Frey, pierrefrey.com. **Runner:** Holland & Sherry, hollandandsherry.com. **Artworks:** Dewey Nicks, deweynicks.com; Ralph Gibson, ralphgibson.com. **PAGES 82–83:** **Sofa and cocktail table:** Liz O'Brien Editions, lizobrien.com. **Sofa fabric:** Holland & Sherry.

Louis XV chair: Gerald Bland, gerald blandinc.com. **Louis XV chair fabric:** Jasper, michaelsmithinc.com. **Cane chair:** Bauhaus 2 Your House, bauhaus2yourhouse.com. **Dining table:** Rove Concepts, roveconcepts.com. **Table lamp:** Gregorius Pineo, gregoriuspineo.com. **Artwork:** Richard Serra, gagosian.com. **Wallpaper:** Studio Printworks, studioprintworks.com. **Carpet:** Beauvais Carpets, beauvaiscarpets.com. **Painting:** Kurt Pio, kurtpio.co.za. **PAGES 84–85:** **Chair:** Ecart International, ecart.paris. **Wall-covering:** Nobilis, nobilis.fr. **Artwork:** Hugo Guinness, hugoguinness.com. **Table lamp:** Gregorius Pineo. **Floor lamp:** Cedric Hartman, cedrichartman.com. **Oven and hood:** Wolf, subzero-wolf.com. **Cabinet hardware:** E.R. Butler & Co., erbutler.com. **Clock:** MoMA Design Store, store.moma.org. **Vanity:** Urban Archaeology, urbanarchaeology.com. **Fittings:** Lefroy Brooks, lefroy brooks.com. **Wall paint:** Benjamin Moore, benjaminmoore.com. **PAGES 86–87:** **Headboard fabric:** Sahco, sahco.com. **Linens:** Schweitzer Linen, schweitzerlinen.com. **Night-stands:** Mecox, mecox.com. **Lamps:** Collier Webb, collierwebb.com. **Stools:** Design Within Reach, dwr.com. **Side table:** Lawson-Fenning, lawsonfenning.com. **Curtain, wallcovering, and screen fabrics:** Sahco. **Sink:** St. Thomas Creations, stcbath.com. **Sink and shower fittings:** Newport Brass, newportbrass.com. **Medicine cabinet:** RH, Restoration Hardware, rh.com. **Shower tile:** Daltile, daltile.com. **Wall paint:** Benjamin Moore.

PLAYING HOCKNEY

Interior design: Fairfax Dorn, Fairfax Dorn Projects, fairfaxdornprojects.com. **PAGES 88–89:** **Console:** Lief, liefalmont.com. **Side table:** Salon 94 Design, salon94design.com. **Blouse:** Celine, celine.com. **Pants:** Gucci, gucci.com. **Boots:** Hermès, hermes.com. **Artworks:** Pace Gallery, pacegallery.com. **Chair fabric:** Sandra Jordan, sandrajordan.com. **Stool:** Galerie Half, galeriehalf.com. **Chandelier:** Nilufar, nilufar.com. **PAGES 90–91:** **Wallcovering:** Jennifer Shorto, jennifershorto.com. **Dining table:** Galerie Half. **Dining chairs:** Almond & Co., almondandcompanysf.com. **Sideboard:** Alt for Living, altforliving.com. **Table lamps:** Wyeth, wyeth.nyc. **Pendants:** CB2, cb2.com. **Bookcase paint:** Farrow & Ball, farrow-ball.com. **PAGES 92–93:** **Armchair:** Ponce Berga, ponceberga.com. **Chair:** Carlos Motta, carlosmotta.com. **Side table:** Green River Proj-

ect, greenriverprojectllc.com. **Sofa:** Oliver Gustav, studio.olivergustav.com. **Cocktail table:** Galerie Half. **Lamp:** Gino Sarfatti, flos.com. **Artwork:** Julian Schnabel, julianschnabel.com. **Bar stools:** Espasso, espasso.com. **Pendants:** Heather Levine Ceramics, heatherlevine.com. **Wall tile:** Fireclay Tile, fireclaytile.com. **PAGES 94–95:** **Wall paint:** Benjamin Moore, benjaminmoore.com. **Artwork:** Pace Gallery, pacegallery.com. **Bed linens:** Society Limonta, societylimonta.com; D. Porthault, dporthaultparis.com. **Stools:** 1stdibs, 1stdibs.com. **Chairs fabric:** Sandra Jordan. **Rug:** Woven, woven.is.

PARADISE FOUND

Interior design: Marisa Berenson. **PAGES 96–97:** **Dress:** Etro, etro.com. **Sofa fabric:** Pierre Frey, pierrefrey.com. **Rugs:** Anatolie Kilim, anatolie kilim.fr. **PAGES 100–101:** **Shirt, pants, dress, and coat:** Etro. **Bedding and sectional fabric:** Pierre Frey. **PAGES 102–103:** **Jacket and kimono:** Etro.

THE MANOR BORN

Interior design: Philip Vergeylen, Nicholas Haslam Ltd, nicholashaslam.com. **PAGES 106–107:** **Sofa and armchair fabrics:** Lelièvre, lelievreparis.com; Zoffany, stylelibrary.com. **Cocktail table:** Bernhard Rohne, bernhardrohne.com. **Table lamps:** Nicholas Haslam, nicholashaslam.com. **Boiserie:** Féau & Cie, feauboiserie.fr. **PAGES 108–109:** **Candle stands:** Nicholas Haslam. **Shade fabric:** Sahco, sahco.com. **PAGES 110–111:** **Bench:** Nicholas Haslam. **Bench fabric:** Turnell & Gigon, turnellandgigon.com. **Door hardware:** The Beardmore Collection, beardmore.co.uk. **Paneling:** Féau & Cie. **Sconces:** Bronzes de France, bdf-usa.com. **PAGES 112–113:** **Rattan furniture:** Bielecky Brothers, bieleckybrothers.com. **Pendants:** Charles Edwards, charlesedwards.com. **Sofa fabric:** Claremont, claremontfurnishing.com. **Slipper chair fabric:** Le Manach, pierrefrey.com. **Curtains fabric:** Claremont. **PAGES 114–115:** **Canopy fabric:** Turnell & Gigon. **Bedding:** D. Porthault, dporthaultparis.com. **Sofa fabric:** Pierre Frey, pierrefrey.com. **Chairs:** Nicholas Haslam. **Chandelier:** Fiona McDonald, fionamcdonald.com. **Wall paint:** Papers and Paints, papersandpaints.co.uk. **Wallpaper:** Gracie, graciestudio.com. **Sofa:** Massant, massant.com. **Chair fabric:** Nicholas Haslam. **Pendant:** Charles Edwards.

ELLE DECOR (ISSN 1046-1957) Volume 31, Number 2, March 2020, is published monthly except bimonthly in January/February and July/August, 10 times a year, by Hearst, 300 West 57th Street, New York, NY 10019 U.S.A. Steven R. Swartz, President & Chief Executive Officer; William R. Hearst III, Chairman; Frank A. Benack, Jr., Executive Vice Chairman. Hearst Magazine Media, Inc.: Troy Young, President; Debi Chirichella, Executive Vice President, Chief Financial Officer and Treasurer; John A. Rohan, Jr., Senior Vice President, Finance; Catherine A. Bostron, Secretary. © 2020 by Hearst Magazine Media, Inc. All rights reserved. ELLE and ELLE DECOR are used under license from the trademark owner, Hachette Filipacchi Presse. Periodicals postage paid at N.Y., N.Y., and additional mailing offices. Canada Post International Publications mail product (Canadian distribution) sales agreement No. 40012499. Editorial and Advertising Offices: 300 West 57th Street, New York, NY 10019. Subscription prices: United States and possessions: \$15 for one year. Canada: \$41 for one year. All other countries: \$60 for one year. Subscription Services: ELLE DECOR will, upon receipt of a complete subscription order, undertake fulfillment of that order so as to provide the first copy for delivery by the Postal Service or alternate carrier within 4–6 weeks. For customer service, changes of address, and subscription orders, log on to service.elledecor.com or write to Customer Service Department, ELLE DECOR, P.O. Box 37870, Boone, IA 50037. From time to time, we make our subscriber list available to companies who sell goods and services by mail that we believe would interest our readers. If you would rather not receive such offers via postal mail, please send your current mailing label or exact copy to Mail Preference Service, P.O. Box 37870, Boone, IA 50037. You can also visit preferences.hearstmags.com to manage your preferences and opt out of receiving marketing offers by e-mail. ELLE DECOR is not responsible for unsolicited manuscripts or art. None will be returned unless accompanied by a self-addressed stamped envelope. Canadian registration number 126018209RT0001. POSTMASTER: Please send address changes to ELLE DECOR, P.O. Box 37870, Boone, IA 50037. Printed in the U.S.A.

PROMOTION

CRAFTING LUXURY



Photography: Peter Clarke



MIRIAM FANNING

Mim Design
mimdesign.com.au

NNH RESIDENCE: MIRIAM FANNING

Designer Miriam Fanning received the 1st Place Contemporary Award in the 2017-2018 Sub-Zero, Wolf, and Cove Kitchen Design Contest. Adeptly understanding the desires of her clients, Fanning created a space that exudes luxury yet maintains familial warmth. Featured in this kitchen are a Sub-Zero 30" Designer Series column refrigerator, 30" Designer Series column freezer, 30" Designer Series wine storage unit, Wolf 36" induction cooktop, 30" M Series convection oven, 30" M Series convection steam oven, and a 30" warming drawer. To learn more about this award-winning kitchen, visit subzero-wolf.com/kitchens.

THE KITCHEN DESIGN CONTEST sponsored by



آموزشگاه انعکاس منبع جدیدترین اطلاعات، مقالات و دوره‌های آموزشی دکوراسیون داخلی

 Enekas.Academy

 Enekas.Academy





ELLE DECOR is a trademark owned by HACHETTE ELI PACCHETTI PRESSÉ, France.

the Parisians' lifestyle

ELLE DECOR COLLECTION

elleboutique.com/elledecor/ #parisiananywhere

آموزشگاه انعکاس منبع جدیدترین اطلاعات، مقالات و دوره‌های آموزشی دکوراسیون داخلی

 Enekas.Academy

 Enekas.Academy





ELLE
DECOR

آموزشگاه انعکاس منبع جدیدترین اطلاعات ، مقالات و دوره‌های آموزشی دکوراسیون داخلی

 Enekas.Academy

 Enekas.Academy



NOT FOR SALE

Fable to Table

ATHENS-BORN ARTIST **KONSTANTIN KAKANIAS**
PUTS A WHIMSICAL SPIN ON DINNERWARE.

PRODUCED BY PARKER BOWIE LARSON

PHOTOGRAPH BY ALLIE HOLLOWAY

Each month,
ELLE DECOR asks
an artisan to create
a unique item for us.
At the end of the
year, these pieces
will be auctioned off
to benefit the charity
of ED's choice.

A hand-painted plate by
Konstantin Kakanias depicts
his fictional character
Mrs. Tependris.



Contemporary Greek painter Konstantin Kakanias works in an idiosyncratic style, infusing his illustrations with both a sense of charm and accessibility. Mrs. Tependris, a tongue-in-cheek character he invented in the 1990s, makes frequent appearances in his work. A composite of sorts, this heroine is inspired by a myriad of real-life people he has known. "She is a caricature with a history," the artist explains. This hand-painted ceramic plate pays playful homage to the famous Horst P. Horst image of Baroness Pauline de Rothschild—the American-born writer, fashion designer, and wife of Baron Philippe de Rothschild—in one of the bedrooms of her French wine estate, Château Mouton. The best part: Although it's painted by hand, the dish need not be hand-washed. So go ahead, give Mrs. Tependris a run through the dishwasher. —Samantha Swenson gavlakgallery.com

Background: Brighton Pavilion wallpaper in Peacock by Miles Redd for Schumacher; mahoneswallpapershop.com.

LETTERING: KONSTANTIN KAKANIAS

آموزشگاه انعکاس منبع جدیدترین اطلاعات، مقالات و دوره‌های آموزشی دکوراسیون داخلی

Enekas.Academy

Enekas.Academy



Live deliciously.

From the first toast to the final bite, relish every moment and meal.

WOLF **SUBZERO** **COVE**

Cooking. Refrigeration. Dishwashing.

آموزشگاه انعکاس منبع جدیدترین اطلاعات، مقالات و دوره‌های آموزشی دکوراسیون داخلی

 Enekas.Academy

 Enekas.Academy





866-VUITTON louisvuitton.com

LOUIS VUITTON

آموزشگاه انعکاس منبع جدیدترین اطلاعات ، مقالات و دوره‌های آموزشی دکوراسیون داخلی

 Enekas.Academy

 Enekas.Academy

