

Seasonal Ideas ❄ Seasonal Buys ❄ Seasonal Homes

STILL ONLY
£3.65

January 2017 ❄ £3.65

Good Homes

Britain's fastest-growing homes magazine

Look inside...
978 stylish ideas
to celebrate
the new year

150+ GREAT BUYS

BAUBLES & WREATHS

LAST-MINUTE GIFTS

EASY ENTERTAINING

WIN*

£5,000

AT DUNELM

£6,000

LEISURE RANGE
COOKERS

£2,000

CONTURA
WOOD BURNER

10 MAGICAL
HOMES
& real makeovers

20 pages of

Festive decorating

- ❄ Instant room updates
- ❄ Easy Christmas makes
- ❄ Warm, sparkly schemes

آموزشگاه انعکاس منبع جدیدترین اطلاعات، مقالات و دوره‌های آموزشی دکوراسیون داخلی

Enekas.Academy

Enekas.Academy

GoodHomes

Goodhomesmagazine.com

Editor Karen Walker
Deputy editor Natalie Osborn
Acting art editor Lisa McSorley
Senior designer Jenna Plumb
Style editor Ali Lovett
Style assistant Jessica Taverner
Chief sub/Production editor Gemma Rollason
Sub editor Simon Berkovitch

SALES & PROMOTIONS
Publishing director Justin Levett
Editor-in-chief Lisa Allen
Commercial manager Tim Price
Advertising manager Shelby Foord
Publishing assistant Jennifer Trigg
Production director Tim Garwood
Studio director Lee Moore
Studio manager Elliott Prentice
Graphic design Justin Clarke,
 Christopher Jennings, Jess Jilka,
 Charlotte Monnoyer, Christian Muhika
Production manager Nicola Merry
Production assistant Laura Cope

PR & MARKETING
Senior marketing manager Sarah Potter
Circulation & marketing manager Mark Kenton
Marketing executive Rebecca Roe
Website editor Charlotte Byrne
Image researcher Kerry Garwood
HR director Jane Musgrove

Chief executive officer Lee Newton

SUBSCRIPTIONS

Good Homes magazine is published 12 times per annum and will be delivered to your door. Phone 01293 312153 to place your credit-card order, or email customerservice@goodhomessubscriptions.com. Annual subscription rate: UK £43.80. Europe £65. Rest of world £95. Printed by William Gibbons & Sons (williamgibbons.co.uk). All rights reserved. Reproduction in whole or in part without written permission is strictly prohibited. Text and picture material is sent at the owner's risk. All prices and information correct at time of going to press. Good Homes magazine is published by Media 10. Good Homes is a registered trademark. ISSN 1461-5231

BACK ISSUES 01293 312153

CONTACT US

Media 10, Crown House, 151 High Rd, Loughton IG10 4LF
 T 020 3225 5200
 W goodhomesmagazine.com
 E info@goodhomesmagazine.com
 E sales@goodhomesmagazine.com



Can't find Good Homes in the shops?
 Ask your newsagent to reserve each
 issue for you. Some newsagents may
 be able to arrange home delivery.



Just add magic

With the Christmas holidays nearly upon us, now's the perfect time to fill your home with all the things you love – family and friends, festive food and stylish decorating ideas. This issue is packed with gorgeous seasonal looks for that extra touch of sparkle – from glamorous schemes mixed with vintage-inspired accessories, to handmade crafts for stylish dining and smart solutions to make your home welcoming for guests. There's also last-minute gifts for under £5, a fuss-free celebration menu and clever tips to help ensure you have the merriest time. Happy New Year!

Karen

EDITOR
 KAREN WALKER

DOWNLOAD THE FREE GOOD HOMES APP

Your favourite magazine in digital format

- * Easy swipe and navigation tools
- * Zoom in for a closer look
- * Free for print magazine subscribers

Search Good Homes magazine



Google play



Available on the App Store

amazon kindle



JOIN US ON... Facebook facebook.com/GoodHomes

Twitter @GoodHomesMag Instagram @goodhomesmag

This month January



108

**SUBSCRIBE
& SAVE**

Receive 12 issues
of Good Homes
for just £21.99

42

Seasonal ideas

- 17** Have your best-ever New Year

Shopping

- 28** January on the internet
30 Colour of the month: Winter rose
33 Style spotlight: Stars
34 Live the trend: Cosy cabin
36 Smart solutions: Guest bedroom
39 10 under £5

Winter homes

- 76** 'Our Christmas is full of laughter'

- 86** 'Everyone joins us to celebrate'
98 'I vary our festive colours every year'
108 'This house is so cosy in winter'

Kitchens & bathrooms

- 122** 'I knew this was the right design'
128 'We love to entertain'
142 'The blue tub is a fun twist'
146 'Our en suite is hi-tech'



COVER PHOTOGRAPH MARK SCOTT

On the cover

- 17-41** 150+ great buys
19 Baubles & wreaths
39 Last-minute gifts
45 Win £5,000 at Dunelm
47-70 20 pages of festive decorating
48 Warm, sparkly schemes
57 Instant room updates
65 Easy Christmas makes
73 Win £6,000 Leisure range cookers
76-160 10 magical homes & real makeovers
133 Win £2,000 Contura wood burner
166 Easy entertaining

51



96



30



58



68



Competitions

- 45** Win a shopping spree at Dunelm
- 73** Four Leisure range cookers up for grabs
- 97** A chance to upgrade to a luxury double bed
- 133** Cosy-up with a Contura stove, worth more than £2,000

Extension projects

- 154** 'Good advice was key'
- 158** 'We now have the space we need'

Buyer's guides

- 136** Pick the best tumble dryer
- 150** Add style with wall tiles
- 162** Choose your ideal sofa

Seasonal recipes

- 166** Plan the perfect New Year celebration

Regulars

- 11** From the editor
- 40** Shopping made easy
- 178** Finishing touches

Decorating

- 48** Romantic chic
- 57** Interior design course: Instant updates to impress guests
- 65** Make it special: Modern metallics



97



67



29



33





Have your best-ever NEW YEAR



Our round-up of the latest buys, clever ideas and special finishing touches

Winter comforts

This month, appreciate the simple pleasures in life and play outdoor games or go sledging with your family, surround yourself with scented candles, curl up with a snuggly throw, or invite friends round for delicious fireside treats. With the cold nights drawing in and the festivities calming down, there's never been a better time to retreat to the comfort of your own home.

SNOWY SCENE

Fjord green duvet cover set, from £15; white wooden lanterns, £17.99 each; frosted pines wrapping paper, £2 per 5m roll; sheepskin fur rug, £34.99; luxury mistletoe wreath, £15; wooden star decoration, £5, all Dunelm

THIS MONTH

WE'RE LOVING



↑ PARTY DRINKS

Punch bowl and glasses set, £30, Next Home

WE'RE PLAYING



↑ FAMILY GAMES

Ridley's The Name Game quiz, £7.95, Wild & Wolf

WE'RE BUYING



↑ DAINTY DECORATIONS

Baubles in pink or white, £3.49 each, Wyevale

Enjoy a great New Year's Eve



JUST THE TWO OF YOU

There's no better New Year ritual than Hogmanay, so head to Kinloch Lodge on the Isle of Skye for a three-night break (from £600pp) that includes a seven-course menu, cocktails, fireworks and a piper at midnight. kinloch-lodge.co.uk



FOR YOU & YOUR FRIENDS

Wrap up warm and gather outside the illuminated York Minster to hear the bells chime midnight for a traditional start to 2017. It's free, but arrive early to nab a good spot and revel in the atmosphere. See yorkminster.org for details.



FOR ALL THE FAMILY

Set against London's iconic skyline, the capital's world-famous firework display is set to wow again this year. There are five viewing areas along the River Thames and the fun begins at 7.30pm. Tickets, £10 per person, seetickets.com



STYLING TIP

Ramp up the glamour by installing a wall of fairy lights and hanging an illuminated wreath above the table from a ceiling hook

DECADENT DINING

Fairy lights, £60; wreath, £100; table runner, £20; napkin rings, £20 for four; placemats, £30 for two; wine glasses, £25 for four; table scatters, £15; tealight holders, £10 each; candle holders, £25 each; pre-lit sparkle garland, £60; luxury crackers, £35 for six, all The White Company

MAKE IT SPECIAL

Set the scene for a celebration

Make this New Year's Eve one to remember by throwing a glittering dinner party for family and friends. Opt for a sophisticated palette of silver and on-trend grey. Add atmosphere with candlelight and texture with faux foliage.

▸ SUBTLE GLOW

Frosted eucalyptus wreath, £45, The Contemporary Home



↑ STELLAR APPEAL

Pack of six assorted moon and star balloons, £13.75, Berry Red

SHOP THE LOOK

SILVERY TOUCH

Pair of beaded placemats, £20, Creative Tops

↑ SPARKLING TRIO

Set of three mercury glass tealight holders, £25, Pia



HOW TO

DECORATE ON A BUDGET

- If you're hosting over the festive season, you don't need to spend a fortune to create an event with wow factor. For larger gatherings, join tables together and cover with elegant, inexpensive fabric (try Ikea, from £1 per m) and wooden stools or benches (try Sainsbury's Home).
- Double up conical party hats for use as place setting decorations.
- Oversized helium balloons spelling out the year will make a stunning centrepiece without taking up any much-needed space on the table.



£299

← GOOD CHOICE
Duke cocktail chair,
Swoon Editions

Price patrol COCKTAIL CHAIRS

Add vintage glamour to your scheme with dusky velvet

DESIGNS YOU'LL Love



£425

→ LUXURY TOUCH
Le Cocktail velvet
chair, Oliver Bonas

January sales

ONES TO WATCH

❄️ **Dunelm** 25 December (online);
26 December-22 January (in store)

❄️ **House of Fraser**
24 December-22 January

❄️ **Heal's** 24 December-30 January

❄️ **Ikea** 22 December-8 January

❄️ **John Lewis** 24 December
(online); 27 December (in store)

STYLING TIP

Arrange different heights of cut logs vertically in groups to create a stylish platform to showcase your favourite candles for extra glow

NORDIC INSPIRED

Sheepskin rug (on sofa), £137.50; sheepskin cushions, from £100 each; Argentinian cowhide, £645, all Amara. Throw, £138, Bronte by Moon. Big knit cushion in putty, £95, Gant. Nomad tray in oak, £59, Skagerak. Enamel stove kettle, £30, Garden Trading

GET COSY

Chill-out zone

Once the Christmas rush is over, take time out over the holiday period and enjoy family life by creating a homely space in which to unwind. Finish off a restful scheme by playing with different ways of adding light – log burners are ideal for filling a snug, Scandi-style room with a flickering glow, for example.



↑ WINTER WARMER

Carron stove in pebble, from £525, Ludlow Stoves



← **BACK TO NATURE**
Wood and wingnut desk lamp, £180, Furnish.co.uk

SOFT & SUMPTUOUS

Tibetan sheepskin rug in grey, £120, Bell & Blue

SHOP THE LOOK



SIMPLE COCKTAIL FESTIVE FIZZ

Greet guests with a classic tipple

- 1 For each drink, place sugar cube in the bottom of a champagne flute. Add 3-4 dashes of Angostura bitters.
- 2 Top with enough cognac to cover the sugar and then fill up to the top with really cold champagne.
- 3 Add a disco ball stirrer (£7 for 20, Talking Tables) as a finishing touch.



→ **SILVER BIRCH**
Battery-operated
candle, £12, The
Contemporary
Home



↗ **GLITTERY GREYS**
Snowflake hanging
decorations, from
£3.49 each, Weyvale



Love
this



GIFT THAT KEEPS ON GIVING
A subscription to Not-Another-Bill, from £69, will wish a loved one a happy new year with selected presents through the post each month

THE EDIT

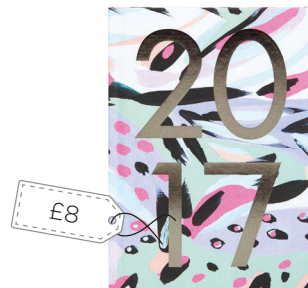
2017 diaries
Getting organised has never been so elegant



↑ **SPRING INTO ACTION**
17-month Rosa
planner, Papermash



↑ **SPOT ON**
Kate Spade gold dot
agenda, Quill



↑ **MODERN LOOK**
Abstract pattern diary,
Marks & Spencer



↑ **POSITIVE VIBES**
Glitter-finish diary,
Next Home



↑ FROSTY FEEL

Snowflake garland, £5.50, Talking Tables

ONE
LOOK
3ways

← TASTEFUL TARTAN

Red stripe side plate, £6; tartan plate, part of 12-piece dinner set, £18; fork, part of 16-piece gold Midas cutlery set, £20, all George Home

SEASONAL UPDATE

Burns Night

Commemorate Scotland's greatest poet on 25 January with an on-trend take on classic checks and tartan prints, stag motifs and rich red tones. This welcoming and warm palette works particularly well throughout the colder months – mix with other patterns for visual appeal.

→ FIRESIDE RETREAT

Balmoral chair, £249; stag cushion, £14.99; large tartan-trim hyacinth bowl, £12.99, all Dobbies



↘ CUT GLASS

Decanter pendant light, £75, Artisaniti



↓ ANIMAL MAGIC

Framed stag with bow tie, £175, Alexander & Pearl



↘ IN CHECK

Forest heart decoration, 75p, Wilko



↑ DEEP SEAT

Wolseley armchair in beige plaid, £549, Made.com



STOCKISTS
Turn to
p172

STYLING TIP

Decorate a metal bedstead with a bauble and a sprig of foliage, tied on with ribbon for a special finish to a guest room



Price patrol SCENTED CANDLES

Revive your rooms with the natural aromas of pine and eucalyptus



← **GOOD CHOICE**
Scented candle,
Sophie Allport



→ **LUXURY TOUCH**
Scented candle,
Jo Malone

STOCKISTS
Turn to
p172

PARTY RECIPE

SAUSAGE, CRANBERRY & CHESTNUT ROLLS

Savoury bites to impress your guests

- 1 Preheat oven to 190°C/fan 170°C/gas 5. Put 400g of pork sausagemeat into a bowl, along with 50g precooked chestnuts and 1 tbsp of chopped sage. Mix together.
- 2 Unroll a 320g sheet of puff pastry on a lightly floured work surface and cut in half lengthways. Spoon 2 tbsp cranberry sauce down the centre of each piece. Divide sausage mix in half and roll each into a long cylinder the same length as the pastry. Lay each half on top of the cranberry sauce.
- 3 Brush the edges of the pastry with egg. Fold over the sausage, then roll over so the join is underneath. Cut each piece into 8 rolls and transfer to two lined baking sheets. Brush more egg on top and bake for 20-25 minutes, until the meat is cooked.

For more recipes, visit waitrose.com/recipes

MAKES 16



HIGHLAND HIDEAWAY

Harby bedside chest of drawers, £249.99; Liberty bedstead, from £399.99; Gretel double duvet set, £20; Fergus double duvet set, £20; Brodie cushion, £13; Lennox cushion £13, all Dunelm

THE EDIT

Chinese New Year

Add a subtle taste of the Orient on 28 January



↑ **EASTERN ART**
Serving bowl, Marks & Spencer



↑ **INSTANT UPDATE**
Paper lantern, Flying Tiger Copenhagen



↑ **SIMPLE TO USE**
Set of four chopsticks, £3, Primark



↑ **CHINA TEA**
Oriental mug, Sainsbury's

Best buys

Shopping the NEW-SEASON TRENDS

150+
shopping buys

Get bright ideas for your home from the
latest ranges on the high street and online

COLOUR OF THE MONTH: WINTER ROSE

This soft, dusky pink
complements both classic
and modern schemes

30

Buy the best

35

28

39

30

31

33





JANUARY *on*

Be inspired and head online for seasonal

Cox & Cox



STACKABLE DESIGN
Frosted grey Christmas tree shelves, £45



→ **RUSTIC TIMEPIECE**
Weathered oak-effect clock, £60



↑ **TAPERED LEGS**
Bergen oak bedside table, £240



→ **ANIMAL MAGIC**
Resin stag's head, £40 for two



↑ **FUN SEASONING**
Pair of house salt and pepper shakers, £15.50



FOCAL POINT
Diamond-pattern woven cotton rug, £175



← **SHAKER LOOK**
Oak-topped sideboard, £650

Wayfair

→ **BRONZE EFFECT**
Eglo Vintage 1 bowl pendant light, £42.99



↑ **INNER GLOW**
Endon Lighting hammered bowl, £13.99



COSY & TACTILE
Mercury Row Elysian throw, £79.99



↑ **WINTRY WOODS**
Set of six Christmas scene baubles, £13.08



↓ **COPPER TONE**
Aulica pie serving tray, £30.99 (cake slice not included)



↑ **GLITZ & GLAMOUR**
Castleton Home shiny cushion cover, £15.99



↑ **MIRROR FINISH**
Schuller Baroque dining table, from £790.85



the INTERNET

updates to give your home a fresh look for the new year

Houseology



↑ **LINEN SEAT**
RV Astley Gala
high bar stool,
from £324

→ **GLASS CLOCHE**
Lene Bjerre
Lidia Bell
LED light,
from £39



STOCKISTS
Turn to
p172

→ **WOODY SCENT**
Tom Dixon
medium Oil
candle, £65



↑ **TWENTIES CHIC**
Set of eight assorted LSA Deco
wine goblets with gold trim, £100



CHILL OUT
Nick Munro
trombone
champagne
cooler, £175



↑ **IKAT INSPIRED**
Murmur soft grey cushion, £35



CONTEMPORARY COMFORT
Normann Copenhagen Swell
two-seater sofa, £1,849.90

Very



✓ **GOOD MIX**
Apollo copper
cocktail set,
£19.99



SPARKLY STORAGE
Set of two round
lidded boxes, £17



DAINTY DISPLAY
Sophie Conran
cake stand, £69.99

↘ **MINI FOREST**
Set of three wooden
trees, £19.99



↘ **GLITTER HANDLES**
Viners Dazzle 16-piece
cutlery set, £119.99



TOUCH ACTIVATED
Medina lamp, £39

**ON-TREND
DESIGN**



↑ **GOLD STAR**
Acropolis metal
bed frame, £305

FEATURE KERRY GARWOOD

Colour of the month

150+ shopping buys

Winter rose

This soft, dusky pink is a versatile shade that will complement both classic and modern schemes

STYLING TIP

Painting a wall just a few shades darker than your sofa will make more of an impact. Pick out cushions in similar tones to enhance the overall effect

→ DIAMOND PRINT

Ikat Kerela
linen cushion,
£44.50, Bohzaar



↑ SPELL IT OUT

Love script balloon,
£5.99, Candle & Cake



ROSY REFLECTION

Circum large smoked
pink mirror, £265, AYTM
at Made In Design

↖ SMALL WONDERS

Box of eight mini saucer
crackers, £7, Postbox Party

STATEMENT PIECE

Single sheepskin, £65,
Graham and Green



↑ LUXURIOUS FABRIC

Flopster sofa in clever velvet, from £1,195, Loaf



↑ LITTLE GEMS

Pair of glass knobs,
£4.99, H&M Home



FESTIVE FLAIR

Oxford Christmas tree (7ft), £65; baubles, from £1 each; cushions, from £5 each; crown tree topper, £7; battery-powered star lights, £10 each; Alistair buttoned sofa in mink brushed cotton, £750, all George Home



↑ HAND-PAINTED

Ambit pendant lamp, £139, Muuto at Rume



↑ ELEGANT SHAPE

Sannolik vase, £3, Ikea



↑ TAKE A SEAT
Walker chair, £169,
Holly's House

**NEXT
MONTH**
Kale green

STOCKISTS
Turn to
p172

← **TACTILE
TEXTURE**
Felt basket,
£25, Nordic
House

SWATCH Watch

Give your rooms a seasonal update



GLOSSY SHEEN

Covent Garden metro
tiles, £32.45 per sqm,
Walls and Floors

→ BLUSH HUE

Poetica Plains
polyester/
cotton/linen,
£24 per m,
Harlequin

PRETTY PETAL

Pale cyclamen matt
emulsion, £32 per 2.5ltr,
Laura Ashley

STAR BURST

Estella wallpaper by
Nina Campbell, £88 per
10m roll, Osborne & Little

THE LOOK IN ONE BUY



↑ ETCHED GLASS

Tealight holder, £7.50,
The Contemporary Home



← **STELLAR BREW**
Teapot, £29.39,
Finenordic



← **BOLD BULBS**
Zinc carnival light,
£65, Cox & Cox



← **ANTIQUE FINISH**
Lexington
bottle
stopper, £19,
Houseology



↗ **PRETTY VOTIVES**
Tealight holders, £4.95 for two,
Notonthehighstreet.com



↑ **LITTLE LIBRARY**
Sling bookcase, £70,
Great Little Trading Company



Style spotlight

Stars

Add sparkle throughout your home with these twinkly shapes



GOING FOR GOLD
Metallic plate,
£4.99, H&M Home

↖ **PARTY POPPER**
Confetti cannon
shooter, £1.99,
Ginger Ray



SOFT TOUCH
Antares throw in
Merino wool, £179.95,
Tori Murphy



**CUT-OUT
DETAIL**
Bedside table,
£69, The White
Lighthouse



← **RUSTIC
STYLE**
Set of six
coasters, £13,
Sass & Belle



STOCKISTS
Turn to
p172

3 OF THE BEST
wall coverings



↑ **SELF ADHESIVE**
Temporary wallpaper,
from £29.80
for 52.5x122cm,
Betapet at Etsy



↓ **OPULENT APPEAL**
Star Anise Sahara tiles,
£34.94 each, Fired Earth



← **DELIGHTFUL DESIGN**
All Star wallpaper in
gunmetal, £81 per 10m
roll, Barneby Gates

NEXT
MONTH
Hearts

FEATURE JESSICA TAVERNER

Live the trend Cosy cabin

150+ shopping buys

Recreate the snug feel of a mountain retreat by layering wood, knits and fur, and adding dark, rich colours and hints of copper



↓ **TWENTIES INSPIRED**
Gatsby 12-piece dinner set, £34.99, Very



↓ **ANTLER EFFECT**
Ramure five-branch chandelier, £299, Maisons du Monde

Dining room



NORDIC FLAIR

Decorations, from £6 each; faux-fur throw, from £50; set of two deer tealight holders, £12; lantern, £20; set of three Oriana tealight holders, £14; Bianco 12-piece dinner set, £18; Hartford bench set, £599, all Next Home



← **GOLD PLATED**
Stainless steel 24-piece cutlery set, £34.99, Argos

Living room

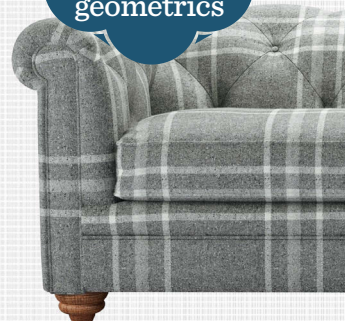


Stylist's note

'The starting point for this rustic scheme is natural wood panelling – it provides the ideal backdrop for chunky furniture and metallic decorations'

Ali Lovett, Style Editor

NEXT MONTH
Modern geometrics



STYLING TIP

Make your own garland by draping rope from two hooks. Twist around fairy lights and use pegs to hang festive lettering or pictures from it



WARM & WELCOMING

Flocked Whistler tree (H7ft), £180; decorations, from £6 each; snowflake lantern, £30; metal lantern, £50; cinnamon and ginger candle, £16; stag cushion, £25; white stripe faux-fur throw, £120; glass string lights, £30; gold reindeer wrap, £5, all House of Fraser

← IN THE WILD

Stag-print cushion, £8, Matalan

COUNTRY CHECK

Patrick sofa in peregrine plaid wool, £1,990, Sofa.com



↑ RUSTIC LOOK

Niklaus tree-stump side table, £149, La Redoute

STOCKISTS
Turn to
p172

Bathroom



SPA STYLE

Bath towel, from £12; copper pedal bin, £19; lotion dispenser, £10; toothbrush holder, £9; Solstice throw, £12; split willow basket, £10, all JD Williams



↙ **AMBER ACCENT**
Mustard yellow mini vase, £3, H&M Home

→ **FAUX FLOWER**
Gladiolus stem, £3, Ikea



↑ **SOFT TOUCH**
Cotton towels with border, from £3.99, Zara Home



↑ **SIMPLE DESIGN**
Beech walnut step, from £77, Naturehome

FEATURE JESSICA TAVERNER

آموزشگاه انعکاس منبع جدیدترین اطلاعات، مقالات و دوره‌های آموزشی دکوراسیون داخلی

Enekas.Academy

Enekas.Academy

Smart solutions



Guest bedroom

Create a welcoming retreat for visitors over Christmas and New Year with these stylish ideas



↑ CLOTHES COLLECTION

Lend a boutique hotel feel with a retro-print washing bag that will provide your guests with plenty of practical storage. £6.99, H&M Home



↓ SLUMBER PARTY

Pre-washed for softness, this understated dusky pink bedding is a good fit for any neutral scheme. From £125 for a single duvet cover, The Linen Works



↑ BRIGHT IDEA

Free up precious room on a bedside table with a smart clip-on light. £149, Original BTC

↑ DUAL PURPOSE

If space is at a premium, try the Carter dressing table – it opens up to reveal a mirror or folds down to create desktop space. £499, Dwell



QUICK CHANGE

Seasonal throws add texture as well as extra warmth. Normann Copenhagen Sprinkle quilted bedspread in sand £69.90; Bloomingville grey knitted throw, £209, both Amara



↓ MULTIFUNCTIONAL ELEGANCE

More than a side table, this contemporary design can double as a magazine rack and has a removable tray top. £139, Ross & Brown



NEXT MONTH
Bathroom

آموزشگاه انعکاس منبع جدیدترین اطلاعات، مقالات و دوره‌های آموزشی دکوراسیون داخلی

Enekas.Academy

Enekas.Academy

STYLE UPDATE

Make the bed even more comfortable and cosy by arranging cushions and throws in soothing accent colours against a padded headboard



↓ MODERN LOOK

Perfect for keeping make-up and jewellery in one place, the Vana beauty organiser also comes with a useful removable mirror. £35, Umbra



← ON-TREND COPPER

Hang these distinctive coat hooks over the door for extra storage, £12, Habitat



↑ WAKEY WAKEY

Help your guests keep track of time with a Covent Garden alarm in dreamy pink, £25, Newgate Clocks



↑ ELECTRIC DREAMS

Machine-washable and inexpensive to run, this heated faux-fur throw will take the chill off winter nights. £99.99, Lakeland

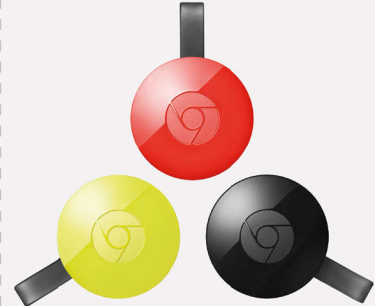
↓ SLEEK FRAME

A clothes rail is a great alternative to a bulky wardrobe. Featuring industrial copper details, the handy shelves and castors can be removed easily if needed. £450, Urban Outfitters



3 INNOVATIVE HI-TECH BUYS

Improve your guests' stay with these clever gadgets



↑ INSTANT ENTERTAINMENT

Google Chromecast plugs into a HDTV's HDMI connection and allows users to stream favourite films and shows via Wi-Fi from a smartphone or tablet. £30 each, Curry's



STOCKISTS
Turn to
p172

↑ BATTERY POWER

Mobile leads are history thanks to the Riggad lamp and charging pad, complete with USB port. Simply place a smartphone on the cross to power it up. £49, Ikea



↑ CABLE-FREE

Link rose gold Beats headphones to the TV and guests can stay up late without disturbing the rest of the house. Impressively, battery life is a whopping 40 hours. £249.95, Apple

1 NEW YEAR MESSAGE
Cushion cover, H&M



2

CUTE COPPER
Dog-shaped cookie-cutter, Sainsbury's Home



MODERN DESIGN



3

GEOMETRIC PATTERN
Candle, Primark



5

DAILY GRIND

Pestle and mortar, Homesense

4

SOFT TOUCH
Hand cream, Marks & Spencer



10 under £5

Last-minute Christmas gifts that won't break the bank

150+
shopping buys

6

PERSONAL PRESENT

Dad's Tiny Tin, Campus Gifts



9

POCKET SIZED

Notebooks, John Lewis



7

MOROCCAN INFLUENCE
Mug, Wilko

8

FLOWER POWER

Meadow oven glove, Dotcomgiftshop



STOCKISTS
Turn to p172

10

TRINKET TRAY

Ring dish, Lisa Angel



FEATURE JESSICA TAVERNER

Spend & save at IDEAL HOME SHOW SHOP

This exclusive 10% discount offer gives you the chance to buy these great products at fantastic prices. Simply go online to idealhomeshowshop.co.uk

10% OFF

Use online code
GHJAN10 at
the checkout for
your exclusive
Good Homes
discount



BOTTLE CANDLESTICKS

Practical and elegant, these vintage-look designs will softly illuminate your festive scheme. Perfect for a console or alcove, each is decorated with a hanging heart and traditional gingham ribbon bow.

- H21xW7.5cm



SCANDI CUSHION

Create a comfy corner for reading and relaxing during the festive season with this cosy accessory. Home-spun from wool and felt, the pretty red-and-white Nordic design is not only on-trend this Christmas but is a classic style that will stand the test of time year after year.

- H34xW34cm



MESSAGE OF JOY

Make a statement at parties with this stylish white-and-gold festive sign. The elegant typography will send your best Yuletide wishes to all your guests, so stand it on a mantelpiece or shelf, or hang on a wall where everyone can see it.

- H24xW24xD4cm

For more great buys & ideas, go to idealhomeshowshop.co.uk

آموزشگاه انعکاس منبع جدیدترین اطلاعات، مقالات و دوره‌های آموزشی دکوراسیون داخلی

£6
£5.40

PROSECCO GIFT BAG

Give your party host a bottle of the sparkly stuff in this fun carrier. Made from canvas with a glittering gold print and practical handles, it can be used again and again when the recipient buys their favourite tippie.

- H44(including handle)x18cm

£18
£16.20



RED FESTIVE JUG

Whether used for pouring your Christmas Day gravy or dispensing water, mulled wine or cocktails, this cheerful Nordic-style pitcher will make a great dining table centrepiece. Made from glazed ceramic and embossed with a festive reindeer and snowflake design, it's also ideal for displaying arrangements of winter foliage in.

- H21xW19cm(including handle)

HOW TO ORDER

ONLINE Simply go to idealtheshowshop.co.uk.

Enter the coupon code GHJAN10 at the checkout to claim a 10 per cent discount on products shown. Offer valid from 25 November 2016 to 31 January 2017. Prices shown correct at time of print, but may be subject to change. **DELIVERY** Subject to availability. Check the product pages online for delivery time and any charges. Items from different sellers may be dispatched separately. Mainland UK delivery only. Postcode exclusions may apply for delivery of furniture. **RETURNS** If you are not entirely satisfied with your order, you will be able to return the item within seven days for an exchange or full refund.

£10
£9
each

TEALIGHT HOLDERS

Go gold with your Christmas decorations and add some sparkle to this year's New Year celebrations with these stylish votives. Made from glass with a dimpled metal base, simply pop a small candle inside to add some shimmer and shine to your dinner parties.

- H8xDia7.5cm

To order, visit idealtheshowshop.co.uk & enter code GHJAN10

آموزشگاه انعکاس منبع جدیدترین اطلاعات، مقالات و دوره‌های آموزشی دکوراسیون داخلی



GoodHomes

subscription form

SEND TO Good Homes Subscriptions, FREEPOST
RTLQ-UCJR-ETCK, Intermedia, Abbey House,
Clarendon Road, Redhill, Surrey RH1 1QZ

YES! I would like to subscribe to Good Homes

☐ UK Direct Debit:

£21.99 for 12 issues a year, saving 50%

☐ Credit/debit card/cheque/postal order:

£23.99 for 12 issues a year, saving 45%

YOUR DETAILS

Mrs/Ms/Miss/Mr First name

Surname

Email

Address

Postcode

Telephone

TO GIVE A GIFT SUBSCRIPTION

Mrs/Ms/Miss/Mr First name

Surname

Email

Address

Postcode

THREE EASY WAYS TO PAY

1 Simply complete the Direct Debit instruction below

2 I enclose a cheque/postal order made payable to Media 10 Ltd for £23.99

3 Please debit my:

☐ Mastercard ☐ Visa ☐ Visa Debit ☐ Maestro (UK only)

Card no

Start date (Maestro only)

Issue no

Expiry date

Signature

Date

£21.99 PER YEAR BY DIRECT DEBIT



Instruction to your bank or building society

to pay by Direct Debit. For office use only.

Originator's Identification number - 693916

Name of bank

Address of bank

Postcode

Sort code

Account No

Please pay Media 10 Ltd Direct Debits from the account detailed in this instruction, subject to the safeguards assured by the Direct Debit Guarantee. I understand that this instruction may remain with Media 10 Ltd and, if so, details will be passed electronically to my bank/building society.

Signature

Date

The Direct Debit Guarantee:

This guarantee is offered by all banks and building societies that take part in the Direct Debit scheme. The efficiency and security of the scheme is monitored and protected by your own bank or building society. If the amounts to be paid or the payment dates change, Media 10 Ltd will notify you 10 working days in advance of your account being debited or as otherwise agreed. If an error is made by Media 10 Ltd or your bank or building society, you are guaranteed a full and immediate refund from your branch of the amount paid. You can cancel a Direct Debit at any time by writing to your bank or building society. Please also send a copy of your letter.



3 EASY WAYS TO SUBSCRIBE

* **ONLINE** goodhomessubscriptions.com/JANAD17

* **CALL** 01293 312153 quoting code JANAD17

* **POST** using the form on the left

*UK subscriptions only. Offer expires 2 February, 2017. Lines open 9am-5pm, Monday-Friday. All show tickets will be included within the March, May, October and November issues throughout the subscription course. Our minimum subscription term is 12 issues and cancellations or refunds are not possible until the end of this initial period, when you have 30 days to notify us. Please note that tickets for our events may be limited to weekdays only. For full terms and conditions, visit goodhomes-magazine.com/website-t-cs



آموزشگاه انعکاس منبع جدیدترین اطلاعات، مقالات و دوره‌های آموزشی دکوراسیون داخلی

Enekas.Academy

Enekas.Academy

THE GIFT *that lasts* ALL YEAR

12 ISSUES FOR JUST £21.99*

Subscribe & receive:

- ❄️ **A saving of up to 50%**
off the usual retail price
- ❄️ **Free delivery** direct to your door
- ❄️ **Get your copy** before the shops
- ❄️ **Free digital access**, worth £19.99

PLUS



5 free
show tickets included
in your future issues*



6 free supplements per year

WIN A SHOPPING SPREE AT DUNELM

Treat your home to a fabulous new-year makeover with a £1,000 gift voucher to spend at the homeware retailer

Hosting and celebrating over the festive season sees our homes look their very best; glittering, bejewelled spaces full of charm. So, we've joined with Dunelm to help extend the magic into the new year, with five £1,000 gift vouchers to spend in store.

At Dunelm you'll find all you need to refresh and revive your interiors, whatever your taste or budget. Bring a seasonal touch to your rooms with soft furnishings, fun accessories and decorations, as well as kitchenware and crockery

to dress your table for family feasts. A range of stylish bedding and faux-fur blankets are perfect for updating bedrooms, and luxury sheepskin rugs are just the thing for creating a cosy, cocooning living area.

Dunelm can even provide the little extras to help give your home sparkle, with an impressive collection of faux flowers and foliage, and twinkling fairy lights and candles.

For inspiration and ideas, visit one of the 158 stores nationwide or look online. **Dunelm 0345 165 6565; dunelm.com**

**FIVE
£1,000
PRIZES**

SILVER SHEEN

Highland check curtains from £64.99; flock deer figurines from £3 each; Sidmouth nest of tables, £199.99; Henley double bed, £449.99; Hotel silky soft throw, £19.99; snowflake cushion, £13; stag head double duvet cover set, £12

HOW TO ENTER

To be in with a chance of winning, visit goodhomesmagazine.com

Dunelm
The Home of Homes

Valid from 25 November 2016 to 2 January 2017

Terms and conditions apply. For full details visit goodhomes-magazine.com/website-t-cs

Styling your rooms for THE NEW YEAR

Discover this season's latest looks, simple
craft ideas and gorgeous colour schemes



ROMANTIC CHIC
Create a glamorous
look for the celebrations
with muted hues and
silver-toned glassware

48



57

INTERIOR DESIGN COURSE

Easy updates to impress guests
over Christmas and beyond



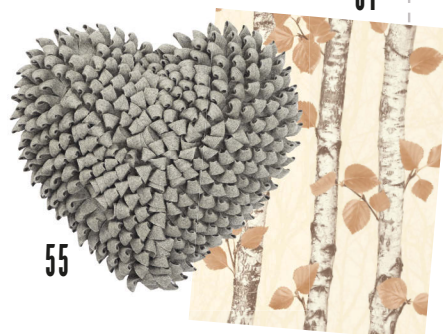
65

MODERN METALLICS

Throw a party to remember
with eye-catching DIY touches

Get the look

61



55

Romantic CHIC

Create a glamorous look for your
New Year celebrations with muted
hues and silver-toned glassware

❄️ FESTIVE TIP ❄️

Dress your mantel for an
occasion by bringing in
berry and foliage cuttings
- intertwine with fairy
lights, baubles and
paper roses

Love this room

- ❄️ To give the impression of a wider space, hang a mirror lengthways on the longest wall - this will also help bounce light around the room, making it feel larger.
- ❄️ Choose French-inspired furniture or update your existing pieces by painting them with grey or cream chalk paint to add character to this elegant scheme.
- ❄️ Contrasting textures are key to livening up a neutral palette. Mix ruffled fabrics or lace with a shimmering rug or unfinished wooden flooring for maximum impact.

Turn the page to get the look

Love this
pattern



Subtle blooms

This faded floral wallpaper has a pale, metallic colourway – ideal for creating a dreamy backdrop



DECORATING WITH MUTED METALLICS

PEARLY SHEEN

Craig & Rose
Opulence special
effect paint in ivory
shimmer, £9.27 per
250ml, B&Q

BLUSH TINT

Rust-Oleum
copper metallic
spray paint,
£4.99 for 150ml,
Homebase

SHINY SILVER Perfect for making any scheme sparkle – spray evenly to upcycle existing accessories or look for mercury glass, which reflects light around the room.

ROSE GOLD Use this shade as an accent colour for a modern twist. Apply to statement pieces, or even just on the handles of furniture, and find matching accessories to finish off the look.



❄️ WHERE TO BUY ❄️

PREVIOUS PAGES Eglantine **wallpaper**, £56 per 10m roll, Wallpaperdirect. For a similar **carpet**, try Carpetright. For a similar **rug**, try John Lewis. For a similar **dining table**, try Grange. For similar **chairs**, try Exclusive Interiors. For similar **cushions**, try Etsy. For a similar bunch of **hearts**, try Notonthehighstreet.com. For similar **chests of drawers**, try Brissi. **Mirror**, £199, Next Home. **Frames**, from £1.40, Tesco **ON LEFT CHEST** For a similar silver **lidded jar**, try Maisons du Monde. For a similar **candle snuffer**, try JD Williams. Mercurised glass **candlestick**, £17.99, Zara Home. Set of six grey **candles**, £6.50, Nordic House. For a similar ribbed mercury **tealight holder** and large **bauble**, try Notonthehighstreet.com. For a similar **bonbon jar**, try Houseology.

Set of six Hollywood Connoisseur **crackers**, £29.50, Marks & Spencer **ON MANTELPiece** For a similar **garland**, try Very. For similar battery-operated **fairy lights**, try Powerbee. For **paper roses** and **candle holders**, try John Lewis. For similar **pillar candles**, try Caroline Love Interiors **ON TABLE** For similar bouquets of **artificial flowers**, try Maisons du Monde. For a similar dome **candle holder** (used as vases), try Nkuku. For similar large **candlesticks**, try Pretty Maison. For similar silver **candles**, try Tesco. For a similar **bowl** on stem, glass **cupcake stand** and **decanter**, try Parlane International. Antique silver glass **tealight holders**, £2.95 each, Dotcomgiftshop. **Doilies**, £5.29 for 120, Lakeland. Six-piece **cutlery set**, £26,

RE. Mink Rim **dinner plates**, £1.63 each, Homebase. For a similar glitter **side plate**, try Wilko. Vintage silver **glass bowls**, £6.95 each, Nordic House. **Nougat**, £6.50, Waitrose. For similar **champagne glasses**, try House of Fraser **ON RIGHT CHEST** For a similar **tray**, try Homesense. For similar **gold rim glasses**, try House of Fraser. For a similar silver **jug** and **bowl**, try eBay. **Ice bucket**, £189, Brissi. **THIS PAGE Dinner plate, side plate**, vintage silver **glass bowl** and **nougat**, as before. For similar bauble **place card holder**, try Etsy. For similar **napkin rings**, try Party Packs. For a similar **cake stand**, try Amazon. For similar **biscuits**, try Sainsbury's. For similar **roses**, try John Lewis. For a similar **silver vase**, try Brissi. For similar **long-handled spoons**, try eBay

GET THE LOOK

Create a welcoming space for entertaining with these key pieces



OVER MANTEL
Abrielle mirror, £149,
La Maison Chic

↘ NICKEL PLATED

Amore heart toast rack,
£27.95, Cuckooland



↗ **ANTIQUE EFFECT**
Mercury glass candle holder,
£24, Sweetpea & Willow



← PRETTY PORCELAIN

Dotty 12-piece dinner set, £42.99,
Lakeland



↑ **CURVED LINES**
Chamonix dining table, £599,
Crown French Furniture

STOCKISTS
Turn to
p172

MOODBOARD MASTERCLASS

Romantic chic

BUDS & BLOOMS

Grace viscose-mix fabric in pale grape, £36 per m, Laura Ashley

MATT FINISH

Chalk paint in Paris grey, £18.95 per 1ltr, Annie Sloan

CREAMY HUE

Wool-rich deluxe velvet carpet in mascarpone, £45 per sqm, John Lewis

This scheme is about combining calming neutrals with barely there mauves. Use feminine, patterned wallpaper as your starting point and pick out the darker tones and paint the main pieces of furniture in these. Finish with a thick carpet in a similar shade as the background.

↑ PERFECTLY POLISHED

Simple sweets and biscuits look luxurious when served in a silver tiered cake stand

↖ SNOW WHITE

Echo the flowers in your table bouquets by placing delicate paper roses at each place setting

5 of the best WALLPAPERS

Choose finely detailed designs in subtle colours



↑ LOVE HEARTS

Olivia Blush, £10 per 10m roll, Wilko



↑ SHIMMERING LEAVES

Quod II Glace, £48 per 10m roll, Paper Moon



↑ LARGE-SCALE PRINT

Madison Rose in soft grey, £16.99 per 10m roll, Ilovewallpaper



↑ DELICATE DAMASK

Equus 250 C02, £48 per 10m roll, Paper Moon



↑ TOUCH OF GLITTER

Sweet Cherry in white sparkle, £15.99 per 10m roll, Inspired Wallpaper



Love this room

- * Complement Parisian-inspired style with vintage touches – frame old newspapers and handwritten postcards or letters to echo the script wallpaper.
- * Create a focal point with a single statement piece that has plenty of sparkle. Introduce in the form of an oversized glass chandelier to add wow factor.
- * Prevent this look from becoming too fussy by adding aged linens to contrast with all the silver.

Turn the page to get the look

Love this pattern

Calligraphy style

A fine italic typographical print is a great alternative to decorating with floral patterns



refinement and
difference between
the worthless but
other words, to be
they, not rich" The
care of them, but
the man who is
that his children
"to
to
happen

Decorating Seasonal looks ❄️

Delicate CHARM

Combine different depths of grey with floral motifs and sparkling accessories for a soft and feminine living scheme

FESTIVE TIP

Cover gifts in offcuts of script wallpaper and newsprint. You could also make paper wreaths and arrange on top of a console table



GOOD IDEA

Be ready to welcome in the new year by setting up a tray of glasses, bubbles and sweet treats in advance for when the clock strikes midnight. Add a few silver baubles as well to provide some celebratory glitz



DECORATING WITH ELEGANT PATTERNS

FRENCH SCRIPT Turn on the charm by incorporating refined typography into your home through the use of wallpaper, or use printed fabric to reupholster a footstool.

FLORAL PRINTS Opt for decorative patterns that will inject interest into the room and work as a stunning backdrop to showcase your best silver and glassware.



❄️ WHERE TO BUY ❄️

PREVIOUS PAGES For similar **wallpaper**, try Spoonflower. For a similar **chandelier**, try Melody Maison. For a similar **sofa**, try Sofasworld. Velvet Belouga black **cushion**, £15.99, Maisons du Monde. For a similar **round cushion** and **glass bowl** try Dunelm. For a similar silver **console table**, try Wayfair. **Paper wreaths**, stylist's own. For similar bronze **beads**, try eBay. For a similar **bonbon jar** and **baubles**, try John Lewis. Antique silver glass **tealight holder** and mercurised glass **candlestick**, as before. For a similar script **footstool**, try Dunelm. For a similar **rug**, try Next Home. For a similar mercury **bowl**, **goblet** and **glass**

box, try Notonthehighstreet.com. For a similar brown **notebook**, try Hobbycraft. For a similar **silver tray**, try Wayfair. For similar script **wrapping paper**, try Marks & Spencer **ON CONSOLE** Glass bowl, £30, The White Company. For a similar **bonbon jar**, try John Lewis. For a similar selection of **baubles**, try Nkuku. For a similar silver **lidded jar**, try Maisons du Monde. For a similar **tealight holder**, try Waitrose Garden. Silver picture **frames**, from £1.40 each, Tesco. For a similar teardrop **decoration**, try Nkuku. For similar **hanging hearts**, try Dunelm. For a similar snowflake **bauble**, try John Lewis. For a similar peacock

decoration, try eBay **THIS PAGE** Beregere **screen**, £269, The Blue Goose. Rochelle French **armchair**, £395, Within Home. **Angel wings**, £35, Cox & Cox. For similar **cushions**, try Dunelm. For similar **boxes**, try Paperchase. Ribbons, from a selection, Hobbycraft. For similar **cards**, **notebook**, and **gift tags**, try Papermash. For a similar **photo album**, try Paperchase. For similar **hanging decorations**, try Sainsbury's **TRY THIS TWIST** Alistair **seat**, £745; fox **cushion**, £8; emerald velvet **cushion**, £8; Emerald **cushion**, £7; damask **cushion**, £8; barn **candle holder**, £8; **decoration** from a selection, all George Home

GET THE LOOK

Furniture and accessories to add sophistication to your interiors



LOOPED FELT
Ruffled heart cushion,
£19.99, Dunelm



PROVENCAL STYLE
Garrigue Paulownia
drawers, £269.90,
Maisons du Monde



← PRETTY STORAGE
Set of two
Josette dove
grey boxes,
£25, Laura
Ashley



→ FEATHER LIGHT
Vita Copenhagen
Eos lamp, £160, Nunido



← STYLISH SHAPE
Sark chair
in rustic
herringbone,
£750,
Sofa.com

STOCKISTS
Turn to
p172

TRY THIS TWIST... *Moody blue*

For a more masculine take on this look, try introducing dark denim shades through the use of paint and furniture. Opt for cosy wool-upholstered seating, twinkly fairy lights and sprigs of evergreens for a festive touch.

Finish by adding a pop of electric blue behind grey cushions to lift the scheme.

Stylist's note

'This look is about combining contrasting fabrics and materials – soft velvet

with ruffled chiffon, shining mercury glassware with aged parchment papers – to create a luxurious and textured effect'

Ali Lovett, Style Editor



5 of the best FABRICS

Pick designs with a slight Gallic twist



↑ BLOSSOM MOTIF
Natural Mariella cotton in
natural, £9.99 per m, Dunelm



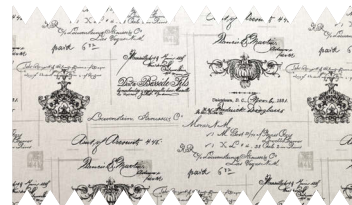
↑ RUSTIC ROSES
Emmeline cotton/linen mix
in grey, £24 per m, Annie Sloan



↑ CHIC SCROLLS
French vintage cherub combed
cotton, £17.05 per yard, Zazzle



↑ MANICURED GARDEN
Topiary linen in charcoal,
£21 per m, Just Fabrics



↑ FINE FONTS
Clarke & Clarke Manuscript linen,
£14.50 per m, The Millshop

GOOD HOMES

Interior DESIGN COURSE

Planning a project, but not sure where to start? Dreaming of studying interior design? You can learn the basics in your own time, even if you're a beginner, with the inspirational Good Homes Interior Design Course

PART 24

Instant updates to impress guests

- + Add metallics for seasonal sparkle
- + Assemble a cosy retreat for visitors
- + Make your hallway more welcoming
- + Devise a bar area for a celebration
- + Hang a show-stopping chandelier
- + Use wallpaper to update an alcove
- + Create an outdoor room for sunny days
- + Introduce a sociable kitchen island
- + Refresh your bathroom tiles and tub
- + Choose flexible space-saving furniture

Craving a new-year interiors revamp? The festive season brings plenty of visitors and house guests – which gives you the perfect excuse to refresh your rooms and transform your surroundings. It doesn't need to be a time-consuming task, however. Whether you've put aside a whole weekend to dedicate to DIY or just an hour, our easy-to-achieve projects, simple ideas and clever styling tricks will give every room wow factor and really impress family and friends.



USE AN HOUR FOR A quick fix

Short on time? Whether you're throwing a dinner party or entertaining family, it's easy to create an extra-special look, fast, with some carefully chosen accessories, clever styling and finishing touches.

TIME-SAVING TIP

Add a garland to your tree – it not only offers interest and sparkle, but it can also be wound around the branches in an instant

SPRUCE UP A NEUTRAL SCHEME WITH METALLICS

On-trend copper makes the perfect festive addition to a pale living space, while still keeping the look grown-up and glamorous. Use a mix of different metals for a modern look: combine high-shine bronze baubles with sparkling silver and edgy steel tones.

Izzy two-and-a-half-seater sofa in canvas, £1,600; Izzy armchair in heron, £870, both Sofa.com. For similar vases, try Holly's House. For similar baubles, try Paperchase





QUICK IDEA

Cushion covers are affordable items that can be changed in an instant to give a scheme a festive twist or an on-trend update. Fold away your existing designs and try H&M Home, Ikea or Dunelm for inexpensive seasonal-themed creations.

MAKE GUESTS FEEL AT HOME

Invest in cosy new duvets, pillows and bedspreads, display them in a cabinet and encourage visitors to use to whatever they need – simple and effective.

Sealy Select range, from £12.99 for a pillow, Sleepy People



LIFT A DINING TABLE

Layer up crockery with napkins and use different heights of inexpensive pillar candles en masse for a easy way to create immediate impact.

Tablecloth, £18; plates, £4 each; bowls, from £3.50 each; napkins, £4 for two, all Sainsbury's. For similar candles, try St Eval Candle Company



3 OF THE BEST dinner sets



← **OMBRE EFFECT**
Marble blue
16-piece
dinner set,
£39, Very

→ **FESTIVE SPARKLE**
Monsoon
16-piece
filigree silver
dinner set,
Denby



← **DECO DESIGN**
Decadence
12-piece
dinner set,
£45, Next
Home

How to: create a retreat

■ If a guest is staying for more than a night, providing them with a peaceful and snug place to escape from festive celebrations is a thoughtful touch. Begin by zoning off their area with a rug next to a fireplace or sunny window.

■ Next, add a comfortable armchair – with a cosy cushion and warming throw for practical decoration – and a useful side table for drinks and snacks.

■ Finish with a selection of books and board games to provide entertainment.

Croft Collection Melrose armchair, £949; reindeer cushion, £20; Croft Collection snowhill rug, £200; Articulate board game, £28.30, all John Lewis



SPEND AN AFTERNOON ON AN easy update

Simple decorating and DIY projects can be finished in a matter of hours, without the need for a big overhaul. From paint and wallpaper to storage and flexible furniture, try these easy ideas to add interest to any room.



REFRESH YOUR HALLWAY

The entrance to a home can seem like an awkward area to decorate, but it's easy to transform it into somewhere with plenty of character by being clever with paintwork.

Use masking tape to ensure a block of colour round the bottom of the walls has neat edges; when dry, add a shelf bench and create extra storage with hooks.

Colours feature wall metallic sheen emulsion in copper, £11.73 per 1ltr, B&Q

How to: create a pop-up bar

- If you're throwing a New Year's Eve party, an area to serve drinks from is a must. Start by painting a small wall in on-trend midnight blue (try Farrow & Ball's drawing room blue).
- Add a brass-coloured trolley (for similar, try Oliver Bonas) and fill its shelves with cocktail shakers and Art Deco-inspired champagne coupes (for similar, try Next Home).
- Finish by decorating behind your bar with gold paper garlands, fans and balloons (for similar, try Meri Meri).

Star lights, from £25 each; Biba gold ice bucket and tong set, £45; set of four Linea margarita glasses, £35; Living by Christiane Lemieux metal tray, £48; Biba gold cocktail shaker, £25; gold and white nutcrackers, £25 each, all House of Fraser





QUICK IDEA

Look out for time- and space-saving additions when extra guests come to stay – modern air beds inflate in under one minute and can be fitted with standard-size sheets for minimum fuss. Try the Aerobed double divan mattress, £180, John Lewis.

HANG A CENTREPIECE

Suspend a show-stopping decoration to make a dinner party look extra-special. Cut five 9cm lengths of 2.5m copper pipe with a Multi-tool from Bosch, then join together with T-joints and elbows (try B&Q). Use chains to suspend your creation from ceiling hooks. Then fit candles in the ends of the pipes so they act as a chandelier. Adorn with foliage to finish.

TIME-SAVING TIP

Look to your own garden or conservatory to source leaves: olive, ivy, eucalyptus and fir will add a fragrant freshness



REVAMP AN ALCOVE

Use a wallpaper's colour and pattern to revive a recess. A delicate, faded design won't overwhelm the space.

Denim collection wallpaper 17591, £29.95 per 10m roll, Galerie

3 OF THE BEST

feature wallpapers



PRETTY PERCHES

Standing Ovation Persico in turquoise/navy, £62 per 10m roll, Harlequin



GLITTER DETAIL

Albany Birchwood in autumnal gold, £16 per 10m roll, Wallpaperdirect



SUBTLY SCANDI

Familj Ture in grey, £68 per 10m roll, Sandberg Wallpaper

IN A WEEKEND CREATE A new look

It's amazing what you can achieve in just a couple of days when you have a simple-but-effective update in mind. Get your home ready for the new year with these easy decorating projects that will make any space magical.





QUICK IDEA

If you're keen to upcycle existing furniture but don't have the time for sanding and painting, why not use a vinyl film instead (try Decowall)? Easy to apply to any surface, just cut to size and stick on to add colour, pattern or even a wood or marble effect.

TIME-SAVING TIP

Paint a magnetic chalkboard wall (try Dulux) and write on a daily menu so everyone can help with food preparation

MAKE A SOCIABLE KITCHEN

A layout with an island is ideal for entertaining. Add a standalone unit with a worktop and install a pendant light above – it will create place for preparing meals and gathering everyone around.

Recycled wood centre island, £1,199; Luke shelf unit, £36.99; metal wall unit, £19.99, all Maisons du Monde



UPDATE A GUEST ROOM

Cover walls with wood boards (try The English Panelling Company), and add a peg rail and layers of new bed linen for a hotel-chic look.

Headboard, from £430; throws, from £110; side table, £355, all Neptune

STOCKISTS

Turn to p172

3 OF THE BEST bedding

GIRLY GLAMOUR

Butterflies double duvet cover, £75; pillowcase, £39, Secret Linen Store

FLY AWAY

Swallow-print double duvet cover and two pillowcase set, £13, George Home

LUXURY BUY

Lexington holiday sateen duvet cover, £179; pillowcases, £39 each, Houseology

How to: restyle a bathroom

- First, update your tiles: if they are in good condition, try using a black grout pen (try Amazon) to revive what's there. If not, re-grout in a dark colour.
- Revamp a cast-iron tub by painting the underside in a deep grey shade. Prepare the surface by sanding down with emery paper, de-grease with a cloth dipped in white spirit, then apply

an oil-based metal primer (try B&Q). Brush on two coats of metal paint, following the instructions on the tin.

- Finish with industrial-inspired accessories – wire baskets and lettering spelling out appropriate words work well.

Soap dispensers, from £6.99 each; tumblers, £4.99 each; wire word, £6.99; small wire basket, £6.99, all Dunelm

MAKE IT SPECIAL

GOOD
Idea

Modern metallics

Throw a party to remember, thanks to these sparkling DIY touches

SHINE ON

Find out how to bring a touch of golden glamour to your table overleaf



Gilded balloons

Try this clever twist for a table with wow factor

- 1** Fill large balloons with helium to use as a table centrepiece or to tie to chair backs. For place settings, half-fill smaller white balloons.
- 2** Apply PVA glue to the bases of some of the large balloons and lay on sheets of gold foil paper (try Hobbycraft) with your fingers.
- 3** Finish by tying on curls of gold metallic ribbon to some of the balloons, and attach the others to wine glasses acting as weights.

Gold leaf look

Layer up the foil so that it starts to peel away in places – it adds to the decoration's hand-finished effect



Perfect presents

Have beautifully wrapped favours waiting at place settings for family and friends

- 1** Take several sheets of tissue paper or gift wrap in assorted colours or patterns. You could also try creating your own designs, by stamping on motifs or drawing them freehand.
- 2** Cut to various shapes and sizes – small squares or rectangles – and then lay them out on a flat surface, fitting the pieces together like a jigsaw puzzle.
- 3** Use decorative washi tape (try MT tape) to fix them together, to create a patchwork effect. Now use this to wrap a small gift – a mini box of chocolates or sweets works well.

Light-bulb baubles

Transform these ordinary objects into tree decorations

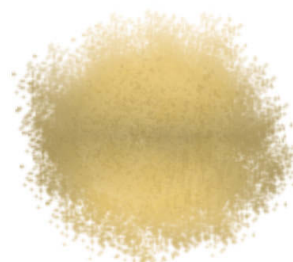
- 1 Take a mixture of glass screw-in lightbulbs of different shapes and sizes and ensure they are clean and free of dust. Colour some with matt black spray paint (try Cass Art), using masking tape to protect the screw end. You may opt to keep others as they are, especially if the glass is frosted.
- 2 Use PVA glue (try Hobbycraft) to stick on an assortment of sequins, glitter and beads (try John Lewis) over the bulbs. Allow to dry overnight.
- 3 Twist fine copper wire around the bases to create loops for hanging.

Colour scheme

Stick to a black, white and gold palette for a striking result



3 OF THE BEST metallic paints



↑ BURNISHED GLOW

Plastikote spray paint in brass, £7.39 per 400ml, Amazon



↑ ON-TREND METAL

Cosmic shimmer fabric paint in antique copper, £3.69 per 50ml, Craftasmic



↑ SPARKLING FINISH

Rust-Oleum glitter paint in silver, £4.99 per 125ml, Homebase

RETRO VIBE

Make a mini bar

Serve drinks in style by decanting mixers

- 1 Collect and clean different shaped glass bottles (or for assorted new designs, try Ikea) and fill with lemonades, spritzers, tonics and juices.
- 2 Write a label for each drink, using a gold pen on white card. Trim to size and make a hole in one corner. Tie to each bottle with festive ribbon.
- 3 Group bottles together so guests can serve themselves.





GoodHomes
Loves

★ Pretty place settings ★

*Impress your guests
with delicate details*

- 1 Begin by cutting sheets of tissue or wrapping paper to placemat size. Use a small sponge, or the rubber end of a pencil, to stamp on dots of gold paint.
- 2 Layer on plain white crockery and a napkin, then tie together gold cutlery (try House of Fraser) with a piece of copper-coloured wired ribbon (try John Lewis).
- 3 Create place name cards by cutting white paper into small strips and writing your guests' names on them in gold pen. Slip each inside glass vials with cork stoppers (try The Works), along with some gold glitter, then seal.
- 4 Finish by scattering over gold table confetti or sequins.



Create a display
Try adding tape in a
chevron design as well as
around the circumference

Tin-can lanterns

For a special finishing touch to your celebrations, these simple tealight holders look stunning displayed in groups

1 Remove the labels and wash six or more empty tin cans of different sizes. Spray the outsides in copper or gold paint (try Plastikote) in a well-ventilated area. Alternatively, brush with acrylic paint. Leave to dry.
2 Using different widths of nails, carefully hammer holes into the cans. Focus the openings near

the bottom of the cans where the candlelight will glow through.
3 Finish with metallic and glitter washi tape (try Papermash) and glue on sequins. Place tealights at the bottom of the cans and arrange on a heatproof surface. To hang, make holes either side of the top of a lantern and tie on thin copper wire.



FOR MORE IDEAS
See *Decorate for a Party* by Holly Becker and Leslie Shewring, £20, Jacqui Small



WIN A LEISURE RANGE COOKER

Give your kitchen a new-year update with this stylish model, worth £1,449



YOUR KITCHEN CENTREPIECE

The Leisure Cuisine CS100D510 range cooker, £1,449

Beat the January blues by taking your culinary skills to the next level with Leisure's stylish model – the Cuisine CS100D510.

Boasting a five-zone induction hob, three ovens, a traditional grill cavity and a slow-cooker function, the Cuisine gives you the confidence to create restaurant-style food in your own kitchen. There's also a handy programmable timer on the main oven for when you're preparing multiple dishes, so whether you're making the midweek family meal or hosting a dinner party, it makes it easier to cook up a feast.

There are many reasons why people are switching to cooking with induction – with

more heat intensity and faster cooking high on the list. The Cuisine's induction technology uses magnets to give the same power as a gas cooker, but with better energy efficiency, as it only heats up the pan rather than the cooking surface. With its stainless-steel finish and chrome handles, this Leisure range cooker also offers a striking design, guaranteed to complement any kitchen.

The ultimate in low maintenance, it also incorporates the latest easy-clean features, such as cook-clean catalytic liners, which are treated with a special coating to absorb grease and burn it off when the oven is used at high temperatures – giving you more time

to concentrate on honing your culinary skills rather than arduous cleaning.

Leisure leisurecooker.co.uk

HOW TO ENTER

For a chance of winning, visit goodhomemagazine.com

LEISURE

**Valid from 25 November 2016
to 2 January 2017**

Terms and conditions apply. For full details visit goodhomes-magazine.com/website-t-cs

❄️ ❄️ ❄️ *Winter homes* ❄️ ❄️ ❄️

Creating a FESTIVE REAL HOME

*Take your cue from these imaginative properties,
packed with inspiration and clever ideas for you to try*

'OUR CHRISTMAS IS FULL OF LAUGHTER'

Jo Rutt's extended
country cottage is the
perfect place for her
family to unwind



76



86

'EVERYONE JOINS US TO CELEBRATE'

Karen Moore's seaside bungalow



108

'THIS HOUSE IS SO COSY IN WINTER'

Heather Burton's rural self-build

Get the look



84

118

YULETIDE SCENE

The Rutt family's tree is just the right height for youngest son Harry to decorate it from top to bottom





FESTIVE UPDATE

Hang mini baskets filled with treats from the branches of your tree instead of the usual chocolate Christmas decorations



‘Our Christmas is full of laughter’

Jo Rutt’s gorgeous, extended Hertfordshire house is the perfect place for her family to unwind over the festive season

آموزشگاه انعکاس منبع جدیدترین اطلاعات، مقالات و دوره‌های آموزشی دکوراسیون داخلی

 Enekas.Academy

 Enekas.Academy





HOUSE DETAILS

HOMEOWNERS Jo Rutt, who owns homeware shop Nickel & Goose, and husband Simon, who runs a consultancy business and a bicycle sales company, Once Ridden
FAMILY William, 16, Harry, 12, and Cassie the Labrador
LOCATION Bushey, Hertfordshire
PROPERTY Four-bedroom extended mid-terrace cottage

QUICK BUDGET BREAKDOWN

Loft extension	
building work	£35,000
Bathrooms	£13,500
Furniture	£9,000
Carpentry	£4,500
Decorating	£9,500
Stripped floorboards	£900

TOTAL £72,400

PURCHASE PRICE

£340,000

OUTLAY TO DATE

£72,400

VALUED NOW AT

£570,000

آموزشگاه انعکاس منبع جدیدترین اطلاعات، مقالات و دوره‌های آموزشی دکوراسیون داخلی

Enekas.Academy

Enekas.Academy

← ACCENT HUE

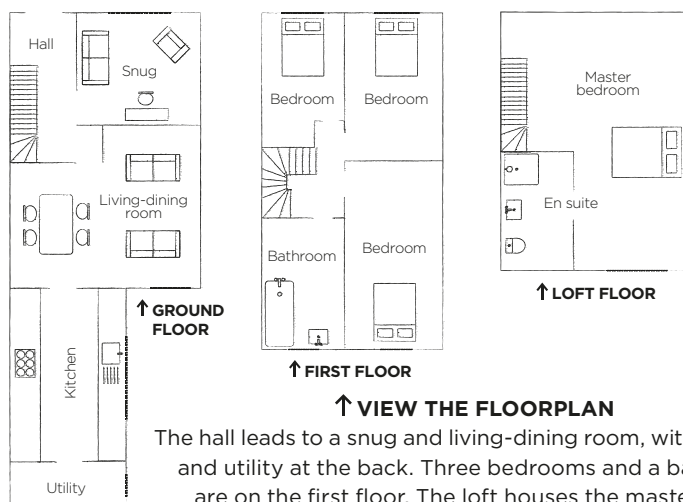
Neutral cream sofas are dotted with berry-red cushions from Habitat and Linum in patterns and textures that add to the festive feel

→ STUDY SPOT

An antique table and chair from Jo's interiors shop form a writing area in the snug. The canvas is by her sister-in-law, artist Philly Rutt

↘ WARM WELCOME

Cassie, the family's much-loved Labrador, takes a break at the foot of the stairs, ready to greet guests



'The house was in great condition, with many of its original features still intact'





↑ VINTAGE TOUCHES

To bring personality to the galley kitchen, Jo added characterful accessories, such as the post office sign and wooden shelves

← SOCIABLE SETTING

Open-plan to the living area, this informal space provides a place for the family to relax – and wrap last-minute presents

Having outgrown their London flat, Jo and Simon Rutt's move to their characterful new home in Bushey, Hertfordshire, began with some invaluable local knowledge. 'My sister had noticed that a pretty cottage had come up for sale on the next road to her,' Jo explains. 'She persuaded me to take a look. And as soon as I walked up the path, peered through the letterbox and saw the original cast-iron fireplace in the hall, I was sold.'

Pleasingly, the rest of the interior lived up to that positive first impression: 'It had previously been a rental property,' Jo explains, 'but it was still in good condition, with many of the original features intact.' Convinced it was the home for them, the Rutts put in a successful offer and sold their flat. 'We moved in when our youngest son, Harry, was six months old.'

Once settled, the top of Jo and Simon's to-do list was to replace the dated boiler in the dining room with a more efficient combi model, which they installed in the utility room next to the kitchen. The biggest improvement began five years ago, however, as they decided to extend the loft and ▶

IDEAS TO STEAL

Take a leaf out of Jo's book and try a pared-back Christmas scheme



↑ CHOOSE STACKABLE CHAIRS

Modern designs that can be stored away are ideal for unexpected guests



↑ GO GREEN

An easy seasonal option, eucalyptus will last up to two weeks in water



↑ ADD COLOUR AND TEXTURE

Make a guest room more cosy with pillows and throws in seasonal hues



update the family bathroom. Fortunately, for a major job such as this, the disruption and mess was minimal. 'The builders finished the job in six weeks,' says Jo. 'One of their greatest achievements was seamlessly matching the original balustrades on the new staircase that leads up to the loft space.'

The master bedroom is now a tranquil retreat with powder-blue walls and floor-to-ceiling cupboards, hidden from view behind the door. 'I didn't want to see rows of wardrobes,' Jo explains. 'I'm constantly moving furniture, objects and artwork around and I find it easier to live with neutral backgrounds and allow colour to come from accessories. For instance, the mahogany chest of drawers is a great focal point against the blue walls and white-painted wood.'

For the spacious family bathroom, Jo and Simon selected green tiles as a contrast to the traditional white and ceramic and chrome-finish fixtures and fittings, and installed practical black slate flooring.

Indeed, thanks to Jo's talent for finding retro homewares, antiques and upcycling furniture, the couple's cottage has interesting touches in every

corner, complemented by colourful abstracts by her sister-in-law, artist Philly Rutt. 'I have a passion for vintage and spend my weekends at flea markets and antique fairs to treasure-hunt for both my shop and the house,' Jo says. 'Many of my favourite finds are from local car-boot sales and house clearances.'

With the loft conversion now completed, the Rutts plan to turn their attention to the kitchen. 'I still see the house as evolving,' Jo admits, 'so it's very much a fantastic work in progress. We recently saw the amazing extended space in our neighbour's home, so now we want to do the same and open up the back of the property to enlarge the kitchen.'

This Christmas will be spent at Simon's father's home, affectionately known as Rutt HQ. 'We have a large extended family,' explains Jo, 'so this time of the year is always busy, with plenty of fun to be had. Simon's stepmother Sandy is an incredible cook and the days are filled with good food, champagne, games and plenty of festive cheer and laughter. And after all the celebrations, our lovely cottage is the perfect place to come back to and unwind.' GH

↑ HINTS OF FIR

The metal bed and vintage dresser are given a cheery Christmas nod with hanging bundles of pine and berries

FEATURE NATALIE FLAUM/REAL HOMES STYLING SIAN WILLIAMSON/
REAL HOMES PHOTOGRAPHS DARREN CHUNG/REAL HOMES



GET THE LOOK

Turn to the following page

→ ON THE TILES

Jo created an on-trend design for the revamped family bathroom, opting for a tub with a shower to maximize space



'I still see our home as evolving – it's a fantastic work in progress'



ONE SIMPLE CHANGE



MAKE A CHILD'S BEDROOM SPECIAL

If you have children staying for the holidays, fill their bedrooms with festive trinkets in the run-up to the big day. Also, why not buy a set of seasonal pyjamas for them to wear on Christmas Eve?

Good choice



The White Lighthouse's Parisian washed grey coat rack is shallow enough to fit a tight space

£29



Pop a Nordic stag cushion cover from Red Rainbow over an existing one for an easy update

£3.99



Live Laugh Love's suspended heart tealight holder emits a warm glow

£4

Luxury touch



£99

↑ Painted in French grey, this hat shelf from Cuckooland would be just as useful in a kitchen as it would a hallway



£7.50

↑ Sass & Belle's hanging heart tealight holder would work well outdoors, too



Leaping reindeers give this Scandi knitted cushion from Ideal Home Show Shop a touch of fun

£30

Price patrol

GET JO'S LOOK

Mix eclectic patterns with neutral pieces that have a subtle coastal vibe

STOCKISTS
Turn to
p172



→ This pretty bone china plate from Cream Cornwall Ltd at Notonthehighstreet.com is a twist on a classic



£27



← An heirloom purchase, Spode's blue Italian oval platter features a 18th-century countryside scene

£112

→ Walls and Floors' Hotel de Ville smooth crackle metro tiles in green have a vintage feel



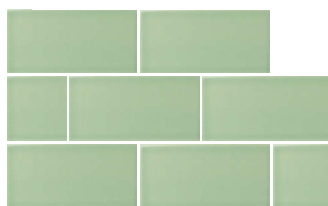
£494



Inspired by Fifties design, Very's Murcia sofa has a hardwood base with tapered, cylindrical feet

£32 PER SQM

← Create an uplifting look with the vibrant green of Fired Earth's Retro Metro crackle glaze tiles in lime



£74.98 PER SQM



Match the fabric of Ercol's Novara large sofa - shown in N204 - to your interior scheme

£1,635

FEATURE JOANNA THORNHILL



Homeowner
Karen Moore

'Everyone joins us to celebrate'

Spending Christmas with family and friends in her Norfolk seaside bungalow is a dream come true for Karen Moore





FESTIVE UPDATE

Ideal for a smaller space, a wall-hung tree made from branches connected by fairy lights is fun to decorate, without taking up any floor space

BRIGHT & BEAUTIFUL

The dining area is flooded with natural light streaming through large double doors that lead to the decked area





← PARTY TIME

Freshly decorated in Karen's favoured Nordic scheme, the table is ready for guests to arrive

→ CLEAN LINES

An ingenious and thrifty idea, cupboard doors are painted in matt grey and affixed to inexpensive carcasses from Ikea



HOUSE DETAILS

HOMEOWNERS

Karen Moore and husband Peter, who works in photography

FAMILY Charlie, 18, and Elsie the Labrador

LOCATION Burnham Market, north Norfolk

PROPERTY Three-bedroom Sixties bungalow

QUICK BUDGET BREAKDOWN

Building work & materials	£46,500
Kitchen	£1,500
Bathrooms	£1,000
Windows	£10,000
Decoration	£1,000

TOTAL £60,000

PURCHASE PRICE

£143,000

OUTLAY TO DATE

£60,000

VALUED NOW AT

£450,000



↓ SEASON'S GREETINGS

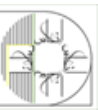
On the front door, a berry wreath highlights a frosted window pane bearing the name of the couple's bungalow



↑ GROUND FLOOR

← VIEW THE FLOORPLAN

The bungalow comprises a living room, kitchen-diner, three bedrooms and two bathrooms





When Karen Moore's husband Peter bought her a beach hut at Wells-next-the-Sea in Norfolk for their 20th wedding anniversary 15 years ago, she couldn't have imagined their next big purchase would be a weekend seaside property. 'We came for a holiday when our son Charlie was a baby and fell in love with the pine-fringed stretch of sand with the brightly coloured wooden huts,' she reminisces. 'I never dreamed I would be lucky enough to own one – let alone have a home here.'

After a year of renovating their hideaway at weekends while staying at guest houses and hotels, the couple decided to buy a place of their own to live in while visiting. The only property within their budget was in Burnham Market – 'an unattractive Sixties bungalow with boxy rooms and tiny windows,' Karen recalls. But after seeing a New England-style

makeover of a similar residence and realising the possibilities this house could hold, Karen and Peter took the plunge and made a successful offer.

The pair had plenty of ideas to make the most of their new coastal bolthole, soon to be christened Saltwater. The main priority was opening up the space by removing internal walls and maximising the light by installing huge floor-to-ceiling sliding glass doors in every room. Garish carpets from the time the bungalow was built were torn up and replaced with understated, pale laminate flooring. 'By unifying the colour of the floor and the walls we made the interiors appear much bigger,' Karen says, 'we then added light-coloured furnishings and plenty of mirrors, all within a very tight budget.'

The kitchen – 'a Formica horror' – was ripped out. Practical rather than precious about her welcoming holiday home, Karen designed a simple Shaker-style kitchen, using basic carcasses from Ikea with MDF doors made to measure by a local joiner. 'The space ▶

↑ SEASIDE CHIC

In the living room, a driftwood coffee table and artwork by a local photographer reference the house's coastal setting



IDEAS TO STEAL

Try Karen's innovative seasonal touches in your festive schemes



↑ KEEP PRESENTS TIDY

Organise gifts in fun printed sacks and keep your floor uncluttered



↑ ADORN A TABLE WITH FRUIT

Rosy pomegranates look beautiful in a traditional red-and-white setting



↑ CREATE A PORTABLE DISPLAY

A lightweight tray table can be moved around easily if necessary



↑ RUSTIC LOOK

This wood burner with two viewing panes provides a warming focal point in the living room

← MUTED MIX

Floating shelves are decorated with an array of white and silver accessories for an understated look







'We have so many friends to stay over Christmas'

has to be robust enough to withstand a constant barrage of children, dogs and visitors,' she explains, 'and painted cupboards can be touched up easily.'

All the appliances and fixtures came from sales: the Belfast sink, for example, was a discontinued line. Worktops were made to match the flooring and Karen chose a secondhand glass-topped table to keep the dining space bright. A large, cork-framed mirror is a focal point of the open-plan living-dining area, along with a seascape photograph on aluminium by artist Harry Cory Wright, who has a studio nearby. 'We fell in love with it, despite our budget,' says Karen.

The furniture in this room was also chosen to maximise the space for visitors. 'We have so many friends to stay that I chose two double sofas, with matching ottomans that provide extra seating and store toys and games for wet, windy days,' says Karen. The versatile Indonesian rail sleeper coffee table, from Emily Readett-Bayley, moonlights as a bench seat, complete with custom-made cushion.

Two double bedrooms and a bathroom can be accessed from the hallway, off the living room. ▶

↑ SUBTLE COLOURS

Textured white fabrics, natural materials and muted blue tones bring a restful vibe to this guest bedroom

← SOFT GLOW

A real Christmas tree by the front door and lots of twinkling tealights give guests a festive welcome

CREATE THIS SCHEME

Stylish decorating updates



↑ **BRIGHT IDEA**
Polzeath lantern fairy lights, £9.99, Light4fun

CLASSIC LINES
Hove stripe cotton in blue, £29.50 per m, Ian Mankin

↑ **WARM TONE**
Old oak matt oiled laminate flooring, £21.99, Quick-step



*'Our seaside retreat
is my favourite
place in the world'*

← LUXURY FEEL

Tall candlesticks in mercury glass, white and nickel add an elegant twist to the Moores' bathroom

→ SCANDI VIBE

Red accents in this predominantly white bedroom contribute an instant burst of festive energy

↓ FRESH AIR

The decked area is a popular place for gathering with a warming glass of mulled wine or cocoa

GET THE LOOK

Turn to the following page





A further Jack-and-Jill bathroom links the master suite with Charlie's bedroom. The couple made these additions by converting the adjoining garage.

'I love coming to Saltwater for the Christmas and New Year holidays,' says Karen, who decorates her home-from-home for the festive season in a Nordic-style palette of white with a dash of scarlet. A real tree fills the air with the scent of fresh pine and a roaring log burner adds to the cosy feel. A beautiful driftwood trinket tree lays flat against the wall and a third artificial, half-size tree, designed for small spaces, fits snugly into a corner of the living room. Stockings for Santa to fill hang from beds, wreaths decorate walls, presents are bagged up in jolly sacks and an abundance of flickering candles and tealights creates a warm, inviting atmosphere.

'We usually gather here with a big party of family and friends,' Karen says. 'About 20 of us – plus the dogs – meet at the beach hut first, drinking hot chocolate and mulled wine.' After an invigorating walk, they all retire to Saltwater, light the fire and put their feet up. 'At Christmas, it's usually bright but bracing, blue skies and white sands – our coastal retreat is my favourite place in the world.' **GH**

IDEAS TO STEAL

Nature-themed updates will enhance your festive schemes



↑ GIVE TWIGS A TWIST

Driftwood branches around a mirror are a good place to hang baubles



↑ COMBINE FAUX & REAL

Juxtapose white winter florals with a row of authentic-looking LED candles



↑ PUT PINES INTO POTS

Trim a few sprigs from your Christmas tree to make a chic bathroom display

STOCKISTS
Turn to
p172

FEATURE JACKY HOBBS PHOTOGRAPHS CLIVE NICHOLS

Good choice



← Add some glitz with Very's silver bauble wreath with LEDs

→ Tall and slim, Red Candy's wine glass in midnight red will bring colour to your table



← Provide extra surface space with the Aldsworth butler's tray table by Garden Trading



Luxury touch

→ Handmade from individual glass pieces, Nkuku's Chintu garland is a heirloom item



← With its chunky cut, Amara's Victoria & Albert high wine glass in red has a quality feel



→ Loaf's Tray Away console would work well in a hallway, covered in festive trinkets



Price patrol

GET KAREN'S LOOK

Classic red and gleaming silver make for a sophisticated scheme

STOCKISTS
Turn to
p172



Brighten up plain bed linen with the classic checks of the Carter housewife pillowcase by Bedeck



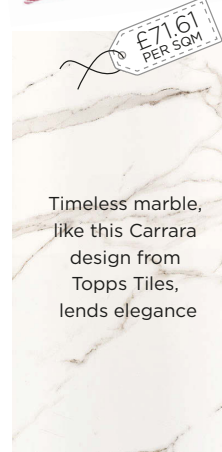
Sold individually, mix and match Lexington's Seaside pillowcase with other styles for an eclectic look



← B&Q's Eiger classic Christmas tree is brilliant if you're on a budget



Low-maintenance, The London Tile Co's Calacatta gloss bevelled porcelain tile looks realistic



Timeless marble, like this Carrara design from Topps Tiles, lends elegance

→ The Catrine tree from Dobbies is luxe enough to decorate minimally



FEATURE JOANNA THORNHILL

WIN A LUXURY BED

We're giving one lucky reader the chance to update their space with a gorgeous upholstered design, worth £695

COMFY & CHIC

The Retro Tube II double bed in silver-blue linen, £695



Combining traditional craftsmanship with modern design, online retailer Bedmonkey appreciates the importance of a good night's sleep. Specialising in innovative and bespoke British-made beds and mattresses, the Yorkshire-based company also sells from its impressive showroom, offering customers a chance to try before they buy with a 14-night, hassle-free return service.

Having spent more than 40 years designing and manufacturing quality beds and mattresses, Bedmonkey's stylish range offers nine designs in 12 luxurious fabrics. From the gentle curves and clean lines of the modern Retro Tube II that we're giving away, to the deep-buttoned headboard seen in the classic Chesterfield design, each and every product is handmade to perfection.

Customers can also create a bed tailored to their lifestyle with clever storage options and solid-wood finishes. In addition, the brand's luxurious pocket-sprung mattresses combine two new technologies, innovative Zero Gravity® foam and Outlast® temperature-regulating textiles, specifically created to provide unrivalled comfort.

Bedmonkey is proud to be a member of the National Bed Federation, and is fast becoming known as an honestly priced bed shop that puts customers' needs first.

Bedmonkey 01924 469993;
bedmonkey.com

HOW TO ENTER

To be in with a chance of winning a Retro Tube II double bed, visit goodhomemagazine.com



Valid 25 November 2016 to 2 January 2017

Terms and conditions apply. For full details, visit goodhomemagazine.com/website-t-conditions



SIMPLY STYLISH

Gentle curves and clean lines make the Retro Tube II a sophisticated choice





'I vary our festive colours every year'

Shani Zion's stylish Camden townhouse is the ideal backdrop for her enchanting schemes, providing a chic-yet-cosy family Christmas

آموزشگاه انعکاس منبع جدیدترین اطلاعات، مقالات و دوره‌های آموزشی دکوراسیون داخلی

 Enekas.Academy

 Enekas.Academy





FESTIVE UPDATE

Make your tree the focus with lots of sparkle and gifts piled round the base, then be minimal with decoration in the rest of the space

NATURAL TONES

Simple baubles, gift wrap and ribbons in golds and greens co-ordinate with the selection of cushions





HOUSE DETAILS

HOMEOWNERS

Interior stylist Shani Zion
and her husband Jake
Fitzjones, a photographer

AGES 49 and 53

FAMILY Marla, 19

LOCATION Camden, London

PROPERTY Victorian
terraced house, built in 1901

QUICK BUDGET BREAKDOWN

Kitchen	£10,000
Bathroom	£8,000
Shower room	£3,000
Loft extension	£20,000
Building costs	£30,000

TOTAL £71,000

PURCHASE PRICE

£450,000

OUTLAY TO DATE

£71,000

VALUED NOW AT

£1.1M

آموزشگاه انعکاس منبع جدیدترین اطلاعات، مقالات و دوره‌های آموزشی دکوراسیون داخلی

Enekas.Academy

Enekas.Academy

← SOCIAL SPACE

Sixties-style chairs give the living-dining area a retro feel, while an eclectic selection of framed pictures add personality

→ LINE UP

To maximise space, the radiator hangs vertically, enabling the sideboard to be positioned flush against the wall

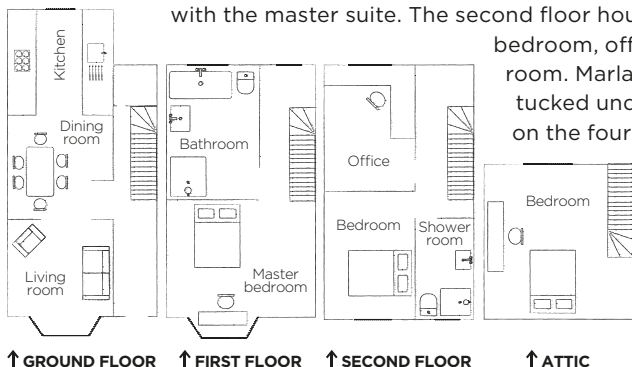
↘ INDIVIDUAL FLOURISHES

Shani accessorises her understated festive dining table with hand-wrapped gifts for her guests



↓ VIEW THE FLOORPLAN

The ground floor's living room leads on to the kitchen-diner. There's a large family bathroom on the first floor, together with the master suite. The second floor houses a guest bedroom, office and shower room. Marla's bedroom is tucked under the eaves on the fourth, attic floor



IDEAS TO STEAL

Adapt Shani's styling tricks to give your home some Yuletide magic



↑ ADORN CHANDELIERS

Hang baubles from light fittings for a simple-yet-effective update



↑ ADD LUXE MATERIALS

Use silk ribbon and scarves when wrapping presents for added impact



↑ ILLUMINATE A BANISTER

Incorporate battery-powered fairy lights into your hallway decorations





← TIDY & TIMELESS

Designed by a friend, the kitchen cabinetry is matched by shelves that store all-white and glass crockery

↪ VINTAGE VIBE

Shani collects old advertising postcards wherever she travels, which she then adds to this distinctive hallway display

For interiors stylist Shani Zion, renovating her own family home can feel like a busman's holiday. 'I see so many design influences in my job, and I can appreciate them all,' she explains, 'so when it comes to our house, I frequently find it hard to stick to one idea.' Fortunately, the decorating process is also a labour of love and, over the years, Shani has been able to distil her favourite elements into her own distinct look. 'I've developed this eclectic, vintage-meets-modern aesthetic. It's about comfort and happiness and great family memories,' she says.

The house in question is a beautiful, light-filled Victorian property on one of Camden's more tranquil streets. Purchased soon after their daughter Marla, now 19, took her first steps, it was Shani and husband Jake's first family home. 'We were smitten with the area, so when this place came up for sale we just bought it, as fast as possible,' she recalls.

Although it had already been converted back into a single dwelling after decades of being rented out as flats, the renovations were not of a high standard. 'Nothing seemed built to last,' Shani recalls. 'The flooring was horrid, the kitchen flimsy

and it only had one poky bathroom. There were too many doors and little character. But the bedrooms were a good size, the interior was bright, and it had a tiny little patio out back that was full of potential.'

Taking it slow and steady, the couple renovated the four-storey property over a number of years. Tackling the downstairs first, they removed doors and widened entrances on the ground floor to create an open-plan, sociable living space and installed a new designer kitchen. Next, Shani sacrificed one of the guest bedrooms to create a new large family bathroom – and the gamble paid off, as it's now her favourite room in the house. More recently, they converted the attic space into a retreat for Marla and updated what used to be the home's only bathroom into a shower room for her use.

Increasing the sense of flow between the living areas has had a lasting effect on how the family live, especially at this time of year. 'Our home is ideal for entertaining and cooking all together, especially over the festive season,' says Shani. 'The long bench seat and big table in the dining zone means we can easily accommodate 10 to 12 people for Christmas dinner.'

The galley-style kitchen, which leads from the dining space, was created by long-term friend and ▶



'I don't think interiors need to cost that much'

kitchen designer Oliver Peake. 'It's 10 years old now,' says Shani, 'but everything he did is still perfect – and hasn't dated. It works like a dream.' Although she admits open shelving isn't practical if you don't like cleaning, Shani's happy to get the duster out in order to display her beautiful white crockery, which she collected from car-boot sales, markets and antique shops. 'Everything is within arm's reach, which speeds up cooking,' she adds.

Shani has always had a frugal approach to decorating and was busy upcycling furniture and fittings long before it was made fashionable by the Kirstie Allsopp effect. 'I don't think interiors need to cost that much,' she says. 'Everything expensive or designer can be sourced affordably. Quite a few of our pieces have been salvaged from skips or rescued from collection by the bin men.'

Ikea also features in every room. 'I don't really believe in spending money for its own sake,' Shani adds. 'By adding personal touches to off-the-shelf furniture – perhaps changing the knobs or handles

on a cabinet or repainting a table, for example – you can give it far more character and personality.'

Another key trick in Shani's repertoire is to think plain and simple when it comes to major pieces, such as sofas and dining furniture. This approach comes into its own during the Christmas period: 'I love to change the colour and style of our festive decorations every year,' she explains, 'and because the walls and main furnishings are mostly whites and creams, I can vary the look very easily.'

This time, Shani has gone for mossy greens and golds to match her recently purchased cushions, but she's tried nearly every combination of hues over the years. 'When buying baubles I go for quantity over quality so I can add lots of colour without blowing the budget for Christmas presents,' she laughs.

Nearly two decades on, Shani is still enchanted by the home she has created. 'On Christmas Day, I light the fire in the living room to make it cosy, invite the family around, and count my blessings that we live in such a lovely, happy house.' GH

↑ BRIGHT & AIRY

Located at the front of the property, the master bedroom is flooded with sunshine in the mornings

↗ COLOUR CONTRAST

This statement wall was created using Dulux's rich bowler hat matt emulsion

→ CALM SPACE

The couple sacrificed a guest bedroom in order to create a large family bathroom

GET THE LOOK

Turn to the following page



ONE SIMPLE CHANGE

REPURPOSE A VINTAGE LADDER

Stylish and practical, an old-fashioned wooden design with well-spaced rungs is perfect for keeping towels at arm's reach after a bath or shower. Search for one at your local reclamation yard and sand it down well before staining in a dark colour to contrast with muted grey walls. Alternatively, for a modern version, try Sweetpea & Willow.



Good choice

↓ Berry Red's velvet cushion in Ceylon yellow provides a vivid pop of colour



£19

↑ Dotcomgiftshop's large Villandry mirror has an authentic antique look



→ At this price, you can afford to splash out on luxury taps to go with the Beta wash bowl from Bathstore



£22

Luxury touch

↓ Enjoy the feel of velvet with William Yeoward's Paddy cushion in citrine lime from Amara



↑ Simple and chic, the French hanging mirror from Cox & Cox is suitably retro



£69



£290

← Sloping curves give Utopia Bathrooms' Miro sit-on basin a streamlined aesthetic

Price patrol

GET SHANI'S LOOK

Fresh whites and mossy greens with vintage touches create a stylish space

STOCKISTS
Turn to
p172



→ Fine details on Wyevale's bauble make it a delicate decorating option



£3.50

Just a hint of French styling helps soften Very's Arabelle dressing table set



£199



↑ House Doctor's bamboo design from Smallable can hold lots of towels

£35.10



↑ Oka's towel ladder could also be used to hang accessories from

£99

← Add sparkle with The Contemporary Home's frosted green bauble



£4

The ornate Elegance set from Newtons Furniture is full of charm



£829

FEATURE JOANNA THORNHILL



FEATURE FIR

The large Christmas tree was bought from a local farm. Heather adorns it with an eclectic mix of baubles



'This house is so cosy in winter'

Heather Burton is delighted with the warm, seasonal look she's given her Georgian-style home in York





HOUSE DETAILS

HOMEOWNERS

Heather Burton, a writer and artist, and her husband David, a photographer

FAMILY Grown-up daughters, Hannah and Kate

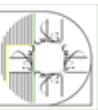
LOCATION York

PROPERTY Four-bedroom, detached house, built in 1998

QUICK BUDGET BREAKDOWN

Kitchen extension	£60,000
Utility	£2,000
Bathrooms	£8,000
Wood-burning fire	£2,500
Joinery	£5,000
Flooring	£3,000
Furniture	£7,000
Decorating	£3,000

TOTAL £90,500





← BRIGHT SPACE

Light flows into the living room through double doors into the hall. The table in the corner was given by a neighbour who was going to throw it out

↓ QUIET NOOK

Black-and-white family photographs and artwork by Heather's mum are framed and grouped together over a bench seat in the hallway



PURCHASE PRICE

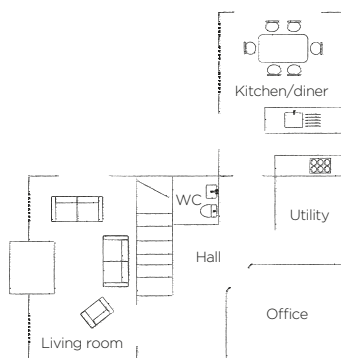
£130,000

OUTLAY TO DATE

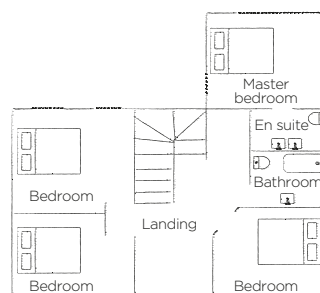
£90,500

VALUED NOW AT

£475,000



↑ GROUND FLOOR



↑ FIRST FLOOR

↑ VIEW THE FLOORPLAN

The living room, office and utility lead off the ground-floor hall, with the kitchen-diner at the back. Upstairs, there are four bedrooms – one en suite – and a bathroom

'You have to live in a house a while before you recognise its strengths'



When Heather and Dave Burton built their house it included everything they thought they could possibly want: a rural location, room

for a growing family and lots of light and space. But they soon realised the property would have to evolve along with them. 'No matter how much time you spend on planning the design and build, there is always room for improvement,' says Heather. 'You have to live in it for a while before you begin to appreciate both its strengths and weaknesses.'

When the house was constructed in 1998 the kitchen was half its current size and had a large island and breakfast bar in the middle of it. There was a small office on the ground floor and a long, narrow utility, along with a dining room and separate living area. 'It suited us well at first but I was working from home and as the business grew we needed a bigger office,' says Heather. 'Dave and I decided to move it into the dining room, which was only used on special occasions, and put the table in the kitchen. It was a bit of a squash, but it ▶



IDEAS TO STEAL

Look to Heather's home for simple seasonal touches



↑ CREATE CITRUS BAUBLES

Cut slices into oranges and dry them out in the oven on a very low heat



↑ UPGRADE YOUR NAPKINS

Patterned linen can be used year after year for a sense of occasion



↑ CUSTOMISE SANTA SACKS

Decorate inexpensive hessian bags with felt shapes and use to store gifts



↑ AMPLE STORAGE

For an unfitted look, the Burtons designed bespoke cupboards and added units from Kutchenhaus

↖ OPEN PLAN

The kitchen was extended to create more space. Roof lights and bi-fold doors on to the garden add to the roomy, relaxed feel

← ARTISTIC IDEA

Heather made the 3D city scene to fit the wall space. She bought the table, chair and crate from fairs and charity shops

IDEAS TO STEAL

Discover new ways to refresh your interiors for the season



↑ HANG A HALLWAY MIRROR

Check your appearance quickly and easily before heading out to parties



↑ MAXIMISE STORAGE SPACE

Even a small area can be utilised with the help of a corner cabinet



STOCKISTS
Turn to
p172

↑ MAKE FIREWOOD A FEATURE

Showcase the beauty of cut timber by stacking logs either side of a stove



↑ ROSY GLOW

Daughter Hannah chose a soft pink and white scheme for her bedroom and left the floorboards uncovered to add texture and contrast

served its purpose,' says Heather. 'Then we had to work out what to do with the old office.' It was a tiny space and had many uses – as a guest bedroom, a hobby studio, a laundry and as storage – until the couple decided to knock down a wall to create a much larger utility. 'We wondered why we hadn't thought of it sooner,' remembers Heather. 'It was much better use of the space and really opened up the ground floor. We then realised that we could do something similar with the kitchen.'

So the Burtons asked a friend, a local builder and joiner, to build a single-storey extension that almost doubled the size of the room, creating an open-plan living area with bi-fold doors opening on to the garden. 'It completely transformed the house and gave us a large, light family kitchen where we now spend most of our time,' says Heather. 'It's made a huge difference to the look and feel of the space. Now it's more like a garden room with lots of light pouring in during the day, whatever the weather.'



In recent years Heather and Dave have also had the family bathroom refitted, bespoke cupboards built in the main rooms and a wood-burning fire installed in the living area. They've had new carpets upstairs, redecorated several times and gradually updated furniture to create a light, spacious and contemporary feel. Earlier this year, the couple also modernised their en suite with Scandi-look wood panelling.

'We don't have a particular style, but the house has changed dramatically as we've grown into it,' says Heather. 'It's hardly recognisable from what we first built. We used to have lots of pine cupboards, terracotta floor tiles, assorted bright colours and a mish-mash of furniture. Now it's decorated in layers of neutral tones with lots of natural textiles, unusual accessories, pictures and mirrors.'

'We have a lot of things which have been passed down the family, too' explains Heather. 'We like a combination of antiques and family mementos that hold their own stories, and modern things ▶



↑ **DARK PANELS**

Dave designed the bathroom to include feature wall tiles on the cupboard doors and behind the mirror of the basin unit

← **CALM ZONE**

Heather's artwork fills the walls of the single guest bedroom, which is furnished in a timeless style



*'I love simple things,
natural textures
and elegant shapes'*



that keep the house up to date. I'm a bit of a collector – I love simple things with some history, natural textures and elegant shapes. Every so often I have a clear-out just to keep the schemes evolving. It doesn't take much to change the look of a space.'

Christmas gives Heather the perfect excuse for such an update: with a tree from a local farm in the living room and another in the kitchen, she decorates the ground floor with laurel, ivy and holly picked from their garden, adding baubles collected over the years and seasonal touches at the dining table. 'We like the house to be lived in,' says Heather.

'The more friends and family who come round over Christmas, the better. But it's also a very peaceful, cosy place when it's just the two of us. Now the girls have moved away, we've converted one of the bedrooms into an art studio, so the house never really stands still.'

Although their love of this ever-evolving home is clear, Heather and Dave say they would build again if the opportunity arose. 'It's exciting to design your own home,' says Heather. 'We've learned a lot from this property and there are lots of design ideas we would include again – but no matter what we built, we would still expect it to change with the times.' **GH**

↑ **SOFT SPOT**

Heather and Dave wanted their super-king bed to work with the dimensions of the large room

→ **RUSTIC TWIST**

The en suite was recently transformed with painted tongue-and-groove panelling





CREATE THIS SCHEME

Stylish decorating updates

CLARET COLOUR
Werna curtains in
dark-red fabric,
£35, Ikea

MUTED TONE
Matt emulsion
in biscuit barrel,
£30.99 per
2.5ltr, Crown

PANEL EFFECT
Graham & Brown Sahara
natural wallpaper, £14.99 per
10m roll, Victoriaplum.com

GET THE LOOK
Turn to the
following page

FEATURE HEATHER DIXON PHOTOGRAPHER DAVE BURTON



Good choice



FROM
£39.99



£146.99

Home Essence's
gilt oval leaf
mirror from
Wayfair evokes
the glamour
of yesteryear

↑ Introduce a
splash of seasonal
green with the
Indulgence
shaggy rug
from Dunelm



Wickes' durable matt
emulsion in Earl Grey is a
chic alternative to cream

£19.99
PER 2.5LTR

Luxury touch



£295

A swirl detail in
The Chandelier
& Mirror
Company's
Bretby gives it
a modern twist



FROM
£99.99



The grey undertones of
Fired Earth's matt emulsion
in dowager still feel warm

£39.50
PER 2.5LTR

↑ With a deep,
thick pile,
The Rug Seller's
Amazon in green
feels wonderfully
soft underfoot

Price patrol

GET HEATHER'S LOOK

Contrast earthy tones and natural materials with flashes of festive gold



↙ Go faux with Walls and Floors' Argent Abrade wood-effect ceramic tile planks



£13.95
PER SQM



£19.99

↑ Bean Bag
Bazaar's Icon
rhombi knit throw
in grey adds a
Nordic touch

£575

For a leather
chair, Barker &
Stonehouse's
Galveston is a
brilliant bargain



STOCKISTS
Turn to
p172

→ Courchevel silver grey wood-effect ceramic planks from The Baked Tile Company look chic



£86

↑ Warm
and cosy,
the Klippan
Man & Wife
design by
AtNo67 is
100 per cent
lambswool

£1,025

Sofa Workshop's
Whipper Snapper
armchair will only
improve with age



FEATURE JOANNA THORNHILL

Updating your KITCHEN & BATHROOM

*Inspiring projects full of sleek solutions and
bright ideas to transform your busiest rooms*

'THE BLUE TUB IS A FUN TWIST'

Becky Cawthorne-Smith has devised a sophisticated-yet-playful retreat



142

128



'WE LOVE TO ENTERTAIN'

A sociable space for family and friends was Abigail Lynn's aim



146

'OUR EN SUITE IS HI-TECH'

Karen Hibbert has created the ultimate modern bathroom

Buy the best



138

151



STYLING TIP

Whether it's with furniture, accessories or worktops, wood tones are a great way to help add warmth and texture to more modern, neutral kitchens



BEFORE

KITCHEN DETAILS

HOMEOWNERS

Janet Wattison and her husband, Peter, who run their own business

LOCATION Mold, North Wales

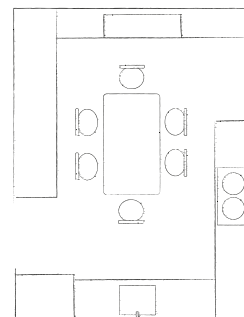
PROPERTY Traditional stone farmhouse, built in the 19th century

COST OF NEW KITCHEN

Cabinetry & overmantel	£14,800
Worktops	£3,700
Appliances	£9,015
Sink & taps	£550
Tiles	£800
Lighting	£390
Bespoke bench	£285

TOTAL £29,540

SIZE OF ROOM
W5xL7.5m



KITCHEN MAKEOVER 1

‘I KNEW THIS WAS THE RIGHT DESIGN’

Janet Wattison took her time deciding how to give her classic farmhouse scheme a fresh and airy new look



WORK CARRIED OUT

The layout was reworked and the tired country kitchen replaced with a modern interpretation that still retains its sociable feel



↑ PERIOD STYLE

To preserve the space's traditional character, an overmantel was constructed around the range cooker

← HIDDEN ASSETS

Stylish larder units house a generous pull-out food store and fridge freezer

IDEAS TO STEAL

Try out Janet's clever, practical finishing touches in your own home



↑ INCORPORATE STORAGE

Decorative details such as overmantel columns can double up as cupboards



↑ TAKE A PEW

Build a bench-style window seat to match your dining table and chairs



↑ KEEP YOUR GREENS HANDY

Store wicker drawers for vegetables by the sink for easy preparation



While Janet and Peter Wattison had lovingly renovated the majority of their period farmhouse and even extended into an adjoining barn, how to transform their kitchen proved elusive. 'It was the hub of our home,' Janet says. 'Although the old country pine units and exposed brickwork were dark and dated, it was still the place where family and friends would gather, drawn by the warmth of the traditional range cooker and large, sociable table.' Understandably, the couple were concerned that a potential update might not recapture that cosy, welcoming feel that made the space so important.

It was only when a replacement range cooker was required that the Wattisons were finally prompted into decisive action: 'The range supplies all of our hot water and heating,' Janet explains, 'so a new installation was always going to be a fairly major operation. This presented us with the perfect opportunity to carry out any other work.'

Structurally, the room and layout were to remain more or less the same, although the couple did opt to remove a heavy brick surround and block up a redundant doorway in order to free-up space for extra units. However, Janet's new kitchen nearly didn't materialise – having set her heart on a modern interpretation of the existing scheme, she simply could not find anything that fitted the bill. 'I had

↑ STARTING POINT

Replacing the old range with a smart new black one spurred the rest of the renovation work

LOOK FOR LUXE

Inject instant character



↑ RETRO VIBE

Wooden crates, Vincent & Barn



GOOD IDEA

Extend a black worktop a short way up the wall as an upstand to create a bold band of colour

almost given up hope,' she confesses, 'when Peter spotted the De Novo showroom in Chester while driving home one evening. Soon after, we both paid it a visit and when I saw Burbidge's painted oak Shaker-style units, I knew I'd found my new kitchen.'

Janet was even more delighted to discover that the De Novo team was more than happy to work around her beloved table and chairs – which had originally been salvaged from the farmhouse's old dairy – and seemed undeterred by her request for incorporating a large flatscreen TV into the space. 'They also persuaded us to cover the beams to allow for better lighting,' she recalls, 'and when a waste pipe proved problematic they decided to simply step the larder units forward, making them a deliberate design element within the kitchen.'

The couple opted for pale units and walls to keep things bright and airy, teaming them with practical large-format porcelain floor tiles. Characterful details, such as the tongue-and-groove panelling, woven baskets and a striking overmantel, added the injection of country-cottage warmth Janet was longing for.

Fitting integrated appliances also ensured the overall look remained simple and uncluttered. 'De Novo's idea of installing a discreet induction hob, which allows the range to be turned off when

required, was inspired,' continues Janet. However, her favourite feature is the new built-in bench, designed to replicate a seat originally positioned under the window. 'It really helps create the feel of a modern farmhouse kitchen and the shelves underneath are just perfect for my collected kitchenalia,' she says.

Janet is delighted with every aspect of her new design. 'I love the contrast of clean, contemporary cream units and matt-black worktops against all the traditional, tactile timber and wicker,' she says. 'The room still feels familiar as my old table and chairs remains at its heart. I'm happy to report that family and friends continue to relax and gather in here.'

↑ RUSTIC CHIC

Tongue-and-groove panelling and an open wine rack help soften more modern components, such as the wall-mounted flatscreen TV

STOCKISTS
Turn to
p172

Shopping list

CABINETRY Lansdowne painted oak kitchen, £750 for a base unit (600mm), Burbidge at De Novo Kitchens. Custom oak window seat, £285, DN Kitchen
Fitting **WORKTOPS** Silestone Sensa Abyss Leather natural granite with upstand, approx £400 per sqm supplied and fitted, The Merchant House
APPLIANCES Brandon range cooker, from £7,100, Stanley. Bosch dishwasher, £355; Neff microwave, £290; Neff fridge-freezer, £560; ceramic domino hob, £380; Britannia Visso extractor, £330, all De Novo Kitchens **SINK & TAP** Franke Belfast sink, £370; Abode Taura monobloc tap, £180, both De Novo Kitchens
FLOOR TILES Large format porcelain, from £40 per sqm, Rossett Tiles **PAINT** Willow tree matt emulsion, £19.99 per 2.5ltr, Dulux **LIGHTING** Under-unit LED strip lighting and LED interior cabinet down-lighters, £390, De Novo Kitchens





KITCHEN DETAILS

HOMEOWNERS

Abigail Lynn and her husband Christopher, a director

AGE 38 and 40

FAMILY Joshua, 6, and Jacob, 4

LOCATION South Croydon

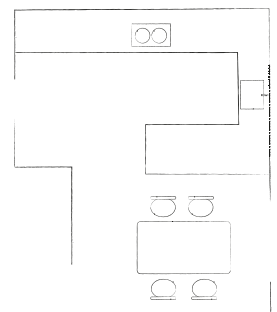
PROPERTY Four-bedroom, detached Fifties build

COST OF NEW KITCHEN

Kitchen cabinetry	£8,000
Worktops	£4,000
Appliances	£3,372
Sink & tap	£350
Tiles	£900
Radiator	£350

TOTAL £16,972

SIZE OF ROOM
W5xL7.5m



KITCHEN MAKEOVER 2

‘WE LOVE TO ENTERTAIN’

Creating a sociable space to cater for friends as well as family was Abigail Lynn’s aim

EXPERT TIP

On-trend grey grout looks great with metro wall tiles – to help pull the scheme together, lay floor tiles in a similar brick formation and use the same dark hue between them

WORK CARRIED OUT

The existing kitchen has been combined with the former garage. New contemporary units, flooring, windows and doors have been installed

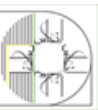


↖ DUAL PURPOSE

Instead of an island, this peninsula bar allows Abigail to separate the kitchen from the dining zone

← MIXED MATERIALS

Black appliances, bar stools and radiators, together with copper pendants, lend a subtle industrial feel





House-hunting can be a tricky business, but for Abigail Lynn the process was made all the more difficult by having her heart set on an exceptionally specific location.

'I wanted to raise our boys close to my childhood home in south Croydon,' Abigail explains. 'It's not only extremely quiet and residential, but it also has direct links to central London. However, the area I love comprises just a handful of roads, and properties come on the market once every blue moon.'

So when a detached, four-bedroom fixer-upper with a spacious garden went up for sale in 2015, Abigail was quick to act – particularly as it was only five doors down from her old house, and her mum lived around the corner. 'We viewed that weekend, had our offer accepted the same day and then put our home on the market that week,' she recalls.

With the keys in their hands, Abigail and her husband Christopher hit the ground running. Just three months after moving in, they had installed new electrics and heating; carpeted, plastered and painted three of the bedrooms; and landscaped both the front and back gardens. Keen to take the transformation to the next level, an architect was commissioned to draw up plans for the downstairs.

'The old kitchen was dark with a small, ineffectual window, and the past-its-best cabinetry was ill-fitting,' Abigail recalls. 'Knocking through into the garage ▶

↑ CURVE APPEAL

Rounded units help encourage a gentle flow between the kitchen and diner

LOOK FOR LUXE

Add a statement copper shade



↑ HIGH SHINE

Där Lighting
Yoko pendant,
Love Lights

IDEAS TO STEAL

Make the most of your scheme with some of Abigail's space-saving tips



↑ OPT FOR A SEAMLESS LOOK

Extend your worktop by cladding the windowsill in the same material



↑ BE CREATIVE WITH SHELVEING

Hang a ladder horizontally to create a place to display trinkets and pictures



↑ CHOOSE SLIMLINE APPLIANCES

Install a compact wine fridge at the end of a peninsula or island unit

'I wanted a look that was unusual as well as classic'



was the obvious solution. Also, we'd befriended the neighbours who had gone for a similar conversion, so I knew exactly what kind of space it would create.'

The renovations began in May 2016 and the demolition stage moved rapidly. 'We repositioned doors and windows to maximise the light and views over local woods,' Abigail says. The kitchen was designed to boost storage and have a modern look – but with a twist: 'I wanted something unusual, yet classic enough to stand the test of time, and I kept coming back to Shaker-style cabinets in grey.'

Fortuitously, the couple found what they were looking for in a half-price sale at Wickes. 'It was

perfect as I wanted solid carcasses,' says Abigail. 'My old kitchen had thin, cardboard backing that you could push out at the back if you were too rough.'

Now that the Lynn family has had time to enjoy their bright new space, Abigail knows she made the right decisions. 'I wanted a really family-friendly environment with a defined kitchen and dining area,' she explains, 'and the peninsula bar works brilliantly. I can watch the kids at the table as I cook, and it's a great social area for the adults, too.' So much so, in fact, that Abigail and Christopher haven't had a free weekend since the renovations were completed: 'We've been entertaining constantly,' she beams.

↑ BRIGHT IDEA

A large window and double doors bring ample light into the redesigned space

↙ ECLECTIC TASTE

Retro-style chairs in tonal shades of blue provide the room with interest and colour



Shopping list

UNITS Tiverton Slate units, £8,000, Wickes **WORKTOP** Sheridan Apollo Slab Tech in marmo bianco, £4,000, Wickes **APPLIANCES** Rangemaster professional deluxe 90cm with induction hob, £2,004; Rangemaster 90cm chimneyhood, £389, both John Lewis. Daewoo American fridge-freezer, £699; small 30cm wine fridge, £280, both Currys **SINK & TAP** Sheridan Apollo Slab Tech cut-out undermount sink, £150, Wickes. Franke Wave pull-out tap, £200, Screwfix **TILES** Extreme white high-gloss porcelain floor tiles, £30 per sqm; metro wall tiles, £10 per sqm, both Tile Mountain **RADIATOR** From the Acova range, £350, Screwfix **LIGHTS** Copper pendant lights, £38 each, Horsfall & Wright **FURNITURE** Eames-style chairs, £59 each; dining table, £220, all Cult Furniture. Bar stools, £30 each; Junior Urban chair, £30, both Ikea. Vintage ladder, £10, Four Elms Nursery. Wire wall shelf, £55, Primrose & Plum

STOCKISTS
Turn to
p172

WIN A MODERN WOOD BURNER

One reader has the chance to cosy-up with a Contura stove, worth over £2,000

There's nothing like a crackling real fire to inject a warm and snug feeling into your interior spaces. Contura's range of efficient, modern, wood-burning stoves are built to the highest quality standards; these design-led products also generate an average of 60 per cent more heat than a traditional open fire.

Clad in a smart white finish, the new Contura 556G:2 features a wide-screen glass door and top, with generous windows on three sides, and complements both classic and contemporary homes. Inspired by on-trend Scandi interior design, the 556G:2 would create a striking focal point in any room. This model features a rotary grate and sliding ash pan for easy cleaning and maintenance, and the cool-touch handles ensure adding logs is safe and simple. And thanks to its flat-back panel, each stove can be installed comfortably along a wall or sit equally neatly in a corner.

In addition, the majority of Contura's stoves are DEFRA Clean Air Act exempt, meaning that they can be installed in Smoke Control Areas. To view the Swedish brand's complete collection, take a look at its easy-to-navigate website.

Contura contura.eu



↑ WARM GLOW

Watch the flames through the 556G:2's three glass windows

→ TWO TONE

This model has a glossy black top and white finish



SIMPLY STUNNING

The Contura 556G:2 makes a striking focal point in both modern and traditional living schemes, £2,120

HOW TO ENTER

To be in with a chance of winning this prize, visit goodhomemagazine.com

Contura

Valid from 25 November 2016 to 2 January 2017

Terms and conditions apply. For full details, visit goodhomes-magazine.com/website-t-cs



Pick the best TUMBLE DRYER

How to choose a modern design to suit your lifestyle

Especially useful during the winter months, the latest tumble dryers are also ultra energy-efficient – and therefore less expensive to run. Useful innovations include sensor drying, which measures the humidity in the laundry and stops the drying process once it reaches the selected level, as well as eco and speed-drying programmes, and heat pump technology, which uses lower temperatures. Contemporary designs also offer a variety of cycles to suit different fabrics, with settings for duvets, denim and delicates, as well as a delay start function.

Capacity is another important factor to consider: go for the largest your budget allows, as this will dry clothes faster with less creasing. Gadget lovers may be best served by a connected machine that can be controlled from a smartphone or tablet.

Finally, think about whether you want a condenser model that can be installed virtually anywhere, or a vented design. The latter is less expensive than the former, but needs to be installed by an external wall with a dedicated vent to expel damp air.

NEXT BIG THING

DOUBLE DUTY

The new Haier Duo Dry can simultaneously wash varying colours and fabrics, plus, the larger drum can be switched to drying mode so you can launder and dry at the same time.

• H128xW60xD60cm

£1,699

Under £400



£249

↑ LARGE CAPACITY

Candy's GVCD101WB condenser has an 10kg drum – ideal for big families.

Features include four sensor programmes, delay start and filter care.

• H85xW59.5xD61cm

→ KIND TO CLOTHES

Sleek and chic, Hotpoint's Futura SUTCD97B6KM offers sensor drying, as well as a Soft Motion motor to help protect fabrics.

• H85xW59.5xD61cm



£169.99

£339.99

← VERSATILE MODEL

Prevent creases with the White Knight C44A7W vented tumble dryer from Currys, which has a reverse tumble action. The door can be switched to either side, so it can fit into most spaces.

• H85xW60xD53cm

EXPERT TIP

Don't install a dryer with heat pump technology in a cold garage or outbuilding – these models need to operate at an ambient temperature



EXTRA
FEATURES



TIME SAVER

Zanussi's ZDC8203WR condenser dryer can handle up to 8kg of laundry. With an oversized door, it's simple to load and has a delay start setting, while its easy iron mode is great if you're in a rush.

• H85xW60xD60cm

NEED TO KNOW

■ **CONDENSER** dryers separate water from moist air into a container. This allows the appliance to be installed in any well-ventilated room. Most models will alert you when the container is full, while the latest designs can pump the water out via your own plumbing system.

■ **VENTED** models take damp air and discharge it using a plastic hose. For this, a permanent vent in an outside wall is required. Alternatively, the pipe can be hung out of a window.

■ **HEAT PUMP TECHNOLOGY** is now found in most condenser dryers. It recirculates warm air, resulting in a more efficient design with an A energy rating. Check this grading before buying: A+++ is the highest, most efficient; G is the lowest.

■ **DRUM SIZES** vary from 6kg to 10kg. As a rule of thumb, 1kg will dry an outfit or five T-shirts. Ideally, it should equal the capacity of your washing machine, as the larger the drum, the more efficient it is.

£400-£600



← GENTLE TOUCH

Silk and handwash-only woollens can be dried in the Electrolux EDH3887GDE Delicatecare dryer. Additional features include a handy Optisense system, which ensures clothes don't get too dry.

• H85xW60xD60cm

→ GREEN MACHINE

Save on small loads thanks to the Ecotime IDPE 845 A1 ECO heat pump dryer from Indesit and its energy saver sensor. It also features new Thermo Air technology for minimum power consumption.

• H85xW59.5xD61cm



← GREAT GUARANTEE

For peace of mind, the John Lewis own-brand JLTDH21 heat pump model comes with a three-year warranty. There's a range of special programmes, including bed linen, easy iron plus, and activewear.

• H85xW60xD63.7cm



FEATURE PACKED

Boasting an impressive 27 programmes, the D9665E heat pump condenser dryer by Gorenje dries more gently than conventional models thanks to clever Twinair technology. It even has an ionizer to tackle allergens.

• H85xW60x D60cm

£549



£600-£850

→ **WI-FI OPERATED**

Equipped with Home Connect, the Serie 8 WTWH7560GB condenser dryer from Bosch can be controlled remotely via a smartphone or tablet.

- H84xW60xD60cm



← **SMART SYSTEM**

Samsung's DV90H8000HW heat pump dryer with extra-large door is rated A+++. Easy-to-use features include a filter-clean alarm, anti-crease function and swirl drum.

- H85xW60xD64.5cm



↑ **DESIGNER LOOK**

An alternative to all-white, LG's RC8055EH2M condenser model comes in steely silver. It can operate in an eco mode as well as a speed setting, and there's antibacterial protection in the water tank, too.

- H85xW60xD64cm

NEXT MONTH
Healthy appliances



↑ **GET CONNECTED**

Featuring 6th Sense live connected technology, which allows for remote control of your appliance, Whirlpool's Supreme Care HSCX 10441 dryer is an A++ rated state-of-the-art design.

- H86xW60xD66cm



Over £850

↓ **PERFECT PERFORMANCE**

The TKB 640 WP from Miele uses clever sensors to set the optimum drying time based on the mineral and moisture levels in clothes.

- H85xW60xD64cm



← **SUPREME CLEANING**

Siemens' iQ700 WT4HY790GB comes with a self-cleaning condenser, sensor drying and a range of special programmes, including mixed fabrics, wool drying, outdoor, towels, blankets and pillows.

- H84xW60xD63cm



3 OF THE BEST
laundry baskets

STOCKISTS
Turn to p172



← **NAUTICAL STRIPES**

Organise your clothes with this chic monochrome bag from Rigby & Mac

→ **COUNTRY CHARM**

For something more classic, this rustic woven design from Sisters Guild fits the bill



← **ON-TREND GEOMETRICS**

Make a style statement with Ferm Living's Spear laundry basket, from Cloudberry Living



FEATURE HAYLEY GILBERT

ON SALE NOW

UNTIL
31
DECEMBER

GoodHomes

Ultimate Christmas magazine

From Britain's fastest-growing homes magazine

ONLY
£3.99

INCLUDES

- ★ **FREE** 4 festive Christmas cards
- ★ **FREE** 20-page baking magazine
- ★ **FREE** ticket to Ideal Home Show and The Cake & Bake Show
- ★ **WIN** a £900 CDA range cooker
- ★ **SAVE** at Sass & Belle and Bloom & Wild



168 PAGES
OF SEASONAL
STYLE

SIMPLE CRAFTS



ELEGANT TOUCHES



EASY ENTERTAINING



BUY YOUR COPY TODAY at selected high-street retailers, including Asda, Marks & Spencer, Morrisons, Sainsbury's, Tesco, Waitrose, WHSmith & more

آموزشگاه انعکاس منبع جدیدترین اطلاعات، مقالات و دوره‌های آموزشی دکوراسیون داخلی

Enekas.Academy

Enekas.Academy

BATHROOM MAKEOVER 1

'THE BLUE TUB IS A FUN TWIST'

Becky Cawthorne-Smith transformed her space into a sophisticated-yet-playful scheme



BEFORE



BATHROOM DETAILS

HOMEOWNERS

Becky Cawthorne-Smith, a bespoke events company owner, and her husband Paul Maguire, a managing director

AGE 43 and 44

FAMILY Jed, 10, and Kitty, 6

LOCATION

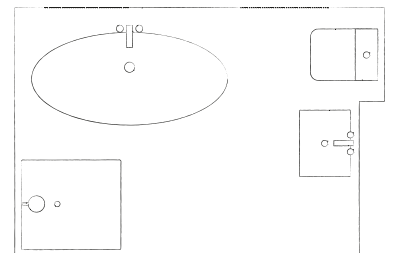
Weybridge, Surrey

PROPERTY Five-bedroom, detached Edwardian house

COST OF NEW BATHROOM

Sanitaryware	£3,900
Shower	£3,125
Tiles	£1,538
Lighting	£100
Radiator	£1,150
Blinds	£364
Paint	£165
Mirror	£30

TOTAL £9,882



SIZE OF ROOM
L3.2xW2.5m



EXPERT TIP

Frame a half-tiled wall with a contrasting trim, such as Fired Earth's 1cm-thick suede design, £2.95 per 20cm length, available in black, mink or white

Looking to settle in the rural town of Weybridge after living in London for many years, Becky Cawthorne-Smith and her husband Mark felt a strong pull towards their rather ramshackle Edwardian property as soon as they saw it. 'It was a lovely solid house near the river, and the proportions were great, but nothing was to our taste,' says Becky. 'However, we could see instantly how we could make it work – it was too good an opportunity to miss.'

The family bathroom was one of the first projects they tackled. Although it had a large footprint, the decor and fittings just weren't hitting the right note. 'There was lots of marble and it all felt a bit heavy. It was high quality, but the most obvious omission seemed to be a separate shower,' she remembers.

Becky knew how she wanted the new bathroom to look. 'Understated elegance was my aim, staying true to the period of the house.' Finding nearly everything she wanted in one place – the nearby Fired Earth showroom in Cobham, Surrey – she used their designers to crystallise her ideas. 'It made sense to keep the bath in between the two windows and for the sanitaryware to stay in a similar spot, as the pipework was already there. But there was a towel rail the other side of the original basin that looked crammed in, so that had to go,' Becky explains. Replacing the existing radiator with an overhead rack-style model above the WC gave a more spacious feel. 'There was another heated rail on the other side, which was more in keeping ▶

← BOLD SHADE

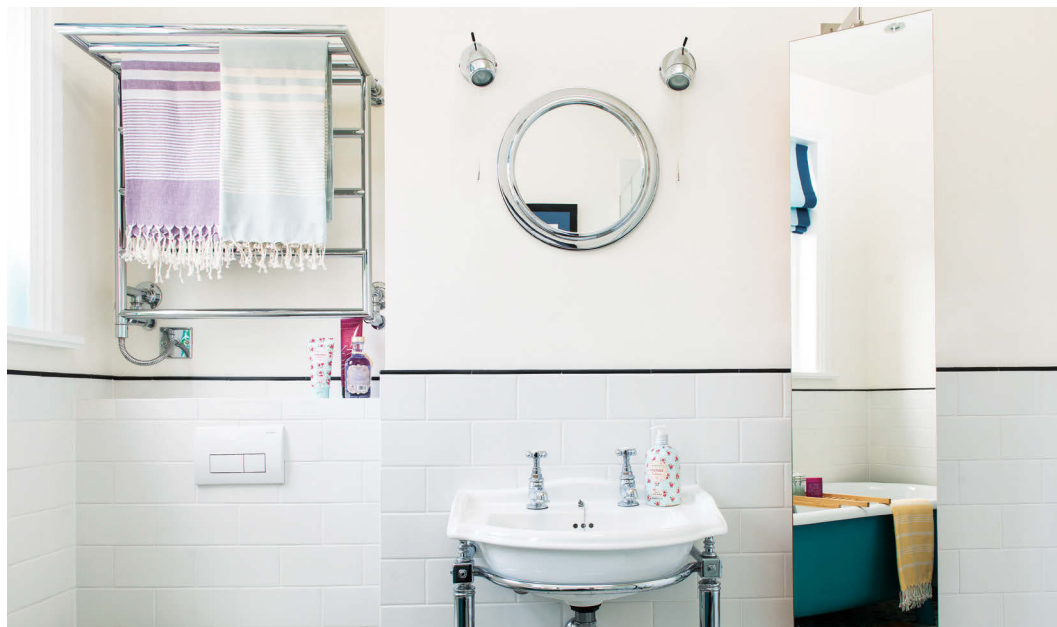
The neutral colour scheme has been livened up with a vibrant bath so it appeals to children as well as adults

↓ SLEEK SOLUTION

Building a false wall for the pipework has enabled Becky to install a modern wall-hung WC with a discreet flushplate

WORK CARRIED OUT

The old bathroom suite has been ripped out and space for a separate shower planned in, with a new enclosure fitted. The room was also retiled and painted





CLEAR CHOICE

With plenty of room for a shower, Becky has gone for a large rectangular model in a sympathetic style

and in good condition, so we've kept that, but just moved it along a bit to make room for the shower.'

The new enclosure needed to be rectangular on the wall opposite the tub and bespoke doors have been added to make it the right shape. 'The original marble tiles were floor-to-ceiling, which was too much for me, so our new plain metro designs only go up halfway, and the walls above aren't painted a stark white but a very pale pinkish tone. I've added pattern on the floor for a bit of texture and interest.'

With the basics in place, Becky debated how to add a touch of fun. 'I wanted it to be appealing to the children, but also to grow with them and not be too infantile for guests, so I added a funky element by having the bath painted a really vibrant blue.'

The couple now have no problem telling Jed and Kitty it's bath time. 'They rush to leap in,' Becky says. 'I'm so glad I was brave with the colour of the tub too, as it's the first thing people comment on.'

LOOK FOR LUXE

Inject colour with hammam towels



↑ SOFTLY DOES IT

Honeycomb large towels, Ville & Campagne

Shopping list

SANITARYWARE For a similar bath, try the Mali, £1,600; for a similar washstand and basin, try the Battersea, £1,000; Classic concealed shower, £1,275; tray, £750; doors, £1,100; Maida Vale WC, £925, all Fired Earth **TILES** Terrazzo floor tiles, £295 per sqm; suede white wall tiles, £54.90 per sqm; suede black trim, £2.95 per tile, all Fired Earth **MIRROR CABINET** £375, Fired Earth **TOWEL RAIL** Holmwood, £1,150, Fired Earth **PAINT** Walls in debutantes gown eggshell; bath in Mrs Booth eggshell, both £55 per 2.5ltr, Fired Earth **BLINDS** £182 each, Laura Ashley **MIRROR** £30, eBay **SPOTLIGHTS** £50 each, eBay **TOWELS** £28 each, Drift Linens **ACCESSORIES** Duckboard, £60; rack, £45, both Fired Earth. Family tube map, £28.50, Kiaco for Notonthehighstreet.com

STOCKISTS

Turn to p172

IDEAS TO STEAL

Adapt some of Becky's ways to make the most of your bathroom



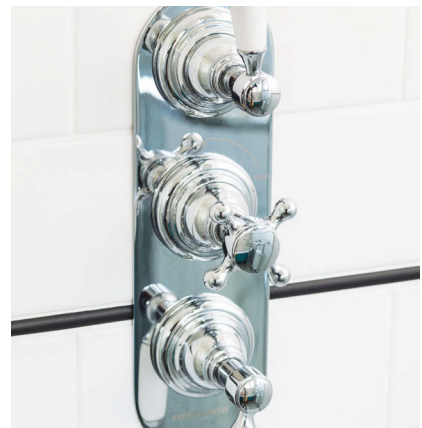
↑ THINK DUAL PURPOSE

Becky sourced a clever swivel mirror storage unit to keep toiletries tidy



↑ INTRODUCE PATTERN

Geometric tiles in subtle tones won't overpower a restful scheme



↑ INCLUDE PERIOD DETAILS

Be consistent with your property's era to ensure a cohesive look



STYLING TIP

Turn a radiator into a feature by co-ordinating it with existing furniture and fixtures, highlighting it with a backdrop of elegant mosaic tiles

BEFORE



BATHROOM DETAILS

HOMEOWNERS

Karen Hibbert, 50, and her husband Martin, 49, both chartered accountants

FAMILY Matthew, 19, and Jessica, 17

LOCATION Wynyard, County Durham

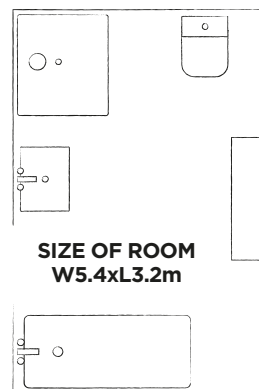
PROPERTY

Four-bedroom, detached house, built in 2001

COST OF NEW BATHROOM

Fixtures & fittings	£17,857
Wall & floor tiles	£5,127
Underfloor heating	£680
Wallpaper & curtains	£2,000

TOTAL £25,664



SIZE OF ROOM
W5.4xL3.2m

BATHROOM MAKEOVER 2

'OUR EN SUITE IS HI-TECH'

Karen Hibbert has created the ultimate modern space that's full of helpful gadgets

After putting their own stamp on the main living areas of their four-bed home, Karen and Martin Hibbert's thoughts turned to upgrading the bathrooms – starting with the largest of the two. 'We wanted to tackle our en suite first as it's actually the biggest,' Karen explains. 'But considering it was such a large space it just didn't feel that huge. The corner bath was difficult to lie down in and the lighting was inadequate. Also, the layout just didn't work with the shower behind the door and the sink tucked away in the corner.'

Specialist bathroom company Domani was employed to undertake the project, factoring in the five must-haves Karen and Martin had on their wish list: a walk-in shower with both a fixed and hand-held showerhead; a Jacuzzi spa bath; underfloor heating; decent lighting; and plenty of storage. 'As we already had underfloor heating downstairs, I knew it would be essential if we were having a tiled floor,' says Karen. As for the overall style, the couple wanted the room to feel contemporary and sleek. 'I love mirror-effect finishes, but I wasn't necessarily thinking of going for black and grey when we first started looking,' she adds. 'The design simply evolved as we started selecting fittings.'

As well as choosing a stunning scheme, the Hibberts went to town on innovative fixtures. 'Martin's a big gadget man,' Karen explains, 'so he was keen to integrate the latest in technology, including a bath that fills itself to the correct temperature. You can even turn on the shower ▶

← MONOCHROME MIX

Boutique hotels were the inspiration for the black glass panels, walk-in shower and low-level LED lights

↓ TACTILE TOUCHES

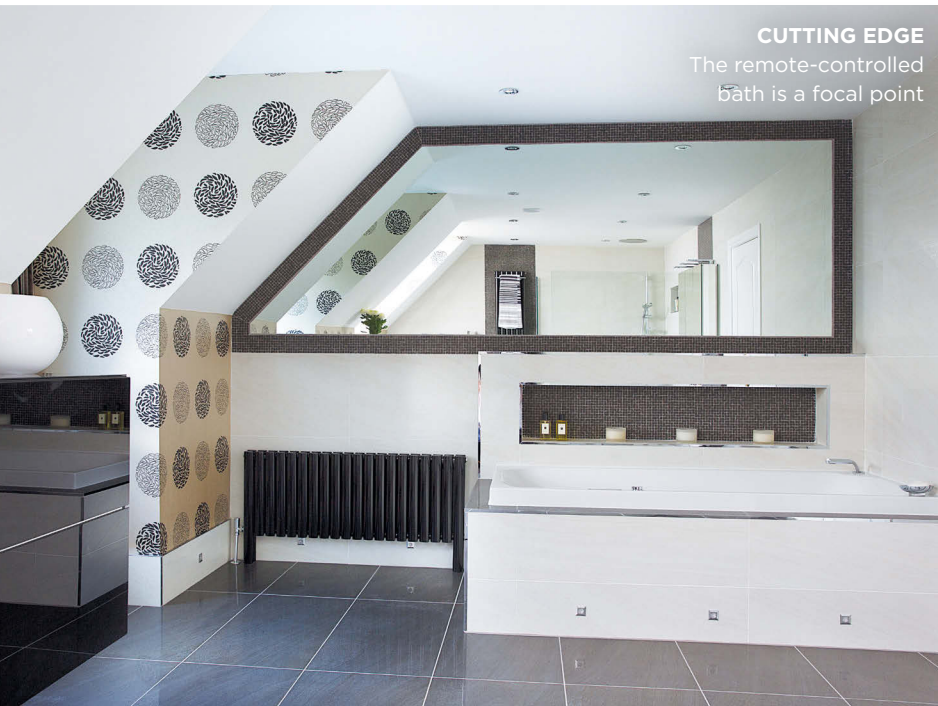
Eye-catching printed wallpaper and luxe curtains soften the minimal sanitaryware and simple palette

WORK CARRIED OUT

The positions of the sink and shower were swapped and new underfloor heating, cabinetry, lighting and sanitaryware were installed



آموزشگاه انعکاس منبع جدیدترین اطلاعات، مقالات و دوره‌های آموزشی دکوراسیون داخلی



CUTTING EDGE

The remote-controlled bath is a focal point

IDEAS TO STEAL

Be like Karen and consider finer details when planning a scheme



↑ GO FOR GLOSS

High-shine black surfaces help to bounce light around a space

or bath with an iPhone.' The thermostatic controls of the shower and the basin tap also feature other helpful digital elements. 'The tap is programmable,' Karen explains. 'I've set it up so that it's one click for warm water and two clicks for cold.'

A mixture of ceiling spots, LED lights around the tiled skirting boards and task lighting above the vanity unit have solved the illumination issue. 'The ceiling lights are dimmable, which is nice when you're having a relaxing bath, and the ones above the sink are brilliant for putting on make-up.'

Bathroom fitted, Karen's interior designer friend Pam Willis of Graham Willis Interiors stepped in, bringing her pattern books for wallpaper. 'I chose a beautiful floral design by Kandola for the wall by the two windows,' says Karen. 'It makes it feel more like a room rather than just a functional space.'

With the project now completed and, delighted with the end result, Karen and Martin say they wouldn't change a thing. 'The bathroom is just how we imagined,' she beams. 'It looks spectacular.'

LOOK FOR LESS

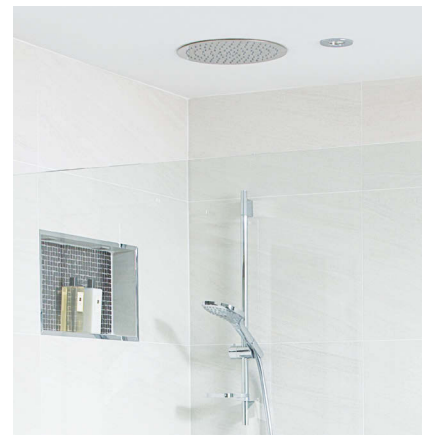
Add sleek storage



£250

↑ ON REFLECTION

Storjorm two-door mirror cabinet with built-in lighting, Ikea



↑ INTEGRATE FITTINGS

A showerhead set into the ceiling exudes contemporary elegance



STOCKISTS
Turn to
p172

↑ THINK SYMMETRICAL

Aligning multiple elements with care creates a sense of balance

Shopping list

SANITARYWARE Duravit Happy D.2 bath, £2,780; Duravit digital filler with pull-out shower, £2,836; Duravit Puravida wall-mounted WC, £842; Keuco Edition 11 two-drawer side unit, £2,332.70; Wisp digital mixer tap, £632; Vado Aquablade round showerhead, £324; Hansgrohe Raindance handheld shower, £151; Keuco Edition 11 vanity unit, £1,239.30; Kudos Ultimate glass shower panels, £518; Keuco Royal Universe mirror cabinet, £997.50, all Domani
TILES Q-Stone Minimal Day and Night porcelain tiles, £70 per sqm; Q-Stone Minimal Night mosaics, £41 per sheet, all Domani
RADIATORS Revive floor-mounted radiator in gloss black, £415; Revive vertical double-panel radiator in gloss black, £337.50; towel rail, £85.84, all Domani
WALLPAPER Vogue champagne wallpaper, £104 per roll, Kandola. For similar curtain fabric, try Designers Guild at Tangletree Interiors
TOWELS For similar, try Christy
ACCESSORIES Linea stainless steel soap dispenser, £9.60, House of Fraser

Add style with WALL TILES

Give your bathroom a striking new look with one of these designs to suit every scheme

Tiled surfaces are practical for bathrooms, as they're hard-wearing, easy to keep clean and water-resistant, plus, they're ideal for adding colour, pattern and texture to your walls.

The most popular materials include stone, ceramic, porcelain, and glass, with a wide range of designs available to suit every budget. Large-format options will make a small space feel bigger, while light-reflecting, glossy styles are suited to rooms with limited natural light. If you want to use the same tiles on walls and floors to create uniformity, shop for ranges that are suitable for both.

To create a designer look on a budget, only tile small areas to draw attention to a key feature. Stylish options include installing a floor-to-ceiling panel behind a freestanding bath, a splashback above a basin, or a bold design highlighting a walk-in shower.

The latest trend is about creating a unique look, so whether you opt to mix and match patterned styles or create a geometric effect with hexagon-shaped tiles, it's never been easier to achieve a personalised scheme.

ON TREND

NEW WAY TO LAY

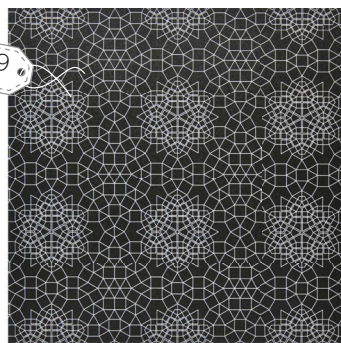
Give brick-shaped designs an update by fitting in a herringbone pattern. Fired Earth's Ravello Frezza ceramic wall tiles come in five colourways.

• H20xL40cm



Under £27 per sqm

£16.99
PER SQM



↑ AUTHENTIC GEOMETRICS

Perfect for creating a bold look, Tile Mountain's Meissa porcelain design from its Marrakech range is inspired by the traditional tiled courtyards of Morocco. Suitable for use on both walls and floors.

• H30xL30cm



COLOUR
CHOICE

← GOOD VALUE

Featuring an industrial-inspired print, these Aura ceramic tiles from B&Q are perfect for adding subtle pattern. They are available in seven colours, including concrete, mulberry and taupe (pictured). • H10xL30cm

→ GLAMOROUS MOSAIC

An ideal solution for a statement splashback behind a basin or for adding wow factor to a plain tiled wall as an inset border, this glass mosaic tile in silver and blue from Wickes is supplied on a mesh backing for easy installation.

• H28xL26cm



EXPERT TIP

It is possible to fit tiles well yourself, but consider hiring an experienced tiler to ensure a professional finish – particularly if you are using expensive designs

CONTEMPORARY COLOUR

With Dulux naming denim drift as its must-have colour of 2017, this Colette ceramic tile in navy by Roca is a great way to tap into the trend. The watercolour effect adds depth and texture, and you can team it with the beige version to soften the look. Available from Boyden Tiles.

• H21.4xL61cm

NEED TO KNOW

■ **CERAMIC** is widely available and affordable. Easy to cut and install, it requires minimal maintenance as you'll only need to update the grout regularly.

■ **PORCELAIN** tiles are denser than ceramic, so are considered more hard-wearing. The latest printing technology means it is available in realistic wood and stone-effect designs, making it a more affordable alternative.

■ **STONE** includes materials such as marble, slate, limestone and

travertine – perfect for creating a high-end, luxury look. Unlike ceramic and porcelain, however, they require more maintenance, with the majority of options needing to be sealed after installation.

■ **GLASS** designs, such as mosaics, are easy to clean and are the perfect choice if you want to create a glamorous scheme. Ideal for reflecting light around a space, they work particularly well when used as an inset border or splashback.

£27-£50 per sqm

← EASY UPDATES

Part of Craven Dunnill's Renaissance collection, these striking ceramic tiles in a subdued palette are great for adding interest. Choose from the 3D effect of the Bravura Sense or the mix of eight motifs on the Bravura Custom.

• H29.5xL59.5cm

→ HIGH SHINE

Available in wide variety of colours, ranging from neutrals to bold greens and dark greys, these ceramic Manhattan wall designs from Tile Giant feature a slightly bumpy texture and glossy finish.

• H7.5xL30cm

DESIGNER STYLE

↑ REALISTIC LOOK

If you want to create the high-end appearance of marble without the budget-busting price tag, Bathstore's Marble Arch ceramic field tiles are a fantastic alternative, thanks to their luxurious Carrara stone effect.

• H24.8xL49.8cm

BIG IMPACT

Add a touch of drama to any black-and-white scheme with Mono Patchwork metro tiles from Walls and Floors. Supplied as a mix of 16 patterns, it's easy to be creative and design your own unique feature.

• H7.5xL15cm

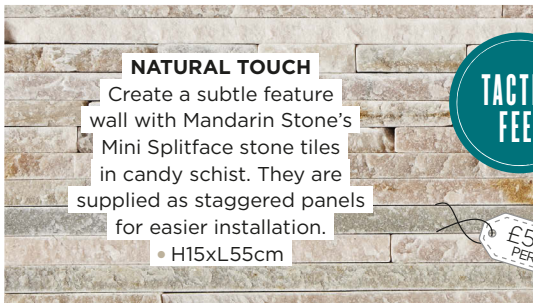
£50-£70 per sqm



← SLEEK SLATE

Scored to give the appearance of several smaller tiles on one design, the natural-looking Nero tile from Bathrooms.com can be used to define a walk-in shower area in your scheme.

- H20xL30cm



NATURAL TOUCH

Create a subtle feature wall with Mandarin Stone's Mini Splitface stone tiles in candy schist. They are supplied as staggered panels for easier installation.

- H15xL55cm

TACTILE FEEL



↑ FOCAL POINT

By combining plain and patterned rhombus-shapes in a range of colours from The Baked Tile Company's Creative Geometrics range, you can design a bespoke look for your wall. Continue on to the floor for a striking effect.

- H14xL24cm

NEXT MONTH Radiators



↑ MODERN MIX

Showing that contrasting walls and floors can be very effective, Original Style's Half Tile glazed ceramic wall tiles are the ideal contrast to its patterned Victorian floor tiles. Available in 26 colours, including London Stone as pictured.

- H7.5xL15.2cm

Over £70 per sqm



↑ GRAIN DETAIL

These Artisan porcelain designs in Aspen from Johnson Tiles have a wood-surface effect and are also available in three other sizes and five additional timber-effect colours.

- H15xL90cm



PRETTY PATTERNS

For a period scheme, look no further than traditional encaustic tiles from Indigenous. There are 20 designs, including these Almeria Solitaire and styles.

- H20xL20cm

3 OF THE BEST wall lights

STOCKISTS Turn to p172



← FLEXIBLE SOLUTION

A great-value buy, Ikea's Vittemolla light can be installed with the round glass shade facing upwards or downwards

→ BRUSHED METAL

The Putney light in satin nickel from The Farthing is a classic choice for bathrooms

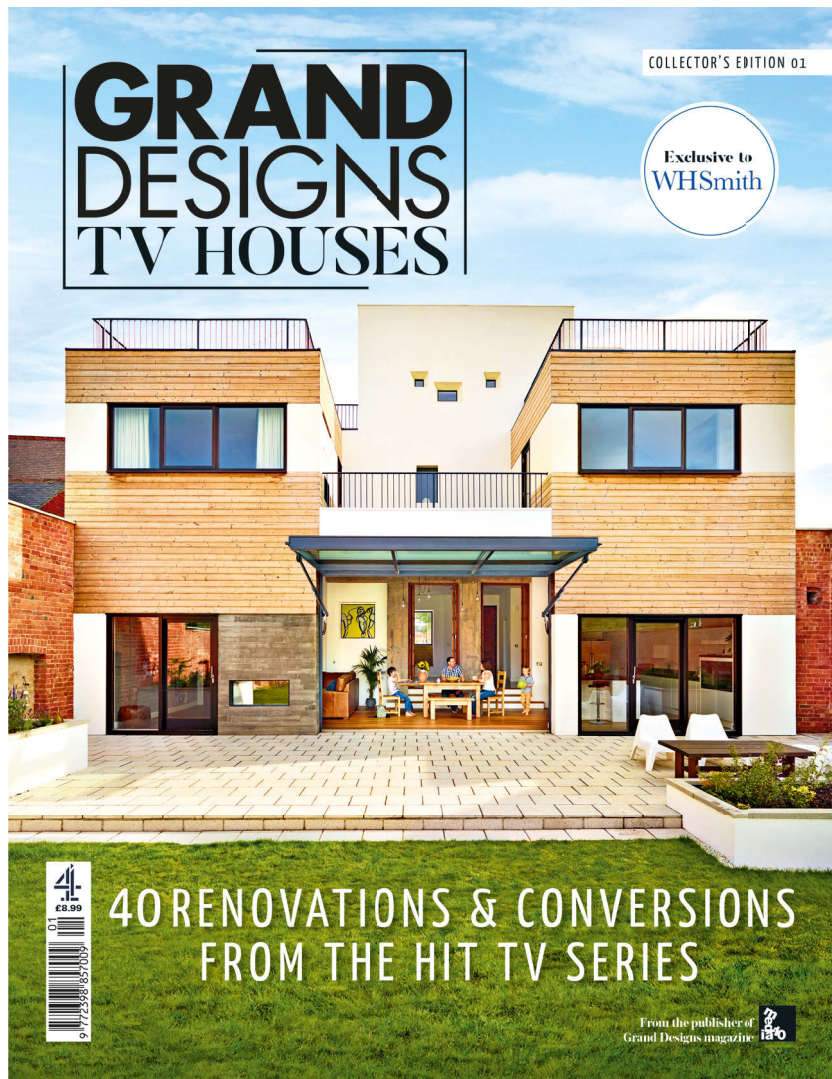


← ELEGANT ADDITION

Astro Lighting's Lincoln design features a polished-chrome finish with a stylish frosted glass diffuser



Grand Designs COLLECTOR'S EDITION



To commemorate nearly two decades of the groundbreaking TV series, Grand Designs magazine has created this special issue, comprising a comprehensive collection of the best renovations, conversions and extensions from the show's history. As well as some of the favourite Grand Designs Awards winners, it's packed with projects and inspiring ideas. This collector's edition is not to be missed.

ONLY
£8.99
while
stocks last

IN THIS ONE-OFF ISSUE, DON'T MISS...



THE CAVE



THE LIFEBOAT STATION



THE EXTENDED TOWER



THE OLD CINEMA

To buy your copy

BUY IT in your local WHSmith CALL 01293 312152 and quote bookad16
VISIT granddesignssubscriptions.com/bookad16

آموزشگاه انعکاس منبع جدیدترین اطلاعات، مقالات و دوره‌های آموزشی دکوراسیون داخلی

Enekas.Academy

Enekas.Academy

EXTENSION 1

‘GETTING GOOD ADVICE WAS KEY’

Finding the right team to help them was essential to the success of Sam and Simon Ogden’s modern new space



AFTER

← OPENED UP

With a fully glazed wall featuring bi-fold doors, the extension has transformed the rear of Sam and Simon’s property

→ VIBRANT TOUCH

Sam chose orange as the main accent colour, co-ordinating items such as the bar stools and pendants



BEFORE



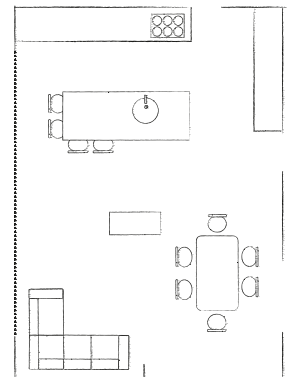
EXTENSION DETAILS

HOMEOWNERS Sam and Simon Ogden, who both work in healthcare
FAMILY Alex, 16, and Harry, 14
LOCATION Harpenden, Hertfordshire
PROPERTY Four-bedroom detached house, built in the late 1990s

COST OF THE EXTENSION

Professional fees	£3,500
Build cost	£78,000
Bi-fold doors	£7,000
Kitchen, worktops & appliances	£50,000
Flooring	£1,800
Fireplace, including flue & installation	£7,000

TOTAL £143,800



SIZE OF ROOM
L7.35xW5.45m



DESIGN TIP

Like the Ogdens, utilise a large pillar as a modern fireplace and turn a structural necessity into a striking focal point

PROJECT BRIEF

To knock the existing kitchen and separate dining room into one space, then extend into the garden to create a large, open-plan layout

Converting their double garage into a playroom for their two children gave Sam and Simon Ogden the renovation bug, opening their eyes to the option of redesigning other areas of their home. 'We moved into this house just after Harry was born and the layout worked well when the boys were small,' says Sam. 'Since then, however, the way we want to live here has changed considerably.'

Although thrilled with the additional living space the garage conversion created, the property still lacked the large open-plan kitchen-diner that the couple dreamed of. 'We've always loved entertaining, but whenever we had friends round everyone seemed to congregate in our small kitchen, which was always tricky when I was trying to cook,' explains Sam. 'We liked the idea of extending the rear of the house to create an open-plan space that would work just as

well as an entertaining area as it would an informal living room. Somewhere where we could relax with a newspaper and cup of coffee at the weekend.'

After saving up for several years, the couple were ready to start. With the key elements of their brief already mapped out, they approached local company Sue Murphy Interiors for advice on fine-tuning their plans. 'Sue worked on a couple of projects for friends, so we were keen to see how she could help us too,' explains Sam. 'Perhaps naively, I'd thought interior designers were only able to help with choosing finishing touches such as soft furnishings, but Sue did so much more, offering advice on everything from planning the layout and size of the extension to helping us brief the kitchen designers.'

With the couple hiring the architect and builder who had completed their previous project, plans were drawn up for an extension stretching the full ▶



GOOD IDEA

In an open-plan kitchen-diner, a raised breakfast bar can help to screen the food preparation zone from the rest of the room

width of the house. As it fell within the guidelines for permitted development and therefore didn't need planning permission, work soon got under way, with the build completed in around 12 weeks.

Looking at the home today, there's no trace of the previously awkward layout. The large, open-plan space has contemporary bi-fold doors leading out on to the garden. Four roof windows ensure lots of natural light, while a built-in fire forms a striking centrepiece. 'For structural reasons we had to have a pillar in the middle of the room, so Sue suggested we turn it into a feature fireplace,' says Sam. 'It's a fantastic addition and is always such a talking point.'

Designed by local firm Brynmor Interiors, the modern handleless kitchen features a combination of sleek matt-white units and a wall of full-height cupboards with concrete composite doors, giving an

on-trend, industrial look. Elsewhere, there's plenty of space for a large dining table and comfy corner sofa, while the area in front of the fire is ideal for some post-dinner dancing. 'I've always wanted to have somewhere to boogie at our parties, so it was on my wish list from the beginning,' says Sam.

The couple's favourite feature, however, is the lighting scheme, which Sue helped design. 'In Sam and Simon's extension it was important to create layers of adjustable illumination for different uses,' explains Sue. A mix of ceiling downlights, uplighters, LED strips under the cupboards, and pendants allow them to create everything from bright task lighting to more atmospheric mood lighting.'

'The extension is even better than we imagined,' adds Sam. 'Spending a little bit extra money to get the help we needed was worth every last penny.'

↑ IDEAL LAYOUT

The scheme features distinct areas for cooking, entertaining, eating and relaxing

↓ SEAMLESS LOOK

A bespoke wooden worktop wraps around the island and down to the floor

STOCKISTS
Turn to
p172

Shopping list

KITCHEN Bespoke Zeyko units, worktops and built-in Miele appliances, £50,000, Brynmor Interiors. For a similar tap, try Zecca single-lever sink mixer with pull-out spout, £284.40, Just Taps Plus **APPLIANCES** For a similar hob, try Miele KM6381 integrated induction hob, £1,475; for a similar oven, try Miele H2661BP-1 built-in multifunction oven, £1,099, both John Lewis **GLAZING** Bi-fold doors, £7,000, Origin **FLOORING** Porcelain tiles in riverstone grey, £1,800, Butterfields Building & Timber Supplies **FIREPLACE** Nordpeis stove, £7,000, M W Forsyth Fireplaces **LIGHTING** Decode Vessel pendants in bronze, £216 each; Tam Tam wall lights in orange/green, £119 each, all Viaduct. Discoco 53 pendant light, £330, Twentytwentyone. **FURNITURE** Pam bar stools in orange by Ligne Roset, £336 each, Heal's. Sofa and footstool, £2,246, Camerich. Bespoke sideboard/cupboards, £1,500, Dee Jay Carpentry



FEATURE BETH MURTON PHOTOGRAPHS PETER LANDERS

آموزشگاه انعکاس منبع جدیدترین اطلاعات، مقالات و دوره‌های آموزشی دکوراسیون داخلی

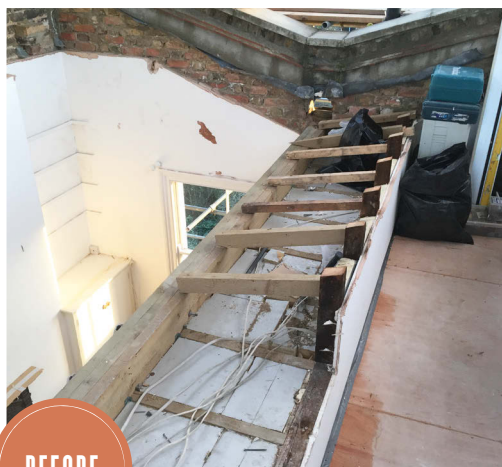
Enekas.Academy

Enekas.Academy

EXTENSION 2

'WE NOW HAVE THE SPACE WE NEED'

Building up into their attic was a cost-effective way for Alex and Laura Kennedy to gain a stylish master suite



BEFORE

EXTENSION DETAILS

HOMEOWNERS

Alex Kennedy, a project manager in the rail industry, and his wife Laura, who works for the BBC

FAMILY Ava, 4

LOCATION Stoke Newington, London

PROPERTY Three-bedroom Victorian flat conversion

COST OF THE EXTENSION

Build cost £67,128

Architect fees £6,782

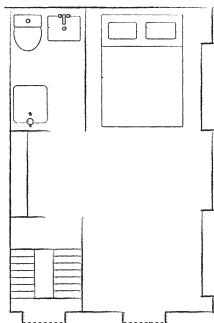
Additional fees £4,177

En-suite fittings £3,733

Wood flooring £975

Bedroom fittings £5,496

TOTAL £88,291



SIZE OF ROOM L8.2xW4.8m

AFTER



PROJECT BRIEF

To convert the loft space and create a spacious master bedroom with an en suite and study area





EXPERT TIP

If your loft brings in lots of sunshine, wall lights and table lamps are the only other illumination the space may require

↑ UNDER THE EAVES

With reduced head height under the roof, this sloped area at the front of the house is the ideal location for the Kennedys' bed

↖ BRIGHT IDEAS

A large roof window and a mirrored panel behind the basin enhance the light entering the en suite

← COSY CORNER

Wall lamps help to zone off this peaceful retreat. Neutral paint colours enhance the room's calm feel

A chance conversation with one of their neighbours was the starting point for Alex and Laura Kennedy's redesign project. 'Our flat is situated on the top two floors of a converted Victorian house and has what is known as a London valley roof. This is where the two sides slope down into the centre in a butterfly shape and meet at a gully,' explains Alex. 'For this reason we had always assumed that we couldn't convert the attic into a bedroom space, but talking to someone who owned a similar property and was doing just that made us investigate the possibility of extending further.'

That one lucky exchange led the couple to add an extra storey to their flat, turning their two-bedroom property into a spacious three-storey home with a trio of bedrooms and fantastic views of the capital.

But first, they had to obtain permission to go ahead with the project from the freeholder, who lives in the lower apartment. Once this was in place, the Kennedys then worked with an architect on the first set of plans for a mansard extension – which involves raising the side walls and creating a new steep roof pitch to front and rear – that would

house a master bedroom and en suite. Dan Gibbons of APE Architecture & Design was commissioned to take on the next stage of the project. He tweaked the initial blueprints for the loft slightly, with the amended plan also approved by the council. 'By moving the en suite to the area under the sloping roof at the front of the house, we could create more space in the main bedroom,' Dan explains.

When the project went out to tender, however, Alex and Laura realised that they'd need to increase their initial budget significantly if they wanted to achieve their vision. 'We'd originally estimated around £50,000 for the build costs – however, over the course of the year we'd been planning the conversion, the quotes we received ranged from £68,000 to £100,000,' explains Alex. 'It meant we had to reduce the specification of the finished space slightly to bring it in closer to our original budget.'

Impressively, Outside In Construction completed the build in just under five months, during which time the couple and their daughter, Ava, continued to live in the flat. The finished L-shaped layout features a wall of built-in storage at the entrance to the attic, freeing up the rest of the room for the ▶



GOOD IDEA

Reclaimed wooden Victorian flooring and a reproduction radiator help to inject period charm into a modern extension

STOCKISTS
Turn to
p172

bedroom zone at one end and a small study area at the other. 'It's lovely to be able to lie in bed in the morning and look out through the window opposite, as we can see right down to the City of London with fantastic views of The Shard,' says Alex.

The well-designed en suite is spacious enough for a contemporary walk-in shower and a traditional-style basin, with a large rooflight carefully positioned to provide the necessary head height above the WC and basin area, as well as illuminating the space.

To ensure the new scheme was in keeping with the architecture and style of the rest of the period property, the couple worked alongside Dan to source authentic fixtures and fittings. These included the reclaimed Victorian pine floorboards, a cast-iron fireplace found at a London reclamation yard, a reproduction radiator, and statement black-and-white encaustic floor tiles for the bathroom – all of which combine to give the loft instant character.

'Converting the attic was well worth the investment,' says Alex. 'With increasing property prices, stamp duty and moving costs, three-bedroom homes in this area were well beyond our budget. This was a more cost-effective way to get the space we needed, creating a three-bedroom house of our own with a fantastic master suite that we love spending time in.'



↑ PERFECT FIT

A period fireplace provides an elegant focal point, while a compact study area is tucked into an alcove

← CLEVER CARPENTRY

Built on site by a joiner, floor-to-ceiling, handleless wardrobes are designed to blend into the background

Shopping list

FLOORING Reclaimed floorboards, £975, Encore Reclamation
LIGHTING San Marino bronze-plated wall lights, from £62 each, Astro Lighting
FITTINGS Vintage cast-iron fireplace, £540, Architectural Forum. Reproduction radiator, £429, Cast Iron Radiator Centre
FURNITURE Bespoke wardrobes, £2,040, Dennis Tod Interiors. Shaker bed, £640; three-drawer bedside cabinets, £275 each, all Warren Evans. For a similar vintage chest of drawers, try eBay
TILES Victorian encaustic-effect floor tiles, £134, Tiles Etc. Retro brick wall tiles, £204, Tower Ceramics
SHOWER ROOM Victorian basin with stand, £489; Cleaver radiator, £329, both Burlington Bathrooms. For a similar WC, try CP Hart

Choose your ideal SOFA

From sleek and streamlined to relaxed and cosy, update your space with one of these stylish designs

Purchasing a sofa is a major investment, so before you start, think carefully about what its purpose is going to be. Are you looking for a sleek, contemporary model for occasional use, or a big, squishy one to fit the whole family on? It sounds obvious, but try before you buy to make sure a design is comfortable as well as stylish – and remember if you're shopping online this may not be an option.

While it is important to look at the quality of the upholstery, check the frame as well. Hardwood is more durable than soft timber such as pine. You could also find out how it is joined together: wooden dowels, corner blocks or metal screws and brackets are the most solid fixings.

Upholstery-wise, foam filling is usually supportive and provides a more tailored appearance than feather or fibre-stuffed cushions that give a softer look but require regular plumping. Fabrics fade in direct sunlight, so think about where you position your sofa and consider that leather, while durable, can crack if it is too near a radiator.



ON TREND

PRACTICAL ADDITION

Chaise-style sofas are perfect for stretching out on. Look for designs that include storage space, like this Ashwell four-seater sofa bed by Willow & Hall.

• H91xD91-180xW240cm

Under £400



↑ COMPACT OPTION

At just under 1.4m wide, the George Home Ramona sofa is ideal for smaller rooms – and budgets. Upholstered in durable yarn dye fabric, it comes in four colours, including this hot pink.

• H81xD81xW137cm



THREE SEATER

↑ COOL COMFORT

Ikea's Norsborg three-seater design in Gräsbo dark blue has a choice of two leg colours (beech or grey) and its washable covers feature handy pockets in the armrests.

• H85xD88xW213cm

→ SOFT TOUCH

Available in five colours including aubergine, pictured, the Andover Mills Broadway Village three-seater from Wayfair is made in a tactile chenille-style fabric, complete with four large scatter cushions. A two-seater size is also available.

• H97xD88xW191cm



AFFORDABLE STYLE

Featuring plump cushions, Harveys' Cargo Layla two-seater sofa in Wedgwood blue provides comfort in a simple, solid design. It comes in 18 colours at the £389 price (and 17 at £289) and there's a sofa bed and footstool available.

• H92xD95xW158cm



EXPERT TIP

Cut out a paper template so you can visualise how much space a sofa will take up, and allow enough leg room between it and other pieces of furniture in your scheme



£389

NEED TO KNOW

■ MODULAR MODELS

enable you to create your own sofa set-up and provide the most flexibility. They can be positioned in different configurations, are easy to move around and ideal for getting in through narrow doors or up stairs.

■ CORNER STYLES

are good for large households and for defining living spaces in an open-plan scheme.

They are available in left- and right-hand chaise configurations.

■ **SOFA BEDS** come in many forms, with various mattress options. Three-fold designs usually have foam mattresses that are fine for occasional use. Consider a two-fold option that allows for a more comfortable, deeper, base for sleeping on if it is going to be used on a regular basis.

£400-£800



£449.99

↑ ZESTY COLOUR

The retro-inspired Lexie range by Hygena at Argos includes this large sofa with smart detailing. As well as yellow, the design comes in grey, poppy red and green.

• H86xD85xW190cm

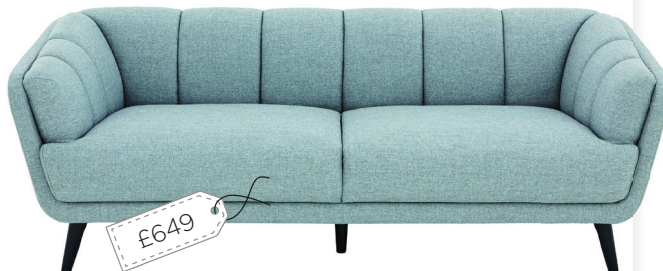


£599

↑ CLASSIC CHIC

A contemporary version of a traditional Chesterfield, Furniture Choice's Hampton three-seater sofa is shown here in slate grey and is also available in oatmeal.

• H75xD84x216cm



£649

↑ CURVED DESIGN

Steeped in Fifties style, the rounded lines and stitched detailing of Very's Marcel three-seater sofa recreates an iconic look. Scandi-style legs add to the vintage vibe.

• H76xD88xW204cm

MODERN SHAPE

Raised up on tall chrome legs, the Drew three-seater sofa by Living It Up, seen here in flint grey, strikes an excellent balance between slick 21st century design and soft, inviting comfort.

• H87xD97xW202cm



£709

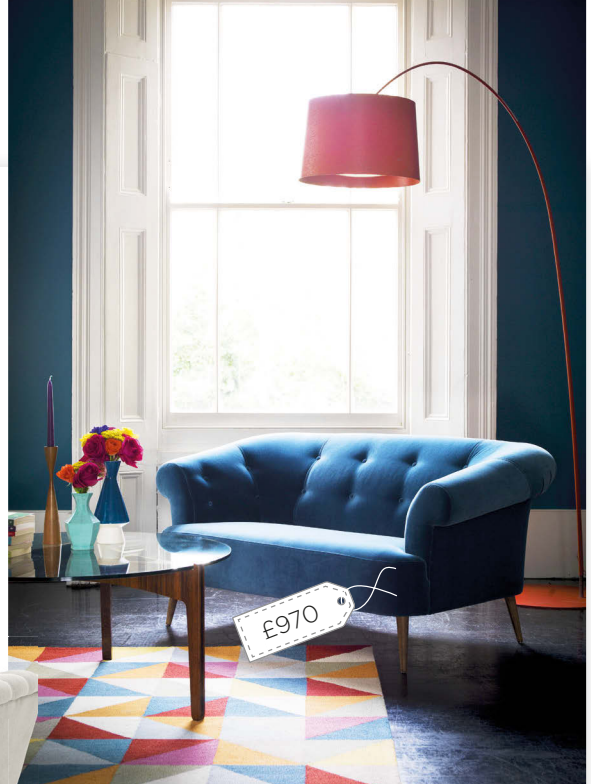
£800-£1,200



✓ **ELEGANT PROPORTIONS**
Slim scroll arms and plump seat cushions give this Phoebe sofa by The Lounge Co a classic shape. It comes in more than 100 fabrics, including country house stripe.
• H90xD97xW165cm

→ **BUTTON DETAIL**

Upholstered in a grey linen-blend fabric, the RV Astley Aceline two-seater design from Houseology has a high back and elegant winged arms and is set on distressed oak feet.
• H80xD89xW170cm



↑ **SOPHISTICATED CHOICE**

Upholstered in deep turquoise velvet made from 100 per cent cotton with a luxurious matt finish, the Zeppelin two-seater design from Sofa.com oozes old-school glamour. A matching armchair is also available.
• H76xD94xW154cm

NEXT MONTH
Open-plan flooring



↑ **STRIKING SHAPE**

The best things come in small packages; this compact Aragon design by Arlo & Jacob commands attention with its high-backed silhouette and Kirby Sahara coral colourway.
• H100xD87.5xW155cm

Over £1,200

↓ **PLUSH TEXTURE**

Cloaked in forest green velvet, the Pillowtalk two-seater sofa by Content by Terence Conran features an ingenious plinth that make it seem as though it's floating above the floor.
• H75xD89xW202cm



↓ **NATURAL MATERIALS**

Laura Ashley's Tarran sofa is available in more than 100 exclusive fabrics including Adele natural woven linen, pictured, as well as tweeds. Made to order, it comes with a choice of chestnut or light oak legs.
• H89xD108xW176cm



3 OF THE BEST
footstools

STOCKISTS
Turn to p172

→ **NORDIC FEEL**

Upholstered in dusk pink fabric, Made's Oslo is a stylish ode to mid-century design



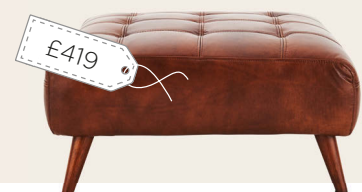
↓ **STORAGE SOLUTION**

Loaf's Stasher has a detachable lid and comes in a selection of fabrics, including bumblebee clever velvet



↓ **LUXURY ITEM**

In soft and supple leather, this Chaser design from Furniture Village is deeply cushioned for comfort



FEATURE JO MESSENGER

NEXT MONTH

180
PAGES OF
INTERIORS
IDEAS

**FEBRUARY
ISSUE ON SALE
3 JAN**

**NEW-SEASON
DECORATING LOOKS**
SHADES OF BLUE
MODERN GEOMETRICS

4 REAL HOMES
FROM A TOWNHOUSE
RENOVATION TO A
COLOURFUL COTTAGE

BEFORE & AFTER
4 INSPIRING MAKEOVERS
2 MUST-SEE EXTENSIONS

BUYER'S GUIDES
HEALTHY APPLIANCES
FABULOUS FLOORING
BATHROOM RADIATORS

PLUS
COMFORTING RECIPES
HEART MOTIFS
UPCYCLED CRAFTS



GET SORTED! STORAGE SPECIAL

**Clever solutions
for every room
of the house**



WIN

**£3,000
BEDROOM
MAKEOVER**

WIN

**£2,000
CALIFORNIA
SHUTTERS**

SAVE

**20% AT
SHARPS
BEDROOMS**

WIN

**£2,000
MODERN
LOG BURNER**

ALL CONTENT LISTED SUBJECT TO CHANGE

آموزشگاه انعکاس منبع جدیدترین اطلاعات، مقالات و دوره‌های آموزشی دکوراسیون داخلی

Enekas.Academy

Enekas.Academy

Plan the perfect NEW YEAR CELEBRATION

Prepare ahead of time and enjoy a relaxed evening with family and friends sharing these recipes from delicious. magazine

Beef shin ragu pie

Great comfort food – this hearty bake with a festive decorative finish should serve eight hungry people

PREP 1½ HOURS, PLUS COOLING
COOKING TIME APPROX 5 HOURS

FOR THE FILLING 50g unsalted butter
• 2 tbsp olive oil • 3 shallots, finely chopped • 5 carrots, sliced • 200g chestnut mushrooms, halved • 3 garlic cloves, chopped • 1kg British beef shin, diced • 60g plain flour • 400g tin chopped tomatoes • 2 tbsp tomato purée • 1 tsp caster sugar • 2 tbsp Worcestershire sauce • 600ml red wine • Few fresh oregano and thyme sprigs
FOR THE PASTRY 500g plain flour, plus extra to dust • 1 tsp fine salt • 1 medium free-range egg, plus 2 yolks, lightly beaten, to glaze • 80g unsalted butter • 80g lard, plus extra to grease

1 Heat 25g of the butter and 1 tbsp of the oil in large, deep casserole. Add the shallots and carrots and fry gently for 5 mins. Add the mushrooms and garlic and fry for 5 minutes. Set aside.

2 Add the remaining butter and oil. Coat the beef in the flour, and brown in the pan for 2-3 mins. Return the veg and add the chopped tomatoes, tomato purée, sugar, Worcestershire sauce, 500ml of the wine and the herbs.

3 Bring to the boil, then simmer gently with the lid on for 3 hours, stirring every 20 mins, to ensure it doesn't stick. If the beef isn't falling apart after this time, simmer for another 30 mins. When ready, stir in the remaining wine and season, then take off the heat and cool.

4 Meanwhile, make the pastry. Put the flour and salt in a heatproof bowl, make a well in the centre, crack in the egg, then cover with the flour.

5 Put the butter and lard in a pan with 200ml water and bring to the boil. When the fat has melted, pour into the flour, mixing well with a knife. When cool enough to handle, knead on a floured surface until smooth. Shape into a disc, cover and leave to rest for 30 mins.

6 Heat oven to 200°C/180°C fan/gas 6. Once the pastry is lukewarm, cut off one third, wrap in cling film and chill. Roll out the rest to a Dia40cm circle. Grease a Dia23xD5cm fluted loose-bottomed tart tin. Line with the pastry, leaving a 2-3cm overhang. Cover with baking paper or foil, then fill with uncooked rice or baking beans. Blind bake for 20 mins. Remove the paper or foil and rice or beans, brush half the egg yolk all over the pastry, then bake for another 13-14 mins. Cut away the overhanging pastry.

7 Fill the case with the ragu then roll out the remaining pastry to the thickness of a £1 coin. Stamp out as many oak leaf shapes as you can and arrange over the filling in a circular pattern, slightly overlapping. Glaze with the remaining egg, then chill in the freezer for 15 mins.

8 Bake pie on a metal sheet for 40 mins until golden. Reduce heat to 170°C/150°C fan/gas 3½ and bake for 20 mins more. Cool for 10 mins before serving.



MAKE A TOAST WITH...

FLAMING RUM PUNCH
In a large jug, mix together **200ml dark rum**, **100ml brandy**, the **juice of 3 oranges**, **45ml grenadine**, **500ml pineapple juice** and **30ml sugar syrup** with a **cinnamon stick**. Cover

and chill until needed. When ready to serve, warm in a pan if you're serving hot, or add ice cubes if drinking cold. Slice up an **orange** and stick **cloves** into the top and bottom slices and float these

on top. Warm a couple of ladlefuls of **brandy** in a pan until steaming, then pour over the oranges and ignite using a long match. Once the flames have died, ladle into glasses garnished with orange.

COOK'S TIP

Simmer the ragu on the hob so it becomes thick - this will help the pie cut well. It will keep for 48 hours if chilled & sealed





COOK'S TIP

Roast squash up to 6 hours in advance. Reheat for 15 mins at 200°C, turning twice, then add the cheese and walnuts

Roast squash with blue cheese & pickled walnuts

Adapt the quantities of this simple side dish to cater for a larger crowd

SERVES 6-8

PREP 20 MINS

COOKING TIME 1 HOUR

2 tbsp olive oil • 1 large (about 1.2kg) butternut squash • 100g vegetarian Stilton (or for a non-veggie option, you could use gorgonzola dolce or Roquefort) • Handful fresh flatleaf parsley, chopped • 4-5 pickled walnuts (try delis or the condiments section of supermarkets), chopped • Squeeze of lemon juice

- 1 Heat oven to 200°/180°C fan/gas 6. Put the oil in a large, shallow baking tray and put in the oven to heat up. Deseed and chop squash into 1.5cm pieces. When the oil is very hot, add squash, season and roast for around 1 hour, turning once or twice, until the pieces are golden and slightly charred.
- 2 Crumble over the Stilton, then return to the oven for 5 minutes so it melts. Sprinkle over the parsley, walnuts and some salt, then squeeze over a drizzle of lemon juice and serve hot or warm.

Coconut & lime cheesecake

A tropical twist on a family favourite

SERVES 12

PREP 45 MINS

COOKING TIME 50-60 MINS

FOR THE BASE Flavourless oil for greasing • 300g digestive biscuits • 50g desiccated coconut • 160g unsalted butter, melted • 25g coconut oil, melted

FOR THE FILLING 560g full-fat cream cheese • 250ml coconut cream (try Blue Dragon) • 397ml tin condensed milk • Juice 4 limes • 4 medium free-range eggs

FOR THE CARAMEL 100g caster sugar • 25g unsalted butter • Splash rum • 75ml double cream, at room temperature • 1-2 pinches sea salt flakes • Pulp of 3 ripe passion fruits

1 Lightly oil a Dia20xD8-10cm loose-bottomed cake tin. Process the biscuits and coconut to fine crumbs, then pour in the melted butter and coconut oil to combine. Tip into the prepared tin. Press the crumbs down with a metal spoon, working them up the sides to form a deep case. Smooth until even, then chill.

2 Heat oven to 160°C/140°C fan/gas 3. Put the cheese, coconut cream and condensed milk in a large bowl and combine. Gradually add the lime juice, then the eggs. Pour into the biscuit base. Bake for 50-60 mins until lightly set with a wobbly centre.

3 Remove tin to a wire rack and cool completely, then chill. To serve, bring back to room temperature before removing from the tin.

4 For the caramel, put the sugar in a heavy-based frying pan and heat very gently until dissolved - every now and then lightly stir with a fork. Turn the heat up and bubble to a rich golden-red, then remove from the heat quickly and add the butter and rum very carefully. Stir to combine, putting the pan back on the heat if the caramel hardens. Once smooth, stir through the cream and salt.

5 Put the caramel in a heatproof bowl, cover with a piece of cling film touching the surface, then cool for 30 mins. Mix in the fruit pulp, then drizzle over the cheesecake. Leave a jug of the caramel on table for guests to serve themselves.

COOK'S TIP

*Without the caramel,
this dessert will keep
chilled for 6 hours
or, wrapped in cling
film, frozen for up
to a month*



FOR MORE INSPIRATION
These recipes have been created and fully
tested by the experts at delicious. magazine.
For more festive food ideas, check out the
December 2016 issue of delicious.
deliciousmagazine.co.uk

delicious.
MAGAZINE

آموزشگاه انعکاس منبع جدیدترین اطلاعات، مقالات و دوره‌های آموزشی دکوراسیون داخلی

 Enekas.Academy

 Enekas.Academy

STOCKIST DIRECTORY

Find out where to buy everything in this issue

A **Alexander & Pearl** 020 8508 0411; alexanderandpearl.co.uk
Amara 0800 587 7645; amara.com
Amazon amazon.co.uk
Annie Sloan 01865 713089; anniesloan.com
APE Architecture & Design 020 7401 3229; ape-ad.co.uk
Apple 0800 048 0408; apple.com/uk/
Argos 0345 640 3030; argos.co.uk
Arlo & Jacob 0333 122 5409; arloandjacob.com
Artisanti 0345 259 1410; artisanti.com
Astro Lighting 01279 427001; astrolighting.com
Atno67 01225 938059; atnumber67.co.uk

B **The Baked Tile Company** 02920 358409; bakedtiles.co.uk
B&Q 0333 014 3098; diy.com
Barker & Stonehouse 0330 311 4211; barkerandstonehouse.co.uk
Barneby Gates 01672 560240; barnebygates.com
Bathrooms.com 01525 300830
Bathstore bathstore.com
Bean Bag Bazaar 0800 988 1286; beanbagbazaar.co.uk
Bedeck 0333 200 7331; bedeckhome.com
Bedmonkey 01924 469993; bedmonkey.com
Bell & Blue 01455 558677; bellandblue.com
Berry Red 01432 265094; berryred.co.uk
The Blue Goose 01206 213319; thebluegoose.co.uk
Bohzaar 01531 553000; bohzaar.co.uk
Bosch 0344 892 8979; bosch-home.co.uk
Boyden Tiles 020 8683 6000; boydentiles.co.uk
Brissi 01225 319058; brissi.com
Bronte by Moon brontebymoon.co.uk
Brynmor Interiors 01582 766563
Burlington Bathrooms 01322 473222; burlingtonbathrooms.com
Butterfields Building & Timber Supplies 01528 491100; hbutterfield.co.uk

C **Camerich** 020 7372 9887; camerich.co.uk
Campus Gifts 01494 790424; campusgifts.co.uk
Candle & Cake 01508 489361; candleandcake.co.uk
Candy 0151 334 2781; candy-domestic.co.uk
Caroline Love Interiors 01420 561950; carolineloveinteriors.co.uk
Carpentryright 0330 333 3444; carpentryright.co.uk
Cass Art 020 7619 2601; cassart.co.uk
Cast Iron Radiator Centre 0800 294 8603; castironradiatorcentre.co.uk
The Chandelier & Mirror Company 01322 476465; chandeliersandmirrors.co.uk
Christy 0845 758 5252; christy.co.uk
Cloudberry Living 0330 123 3301; cloudberryliving.co.uk
The Contemporary Home 0845 130 8229; tch.net
Content by Terence Conran 020 8150 8380; contentbyterenceconran.com
Contura contura.eu
Cox & Cox 0330 333 2123; coxandcox.co.uk
CP Hart 0845 873 1121; cphart.co.uk
Craftasmic 01823 423894; craftasmic.co.uk
Craven Dunnill 01746 761611; cravendunnill.co.uk
Creative Tops 01536 207710; creative-tops.com
Crown 0300 024 0281; crownpaints.co.uk
Crown French Furniture crownfrenchfurniture.co.uk



Cuckooland 01305 231231; cuckooland.com
Cult Furniture 020 8185 6960; cultfurniture.com
Currys 0344 561 0000; currys.co.uk

D **Där Lighting** 01295 672200; darlighting.co.uk
De Novo Kitchens 01244 398505; denovokitchens.co.uk
Decowall decowall.co.uk
Dee Jay Carpentry 01582 760721
Denby 01773 740899; denby.co.uk
Dennis Tod Interiors 01376 528562; dennistodinteriors.co.uk
Dobbies dobbies.com
Domani 0191 296 4929; domanibathrooms.co.uk
Dotcomgiftshop 020 8746 2473; dotcomgiftshop.com
Drift Linens driftlinens.com
Dulux 0333 222 7171; dulux.co.uk
Dunelm 0345 165 6565; dunelm.com
Dwell 0345 675 9090; dwell.co.uk

E **eBay** ebay.co.uk
Electrolux 0344 561 3613; electrolux.co.uk
Emily Readett-Bayley emilyreadettbayley.com
Encore Reclamation 020 7001 7605; encorereclamation.co.uk
The English Panelling Company 01453 731305; theenglishpanellingcompany.co.uk
Ercol 01844 271800; ercol.com
Etsy etsy.com
Exclusive Interiors 01709 477700; exclusiveinteriors.co.uk
Extex 01634 718871; extex.co.uk

F **Farrow & Ball** 01202 876141; farrow-ball.com
The Farthing 0844 567 2400; thefarthing.co.uk
Finenordic finenordic.co.uk
Fired Earth 0845 366 0400; firedearth.com
Flying Tiger Copenhagen uk.flyingtiger.com/en-GB
Four Elms Nursery 01732 700121
Furnish.co.uk 0345 544 4044
Furniture Choice 0800 035 0070; furniturechoice.co.uk
Furniture Village 0800 804 8879; furniturevillage.co.uk

G **Galerie** 01892 700730; galeriehome.co.uk
Gant 0800 011 9097; gant.co.uk
Garden Trading 01993 845559; gardentrading.co.uk
George Home 0800 952 3003; direct.asda.com
Ginger Ray 0845 680 2975; gingerray.co.uk
Gorenje 020 8247 3980; gorenje.co.uk
Graham & Brown 0800 328 8452; grahambrown.com
Graham and Green 01225 418200; grahamandgreen.co.uk
Graham Willis Interiors 07961 422753
Grange grange.fr
Great Little Trading Company 0344 848 6000; gltc.co.uk

H **H&M Home** 0344 736 9000; hm.com
Habitat 0344 499 1111; habitat.co.uk
Haier 0333 003 8122; haier.com
Harlequin 0845 123 6815; harlequin.uk.com
Harry Cory Wright 020 7823 5540; elevenfineart.com

Harveys 0344 847 2626; harveysfurniture.co.uk
Heal's 0333 212 1915; heals.com
Hobbycraft 0330 026 1400; hobbycraft.co.uk
Holly's House 020 7736 2222; hollys-house.com
Homebase 0345 077 8888; homebase.co.uk
Homesense 01923 473561; homesense.com
Horsfall & Wright 0773 301 8762; horsfallandwright.co.uk
Hotpoint 0344 822 4224; hotpoint.co.uk
House Doctor en.housedoctor.dk
House of Fraser 0345 602 1073; houseoffraser.co.uk
Houseology 0141 280 2047; houseology.com

Ian Mankin ianmankin.co.uk
Ideal Home Show Shop 020 3225 5338; idealhomeshowshop.co.uk
Ikea 020 3645 0000; ikea.com
Ilovewallpaper 01429 869980; ilovewallpaper.co.uk
Indesit 0800 092 1922; indesit.co.uk
Indigenous 01993 824200; indigenous.co.uk
Inspired Wallpaper 01254 222801; inspiredwallpaper.com
The Iron Bed Company 01328 855190; theironbed.company

JD Williams 0871 231 2000; jdwilliams.co.uk
Jo Malone 0800 054 2411; jomalone.co.uk
John Lewis 0345 604 9049; johnlewis.com
Johnson Tiles 01782 524000; johnson-tiles.com
Just Fabrics 0845 498 9043; justfabrics.co.uk
Just Taps Plus 01895 442211; justtapsplus.co.uk

KL Kandola 01902 421361; kandola.co.uk
Kutchenhaus kutchenhaus.co.uk
La Maison Chic 0800 133 7828; la-maison-chic.co.uk
La Redoute 0844 842 2222; laredoute.co.uk
Lakeland 01539 488100; lakeland.co.uk
Laura Ashley 0333 200 8009; lauraashley.com
Leisure leisurecooker.co.uk
Lexington lexingtoncompany.com
LG 0344 847 5454; lg.com
The Linen Works 020 3744 1020; thelinenworks.co.uk
Linum linumdesign.com
Lisa Angel 0800 193 5472; lisaangel.co.uk
Live Laugh Love 01342 842599; livelaughlove.co.uk
Living It Up 0116 269 5960; livingitup.co.uk
Loaf 0845 468 0698; loaf.com
The London Tile Co 0333 320 8048; londontile.co.uk
The Lounge Co 01225 792333; theloungeco.com
Love Lights 01642 671725; lovelights.co.uk
Ludlow Stoves 01584 878552; ludlowstoves.co.uk



M M W Forsyth Fireplaces 01582 767344
Made In Design 020 7692 4001; madeindesign.co.uk
Made.com 0344 257 1888
Maisons du Monde 0808 234 2172; maisonsdumonde.com
Mandarin Stone 01600 715444; mandarinstone.com
Marks & Spencer 0333 014 8555; marksandspencer.com
Matalan 0333 004 4444; matalan.co.uk
Melody Maison 01302 741000; melodymaison.co.uk
The Merchant House 01244 529429; merchanthousehold.co.uk
Meri Meri 01242 575868; shopmerimeri.co.uk
Miele 0330 160 6600; miele.co.uk
The Millshop 01604 875062; the-millshop-online.co.uk
MT masking-tape.jp/en/

N Naturehome naturehome.com
Neptune 01793 427450; neptune.com
Newgate Clocks 01691 679994; newgateclocks.com
Newtons Furniture 01626 333006; newtonsfurniture.co.uk
Next Home 0333 777 8000; next.co.uk
Nickel & Goose nickelandgoose.com
Nkuku 0333 240 0155; nkuku.com
Nordic House 01872 223220; nordichouse.co.uk
Nordpeis nordpeis.co.uk
Not-Another-Bill 020 7731 7877; notanotherbill.com
Notonthehighstreet.com 020 3318 5115
Nunido nunido.co.uk

O Oka 0844 815 7380; oka.com
Oliver Bonas 020 8974 0110; oliverbonas.com
Oliver Peake 020 8558 7335; oliverpeake.co.uk
Once Ridden 07545 609948; onceridden.com
Origin 0808 168 5816; origin-global.com
Original BTC 020 7351 2130; uk.originalbtc.com
Original Style 01392 473000; originalstyle.com
Osborne & Little osborneandlittle.com
Outside In Construction 07961 271776; outsideinconstruction.co.uk

P Paper Moon 020 7458 4548; papermoon.co.uk
Paperchase 020 3322 4788; paperchase.co.uk
Papermash 07970 945477; papermash.co.uk
Parlane International 01451 812700; parlaineinternational.co.uk
Party Packs 01749 872080; partypacks.co.uk
Philly Rutt 07515 378356; phillyrutt.com
Pia 0844 499 5670; pijawellery.com
Postbox Party 01604 505245; postboxparty.com
Powerbee 01580 881345; powerbee.co.uk
Pretty Maison 01353 665141; prettymaison.co.uk
Primark primark.com
Primrose & Plum 01372 750648; primroseandplum.co.uk

QR Quill 020 7833 8562; quilllondon.com
RE 01434 634567; re-foundobjects.com
Red Candy 0121 224 7728; redcandy.co.uk
Red Rainbow 01733 742015; redrainbowcushions.co.uk
Reed Harris 020 7751 8500; reedharris.co.uk
Rigby & Mac 020 8761 1011; rigbyandmac.com
Roca uk.roca.com
Ross & Brown 0345 600 3315; rossandbrownhome.co.uk
Rossett Tiles 01244 383377; rossett-tilesinchester.co.uk
The Rug Seller 0161 876 4566; therugseller.co.uk
Rume 01273 777810; rume.co.uk

S Sainsbury's 0800 636262; sainsburys.co.uk
Sainsbury's Home 0800 636262; sainsburyshome.co.uk
Samsung 0330 726 7864; samsung.com
Sandberg Wallpaper sandbergwallpaper.com
Sass & Belle 020 7346 0117; sassandbelle.co.uk
Screwfix 0333 011 2112; screwfix.com
Secret Linen Store 01243 822599; secretlinenstore.com
Sheridan 0845 618 2800; sheridan-uk.com
Siemens 0344 892 8999; siemens-home.com
Sisters Guild sistersguild.co.uk
Skagerak skagerak.dk
Sleepy People 0330 332 2575; sleepyypeople.com
Sofa Workshop 0808 252 7759; sofaworkshop.com
Sofa.com 0345 400 2222
Sofasworld 0344 482 7553; sofasworld.co.uk
Sophie Allport 01778 560256; sophieallport.com
Spode 01782 743427; spode.co.uk
Spoonflower spoonflower.com
St Eval Candle Company 01841 540850; stevalcandlecompany.co.uk
Stanley 01978 290865; waterfordstanley.com
Sue Murphy Interiors suemurphyinteriors.co.uk
Sweetpea & Willow 0345 257 2627; sweetpeaandwillow.com
Swoon Editions 020 3137 2464; swooneditions.com

T Talking Tables 020 7627 6767; talkingtables.co.uk
Tangletree Interiors 0800 917 8726; tangletree-interiors.co.uk
Tesco 0800 505555; tesco.com
Tile Giant 01782 597777; tilegiant.co.uk
Tile Mountain 01782 223822; tilemountain.co.uk
Tiles etc 020 7607 2700; tilesetc.com
Topps Tiles 0800 783 6262; toppstiles.co.uk
Tori Murphy 0115 960 8472; torimurphy.com
Tower Ceramics 020 7485 7192; towerceramics.co.uk
Twentytwentyone 020 7288 1996; twentytwentyone.com

UV Umbra umbra.com
Urban Outfitters urbanoutfitters.com
Utopia Bathrooms 01902 406402; utopiagroup.com
Very 0844 822 2321; very.co.uk
Viaduct 020 7278 8456; viaduct.co.uk
Victoriaplum.com 0344 804 4848
Ville & Campagne villeetcampagne.co.uk
Vincent & Barn 0118 328 7088; vincentandbarn.co.uk

W Waitrose 0800 188884; waitrose.com
Waitrose Garden 01344 578811; waitrosegarden.com
Wallpaperdirect 01323 430886; wallpaperdirect.com
Walls and Floors 01536 314730; wallsandfloors.co.uk
Warren Evans 020 7693 8988; warrenevans.com
Wayfair 0800 169 0423; wayfair.co.uk
Whirlpool 0344 815 8989; whirlpool.co.uk
The White Company 020 3758 9222; thewhitecompany.com
The White Lighthouse 02890 480200; thewhitelighthousefurniture.co.uk
Wickes 0330 123 4123; wickes.co.uk
Wild & Wolf 01225 789919; wildandwolf.com
Wilko 0800 032 9329; wilko.com
Willow & Hall 0845 468 0577; willowandhall.co.uk
Within Home 020 3455 7733; withinhome.com
The Works 0121 313 6050; theworks.co.uk
Wyevalle 0344 272 3000; wyevallegardencentres.co.uk

Z Zanussi 0344 561 2612; zanussi.co.uk
Zara Home 0800 026 0091; zarahome.com
Zazzle zazzle.co.uk
Zeyko 020 7224 4525; zeyko.co.uk

Finishing touches

PERFECT PRESENTS

Break with familiarity this year and give your gifts an eclectic update with elegant silver and gold, fun designs in traditional red and white or classic kraft paper emblazoned with seasonal messages of joy. Complete the look with simple tags handmade from vintage Christmas cards or brown card stamped with festive slogans. Finish with gorgeous ribbons tied into bows.

GET THE LOOK

For a selection of brown paper and gift boxes, try Paperchase. For ribbon and trim, try Etsy. For a range of Christmas gift wrap, try Cox & Cox, John Lewis, Sainsbury's and Tesco. For similar craft stamps, try Hobbycraft or Papermash



PHOTOGRAPHS JOANNA HENDERSON

STOCKISTS
Turn to
p172

Pure Freude
an Wasser

GROHE



UNBOTTLED WATER

STILL, MEDIUM OR SPARKLING



REFRESH WITH **GROHE BLUE HOME**

A beautiful and intelligent system that transforms simple water into pure thirst-quenching pleasure. How do you like your water? Still, medium or sparkling, it's all a matter of taste. GROHE Blue Home has a simple and intuitive mechanism that lets you carbonate your drinking water with the touch of a button. Delicious, bubbly filtered water.

آموزشگاه انعکاس منبع جدیدترین اطلاعات، مقالات و دوره‌های آموزشی دکوراسیون داخلی

 Enekas.Academy

 Enekas.Academy



COLOUR ME GREY

PERFECT FIT® BLINDS BY LOUVOLITE



ASPIRATIONAL WINDOW SHADING

NEW PERFECT FIT® ANTHRACITE GREY FOR UPVC WINDOW & DOOR FRAMES

 LOUVOLITE

آموزشگاه انعکاس منبع جدیدترین اطلاعات، مقالات و دوره‌های آموزشی دکوراسیون داخلی

 Enekas.Academy

 Enekas.Academy

